

4

3

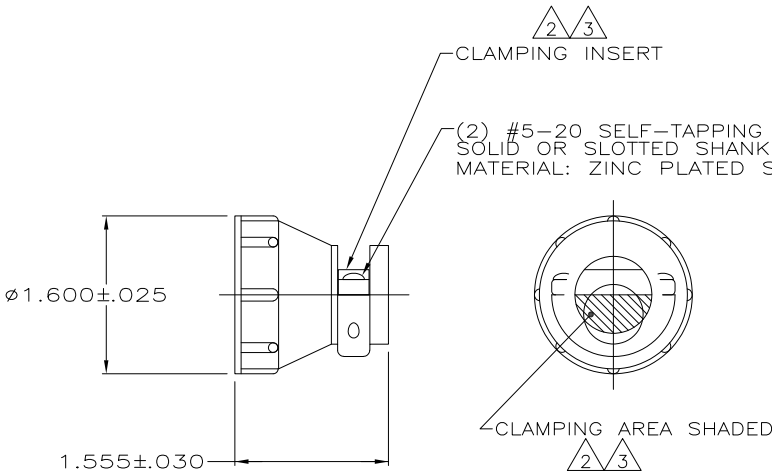
2

1

THIS DRAWING IS UNPUBLISHED. RELEASED FOR PUBLICATION
 © COPYRIGHT - By - ALL RIGHTS RESERVED.

LOC	DIST	REVISIONS			
P	LTR	DESCRIPTION	DATE	DWN	APVD
FT	0	S4	REVISED PER ECO-11-004587	11MAR11	RK HMR

- 1 PARTS PACKAGED UNASSEMBLED.
- 2 CABLE CLAMPING AREA ADJUSTABLE FROM .100 TO .410 SQ IN BY REVERSING CLAMPING INSERTS. (2 INSERTS SUPPLIED)
- 3 CABLE CLAMPING AREA ADJUSTABLE FROM .100 TO .410 SQ IN BY CHANGING CLAMPING INSERTS. (4 INSERTS SUPPLIED, -3 ONLY)
- 4 .703 MAXIMUM CABLE OUTSIDE DIAMETER.
- 5 BULK PACKAGED KITS TO BE ORDERED IN MULTIPLES OF 100 ONLY.
- 6 SCREW FINISH ZINC WITH NON-HEXAVALENT CHROMATE.
- 7 OBSOLETE PARTS: OBSOLETE CIS STREAMLINING PER D.RENAUD/D.SINISI



QTY	DESCRIPTION	UNIT	PART NUMBER
2	.75±.00 / .62±.05	INDIVIDUAL	1-206138-2
2	.75±.00 / .62±.05	INDIVIDUAL	1-206138-1
2	.62±.00	5 BULK	1-206138-0
2	.62±.00	7 OBSOLETE SMALL PACK	-206138-9
2	.62±.00	7 INDIVIDUAL	206138-8
2	SUPERSEDED BY 1-206138-1	7 INDIVIDUAL	-206138-7
2	7 OBSOLETE	7 SMALL PACK	-206138-6
2	7 OBSOLETE	5 BULK	206138-3
2	SUPERSEDED BY 1-206138-0	5 BULK	206138-2
2	SUPERSEDED BY 206138-8	7 INDIVIDUAL	206138-1
	SCREW LENGTH	PACKAGING	PART NUMBER

THIS DRAWING IS A CONTROLLED DOCUMENT.

DIMENSIONS: INCHES	TOLERANCES UNLESS OTHERWISE SPECIFIED:	DWN: A GRAFF 4/23/91	TE Connectivity
0 PLC ± -	1 PLC ± -	CHK: W.G.LENKER 7-22-92	
2 PLC ± -	3 PLC ± -	APVD: -	NAME: CABLE CLAMP KIT, STANDARD, SHELL SIZE 23, CPC
4 PLC ± -	ANGLES ± -	PRODUCT SPEC: 108-10024	RESTRICTED TO: -
MATERIAL: THERMOPLASTIC	FINISH: -	APPLICATION SPEC: -	SIZE: A3 CAGE CODE: 00779 DRAWING NO: C-206138
		WEIGHT: -	CUSTOMER DRAWING
			SCALE: NTS SHEET: 1 OF 1 REV: S4