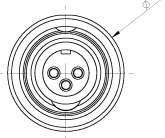
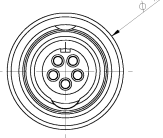


MALE PLUG SIDE  
BUCHSENSEITE

3 WAY  
3 POLIG

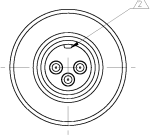


5 WAY  
5 POLIG

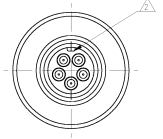


FEMALE PLUG SIDE  
STIFTSEITE

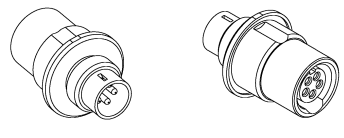
3 WAY  
3 POLIG



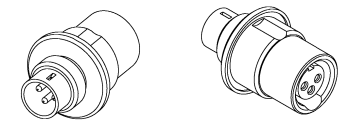
5 WAY  
5 POLIG



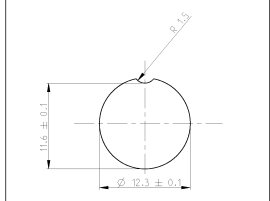
5 WAY / 5 POLIG



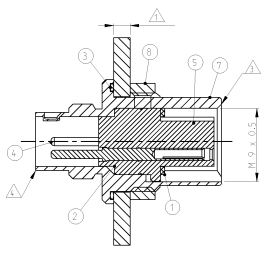
3 WAY / 3 POLIG



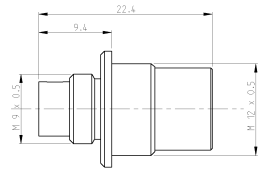
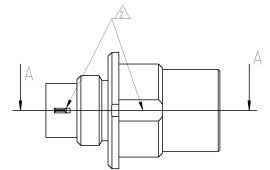
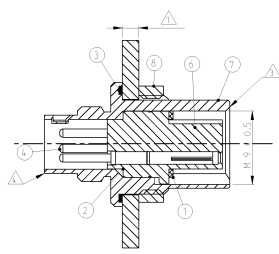
MOUNTING HOLE DIMENSION  
LOCHBILD FUER MONTAGE



SECTION A-A



SECTION A-A



PIN-SIDE / STIFTSEITE	▲
SOCKET-SIDE / BUCHSENSEITE	▲
COATING / KODIERUNG	▲
PANEL THICKNESS / PANELDICKER: MAX. 2.5 mm	▲
MATERIAL / MATERIAL: PBT-UL-94 V0	
SHELL MATERIAL / GEHÄUSEMATERIAL: CUZIN	
PLATING / BESCHÜTTUNG: TRIBOR 4 μm	
CONTACT RESISTANCE / KONTAKTWIDERSTAND: $\pm 5 m\Omega$	
RATED CURRENT PER CONTACT / NENNSTROM PRO KONTAKT: 3 A	
SHELL PROTECTION CLASS / SCHUTZKLASSE: IP 65 / DIN 40050	
TEST VOLTAGE / PRÜFSPANNUNG: 500 VAC	
OPERATING VOLTAGE / BETRIEBSSPANNUNG: 60 VAC	
OPERATING TEMPERATURE: -40°C TO +80°C /	
ARBEITSTEMPERATUR: -40°C BIS +80°C	
MATING CYCLES / STECKZYKLEN: 500 MAX.	
TECHNICAL DATA TECHNISCHE DATEN	

TYCO-NO. / TYCO NR.			
1-1437720-41-1437720-3			
1	1	NUT / MUTTER	8
1	1	SCREWING TUBE / GEWINDEHULSE	7
1	1	CONTACT CARRIER 5 WAY / KONTAKTTÄGER 5 POLIG	6
1	1	CONTACT CARRIER 3 WAY / KONTAKTTÄGER 3 POLIG	5
5	3	CONTACT / KONTAKT	4
1	1	SEAL / DICHTUNG	3
1	1	SEAL / DICHTUNG	2
1	1	SEAL / DICHTUNG	1
-	-	REVISION OF EACH ASSY NO. (WHEN BLANK, USE DWG REV.)	
QTY REQD PER ASSY	DESCRIPTION /		ITEM-NO.
	BESCHREIBUNG /		TEIL-NR.
	PARTS LIST /		
	TEILE LISTE		
CATALOG-NO.	CATALOG-NO.		
T01-0590-P030	T01-0590-P030		

TYCO-NO. / TYCO NR.	1-1437720-41-1437720-3	REVISIONS	REV. 1	DATE	14/01/01
DESCRIPTION	T01 GENDER CHANGER PANEL MOUNT 3, 5 POS., T01 ADAPTER BUCHSE-STIFT 3, 5 POL.	DESIGNED BY	DESIGNED BY	DATE	14/01/01
DATE	14/01/01	CHECKED BY	CHECKED BY	DATE	14/01/01
DRAWN BY	DRAWN BY	APPROVED BY	APPROVED BY	DATE	14/01/01
DATE	14/01/01	DATE	14/01/01	DATE	14/01/01