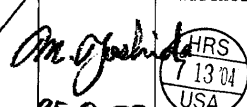



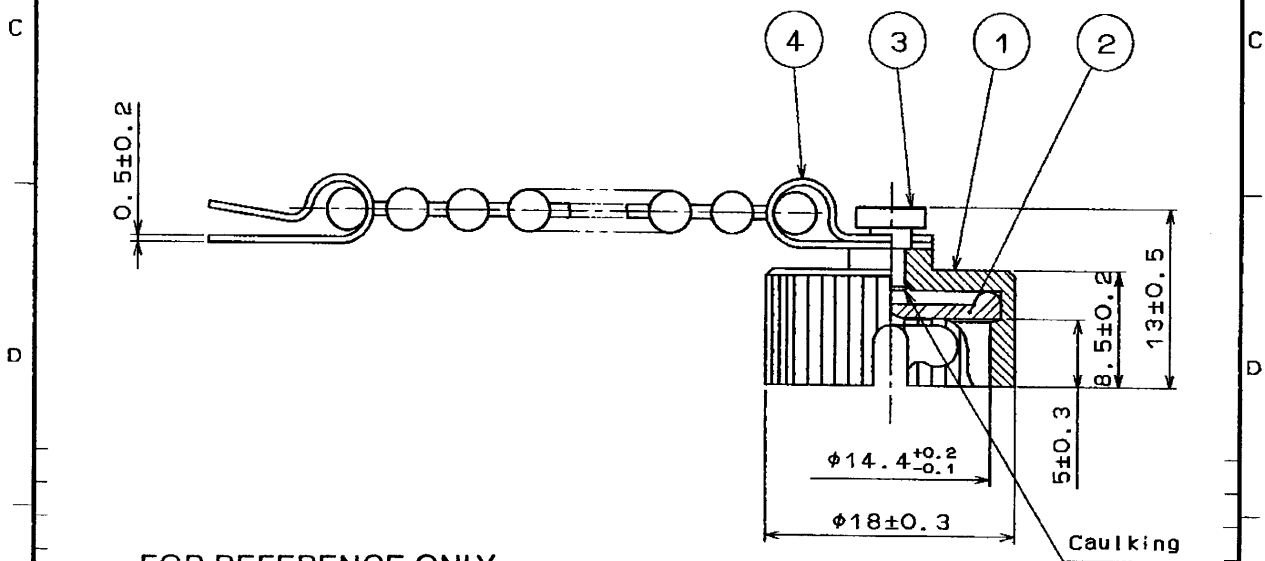
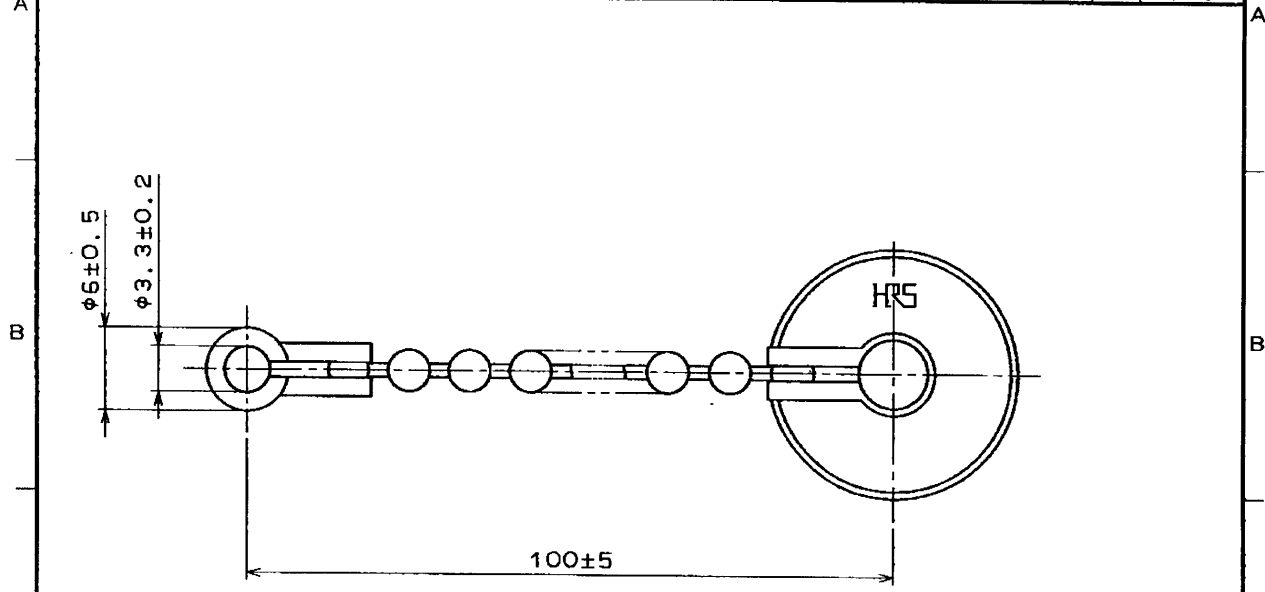
COUNT	DESCRIPTION OF REVISIONS	BY	CHKD	DATE	COUNT	DESCRIPTION OF REVISIONS	BY	CHKD	DATE
△				..	△				..
△				..	△				..
APPLICABLE STANDARD									
RATING	OPERATING TEMPERATURE RANGE	-25 °C TO +85 °C			STORAGE TEMPERATURE RANGE	0 °C TO +60 °C			
	APPLICABLE CABLE								
<b>S P E C I F I C A T I O N S</b>									
ITEM	TEST METHOD				REQUIREMENTS				QT/AT
CONSTRUCTION									
GENERAL EXAMINATION	VISUALLY AND BY MEASURING INSTRUMENT.				ACCORDING TO DRAWING.				○ ○
MARKING	CONFIRMED VISUALLY.								○ ○
ELECTRICAL CHARACTERISTICS									
CORROSION SALT MIST	EXPOSED IN 5 % SALT WATER SPRAY FOR 48 h				NO HEAVY CORROSION				○ -
SEALING	EXPOSED AT A DEPTH OF 0.5 m FOR 48 h.				NO WATER PENETRATION INSIDE CONNECTOR.				○ -
AIRTIGHTNESS	APPLY AIR PRESSURE 5 KPa FOR 30 sec TO INSIDE CONNECTOR.				NO AIR BUBBLES INSIDE CONNECTOR.				○ -
<p>FOR REFERENCE ONLY Subject to change without notice</p>									
REMARKS					DRAWN	DESIGNED	CHECKED	APPROVED	RELEASED
NOTE: ROOM TEMPERATURE. Unless otherwise specified, refer to JIS C 5402.					H. Kishi	H. Kishi			
					95.8.22	95.8.22			
Note QT: Qualification Test AT: Assurance Test ○: Applicable Test									
<b>HRS</b> HIROSE ELECTRIC CO., LTD.				<b>SPECIFICATION SHEET</b>			PART NO. RM 12 WBR-C		
CODE NO. (OLD)		DRAWING NO.			CODE NO.				
CL		ELC4-008682			CL 109-1054-0			1/1	

TO
R

FORM NO. 231-1



1					2					3					4				
COUNT	DESCRIPTION OF REVISIONS				BY	CHKD	DATE	COUNT	DESCRIPTION OF REVISIONS				BY	CHKD	DATE				
△							..	△							..				
△							..	△							..				
△							..	△							..				



FOR REFERENCE ONLY  
Subject to change without notice

2	SYNTHETIC RUBBER	(BLACK)	4	BRASS	NICKEL PLATING
1	BRASS	NICKEL PLATING	3	BRASS	NICKEL PLATING
NO.	MATERIAL	FINISH . REMARKS	NO.	MATERIAL	FINISH . REMARKS

CODE NO. (OLD)		DRAWN	DESIGNED	CHECKED	APPROVED	RELEASED
		H. Kishi	H. Kishi		<i>M. Yoshida</i>	
		95.8.22	95.8.22		95.8.23	

TO  
R

 SCALE 2 : 1 UNITS m.m	DRAWING NO. EDC4-008682	PART NO. RM12WBR-C
	 HIROSE ELECTRIC CO., LTD.	CODE NO. CL109-1054-0