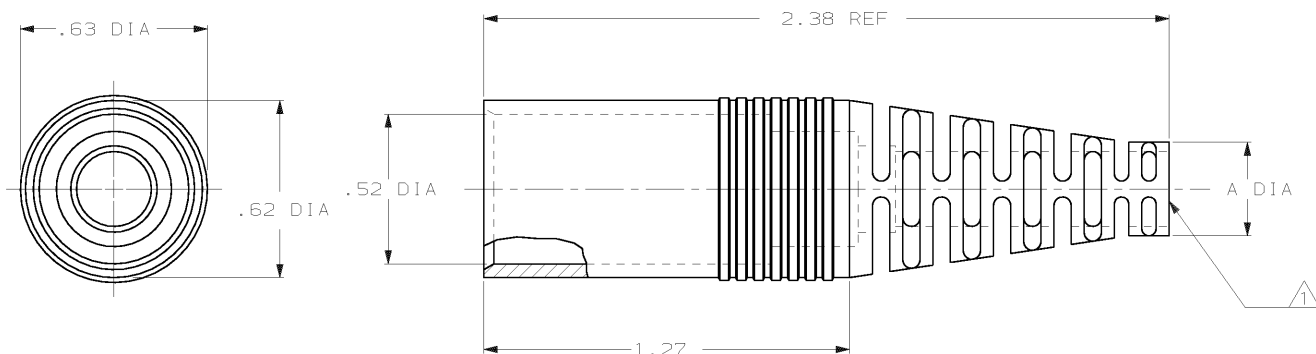


DRAWING MADE IN THIRD ANGLE PROJECTION

THIS DRAWING IS UNPUBLISHED. RELEASED FOR PUBLICATION
 © COPYRIGHT 19 BY AMP INCORPORATED, HARRISBURG, PA. ALL INTERNATIONAL RIGHTS RESERVED. AMP PRODUCTS MAY BE COVERED BY U.S. AND FOREIGN PATENTS AND/OR PATENTS PENDING.

LOC	DIST	P	F	ZONE	LTR	DESCRIPTION	DATE	APPROVED
GP	00							
					C	REVISED & REDRAWN AF-2227	10-2-86	JRGY
					D	REVISED PER AF-3539	3/2/87	δ ^o GY
					E	REV PER AF-4722	5/12/87	δ ^o GY
					F	REV PER AF-4684	6/30/87	DH
					G	OBSOLETE -2 ECN BD6064	04/01/92	BF
					H	OBS -3 PER EC 0020-1416-94	11/28/94	AT
					J	REACTIVATED -3 PER EC 0020-142-95	02/14/95	GS
					K	REV PER EC 0320-90-96	23 OCT 96	GS
					L	REV PER EC 0513-0403-04	21 MAR 05	JR



	.37	GRAY	△	212800-4
OBSOLETE	.37	BLACK	△	212800-3
OBSOLETE	.31	GRAY	△	212800-2
	.31	BLACK	△	212800-1

- △ INSIDE DIA TO ACCEPT .190/.250 DIA CABLE.
- △ INSIDE DIA TO ACCEPT .250/.300 DIA CABLE.
- 3 USED WITH ONE PIECE SHIELDED DIN PLUG CONNECTORS.

		A DIA	COLOR	PART NO
UNLESS OTHERWISE SPECIFIED DIMENSIONS ARE IN INCHES TOLERANCES ON:		DR 10-02-86	AMP INCORPORATED Harrisburg, Pa. 17105	
2 PL DEC ± .02		L.R. RUTH	NAME CIRCULAR DIN, CORD GUARD	
3 PL DEC ± -		CHK 10-02-86		
ANGLES ± -		G. YETTER	SIZE B	FSCM NO 00779
MATERIAL	POLYETHER-ESTER ELASTOMER	APPD 10-02-86	DRAWING NO 212800	
FINISH	-	N. VISELLI	SCALE NTS	SHEET 1 OF 1
		C. ROWE		
		PRODUCT SPEC		
		APPLICATION SPEC		
		WEIGHT		

AMP 1470-15 REV 10-84
 23-OCT-96 07:20:14 amp34723 /home/ssrv026d/dsk04/dept4023/amp34723/edmod

CUSTOMER DRAWING