

4

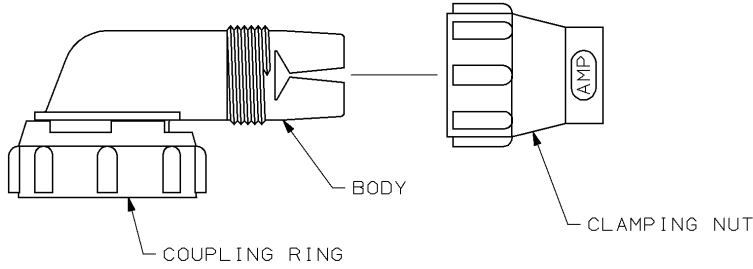
3

2

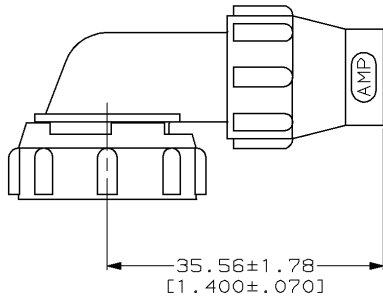
1

THIS DRAWING IS UNPUBLISHED. RELEASED FOR PUBLICATION  
 © COPYRIGHT 19 BY AMP INCORPORATED. ALL RIGHTS RESERVED.

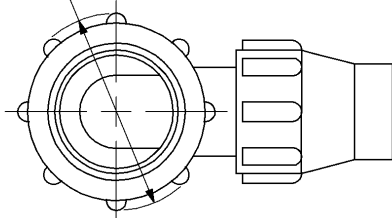
Loc	Dist	REVISIONS			
P	LTR	DESCRIPTION	DATE	DWN	APVD
0		RLSE PER NPR 5708 WAS 98-4998-4	22 SEP 98	-	-



- 1. COUPLING RING, BODY AND CLAMPING NUT POLYESTER, BLACK.
- 2. MAX OUTSIDE CABLE DIAMETER 9.14 [.360].
- 3. CLAMPING RANGE DIA 9.14 - 8.20 [.360 - .323].



∅26.04 MAX  
[1.025]



ASSEMBLED

213982-1

PART NUMBER

THIS DRAWING IS A CONTROLLED DOCUMENT.

DIMENSIONS:	TOLERANCES UNLESS OTHERWISE SPECIFIED:
mm (INCHES)	
0 PLC	±-
1 PLC	±-
2 PLC	±-
3 PLC	±-
4 PLC	±-
ANGLES	±-
MATERIAL	FINISH



DWN	C. OBERMAN	22 SEP 98
CHK	K. DOWHOWER	23 SEP 98
APVD	K. DOWHOWER	23 SEP 98
NAME		
PRODUCT SPEC		
APPLICATION SPEC		
WEIGHT		
CUSTOMER DRAWING		

**AMP**

AMP Incorporated  
Harrisburg, PA 17105-3608

KIT, STRAIN RELIEF, RIGHT ANGLE,  
UNASSEMBLED, SIZE 13, CPC

SIZE	CAGE CODE	DRAWING NO	RESTRICTED TO
A3	00779	213982	-

SCALE 2:1 SHEET 1 OF 1 REV 0

AMP 1470-19 REV 11JUN97

22-SEP-98 14:27:38 amp06568 /home/ssrv026d/dsk04/dep14023/amp06568/edmod