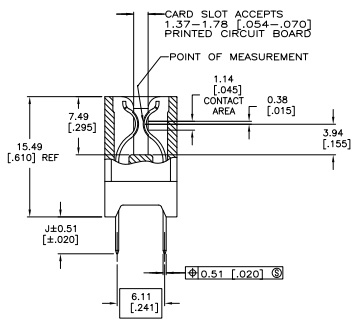
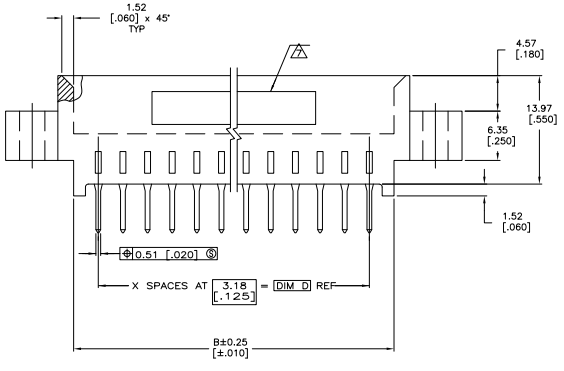
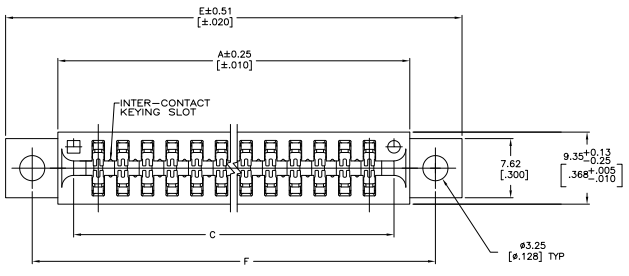


THIS DRAWING IS UNPUBLISHED  
 ALL RIGHTS RESERVED

REV	DATE	DESCRIPTION	BY	CHK	APP
AD	14				
PS		REVISED PER EDD-11-00927			



- △ HOUSING: GLASS FILLED POLYESTER; COLOR: BLACK.
- △ CONTACT: PHOSPHOR BRONZE.
- △ NICKEL UNDERPLATE: 0.00127 [.000050] MIN - ALL OVER.
- △ TIN-LEAD PLATE: 0.00254 [.000100] MIN - SOLDER POSTS.
- △ GOLD PLATE: 0.00076 [.000030] MIN - CONTACT AREA.
- △ NICKEL PLATE PER MIL-G-45204.
- △ GOLD PLATE PER QQ-N-290.
- △ AMP PART NUMBER AND DATE CODE ARE MARKED IN APPROXIMATE AREA SHOWN, EITHER SIDE.
- 8. RECOMMENDED PCB FINISHED HOLE DIA: 1.02±0.08 [.040±.003].
- △ MATTE TIN PLATE: 0.00254 [.000100] MIN - SOLDER POSTS.
- △ OBSOLETE PARTS: OBSOLETE CIS STREAMLINING PER D.RENAUD/D.SINISI

THIS DRAWING IS A CONTROLLED DOCUMENT.		DESIGNED BY: JUV/AVI	DATE: 11/11/11	TE Connectivity	
DRAWN BY: JUV/AVI		CHECKED BY: JUV/AVI	DATE: 11/11/11	CONNECTOR ASSEMBLY, STANDARD EDGE II, 3.18 [.125] CL.	
PART NUMBER: 108-9039		REVISED PER: A1		DRAWING NO: 00779	
CUSTOMER DRAWING		REVISED PER: A1		DRAWING NO: 00779	

THIS DRAWING IS UNPUBLISHED  
 ALL RIGHTS RESERVED

REV	DATE	BY	DESCRIPTION	DATE	BY	APP
AD	14		SEE SHEET 1			

	J	F	E	D	C	B	A	X	NO OF POSN	PART NUMBER
	4.75	102.74	109.35	85.72	92.08	92.08	96.14	27	28	8-531341-0
	[1.62]	[4.045]	[4.305]	[3.375]	[3.625]	[3.625]	[3.785]			
△△△ OBSOLETE	3.18	32.89	39.50	15.88	22.22	22.22	26.29	5	6	6-531341-3
	[1.25]	[1.295]	[1.555]	[.625]	[.875]	[.875]	[1.035]			
OBSOLETE									44	5-531341-5
OBSOLETE									44	5-531341-4
OBSOLETE									60	5-531341-3
OBSOLETE									60	5-531341-2
OBSOLETE									60	5-531341-1
OBSOLETE									60	5-531341-0
OBSOLETE									31	4-531341-9
OBSOLETE	4.75	172.59	179.20	155.57	161.92	161.92	165.99	49	50	4-531341-8
	[1.62]	[6.795]	[7.055]	[6.125]	[6.375]	[6.375]	[6.535]			
OBSOLETE									43	4-531341-7
OBSOLETE									40	4-531341-6
OBSOLETE									36	4-531341-5
OBSOLETE									35	4-531341-4
OBSOLETE	4.75	109.09	115.95	92.08	98.42	98.42	102.49	29	30	4-531341-3
	[1.62]	[4.295]	[4.555]	[3.625]	[3.875]	[3.875]	[4.035]			
OBSOLETE									28	4-531341-2
OBSOLETE									22	4-531341-1
SUPERSEDED BY 3-531341-0									28	4-531341-2
OBSOLETE									22	4-531341-1

OBSOLETE										22	4-531341-0
OBSOLETE										15	3-531341-9
OBSOLETE										10	3-531341-8
OBSOLETE										8	3-531341-7
OBSOLETE										50	3-531341-6
OBSOLETE										43	3-531341-5
OBSOLETE										40	3-531341-4
OBSOLETE										36	3-531341-3
OBSOLETE										35	3-531341-2
OBSOLETE										30	3-531341-1
△	4.75	102.74	109.35	85.72	92.08	92.08	96.14	27	28	3-531341-0	
	[1.62]	[4.045]	[4.305]	[3.375]	[3.625]	[3.625]	[3.785]				
OBSOLETE										22	2-531341-9
OBSOLETE										18	2-531341-8
OBSOLETE										15	2-531341-7
OBSOLETE										10	2-531341-6
OBSOLETE										8	2-531341-5
OBSOLETE	3.18	172.59	179.20	155.57	161.92	161.92	165.99	49	50	2-531341-4	
	[1.25]	[6.795]	[7.055]	[6.125]	[6.375]	[6.375]	[6.535]				
OBSOLETE										43	2-531341-3
OBSOLETE										40	2-531341-2
OBSOLETE										36	2-531341-1
OBSOLETE										35	2-531341-0
OBSOLETE										30	1-531341-9
OBSOLETE										28	1-531341-8
OBSOLETE										22	1-531341-7
OBSOLETE										18	1-531341-6
OBSOLETE										15	1-531341-5
OBSOLETE										10	1-531341-4
△△△	3.18	32.89	39.50	15.88	22.22	22.22	26.29	5	6	1-531341-3	
	[1.25]	[1.295]	[1.555]	[.625]	[.875]	[.875]	[1.035]				
OBSOLETE										50	1-531341-2
OBSOLETE										43	1-531341-1
OBSOLETE										40	1-531341-0
OBSOLETE										36	531341-9
OBSOLETE										35	531341-8
OBSOLETE	3.18	109.09	115.95	92.08	98.42	98.42	102.49	29	30	531341-7	
	[1.25]	[4.295]	[4.555]	[3.625]	[3.875]	[3.875]	[4.035]				
OBSOLETE										28	531341-6
OBSOLETE										22	531341-5
OBSOLETE										18	531341-4
OBSOLETE										15	531341-3
OBSOLETE										10	531341-2
OBSOLETE										8	531341-1

J	F	E	D	C	B	A	X	NO OF POSN	PART NUMBER

THIS DRAWING IS A CONTROLLED DOCUMENT. IT IS THE PROPERTY OF TE CONNECTIVITY. IT IS TO BE KEPT IN CONFIDENCE AND NOT TO BE REPRODUCED OR TRANSMITTED IN ANY FORM OR BY ANY MEANS, ELECTRONIC OR MECHANICAL, INCLUDING PHOTOCOPYING, RECORDING, OR BY ANY INFORMATION STORAGE AND RETRIEVAL SYSTEM.

**TE Connectivity**

CONNECTOR ASSEMBLY, STANDARD EDGE R, 3.18 [1.25] CL.

108-9039

DATE: 10/27/14

REV: 1

ISSUED BY: [Signature]

APPROVED BY: [Signature]

DATE: 10/27/14

REV: 1

ISSUED BY: [Signature]

APPROVED BY: [Signature]