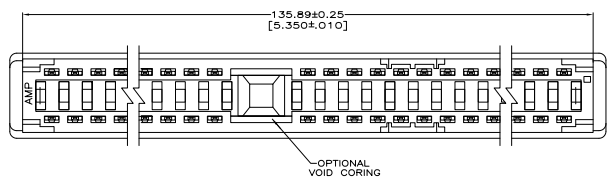
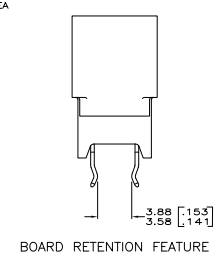
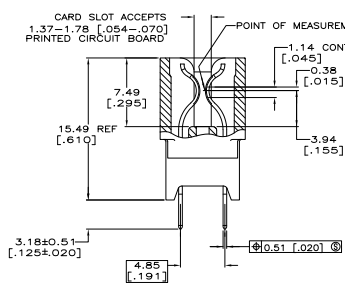
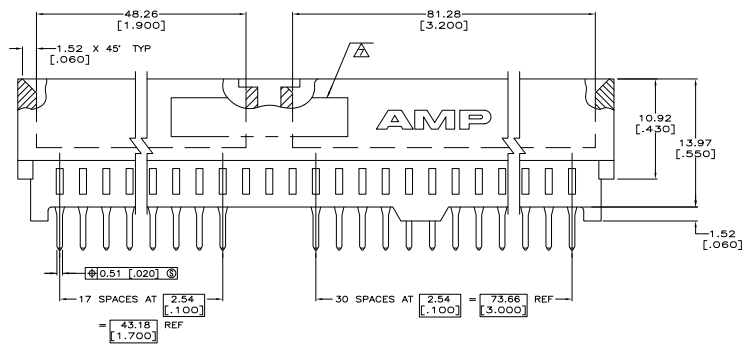
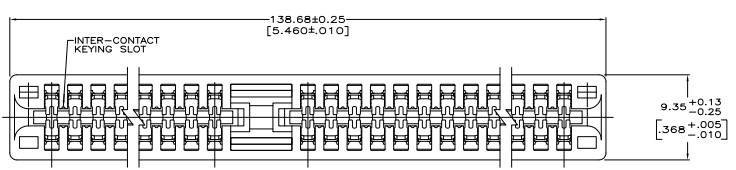


THIS DRAWING IS UNPUBLISHED  
 ALL RIGHTS RESERVED

REV	DATE	DESCRIPTION	BY	CHK	APP
00					
A1		REVISED PER EDD-11-005033			24MMR11 RK HMR

- △ HOUSING: GLASS FILLED POLYESTER; COLOR: BLACK.
- △ CONTACT: PHOSPHOR BRONZE.
- △ NICKEL PLATE: 0.00127 [0.00050] MIN - ALL OVER.
- △ MATTE TIN PLATE: 0.00254 [0.00100] MIN - SOLDER POSTS.
- △ GOLD PLATE: 0.00076 [0.00030] MIN - CONTACT AREA.
- △ NICKEL PLATE PER MIL-G-45204.
- △ GOLD PLATE PER QQ-N-290.
- △ AMP PART NUMBER, DATE CODE AND CSA LOGO ARE MARKED IN APPROXIMATE AREA SHOWN, EITHER SIDE.
- 8. RECOMMENDED PCB FINISHED HOLE DIA: 1.02±0.08 [0.40±0.03].
- 9. THE RETENTIVE FEATURE OF THIS CONNECTOR IS DESIGNED FOR FULL SEATING IN .062±0.008 THICK CIRCUIT BOARDS. FOR APPLICATIONS IN BOARDS OF OTHER THICKNESSES CONTACT AMP INCORPORATED.
- △ 10. PACKAGED 20 CONNECTORS PER TUBE.
- △ 11. PACKAGED 72 CONNECTORS PER EPS TRAY.
- △ 12. GOLD PLATE: 0.00038 [0.00015] MIN - CONTACT AREA.
- △ 13. PACKAGED IN SLIDE PACK.
- △ 14. PACKAGE 57 CONNECTORS IN TUBES.
- △ 15. DATUMS AND BASIC DIMENSIONS TO BE DETERMINED BY CUSTOMER.



NOTE	DESCRIPTION	QTY	PART NUMBER
NOTE 5	NOTE 11	5,6,31,32,41,42,93,94	49 5645169-4
NOTE 5	NOTE 11	-	49 5645169-3
NOTE 5	NOTE 11	5,6,31,32,41,42,93,94	49 5645169-2

PLATING	PACKAGE	BOARD RETENTION LOCATION	NO. OF POSN	PART NUMBER

THIS DRAWING IS A CONTROLLED DOCUMENT. DATE: 14 JUN 93. BY: FRANTUM. DATE: 14 JUN 93.

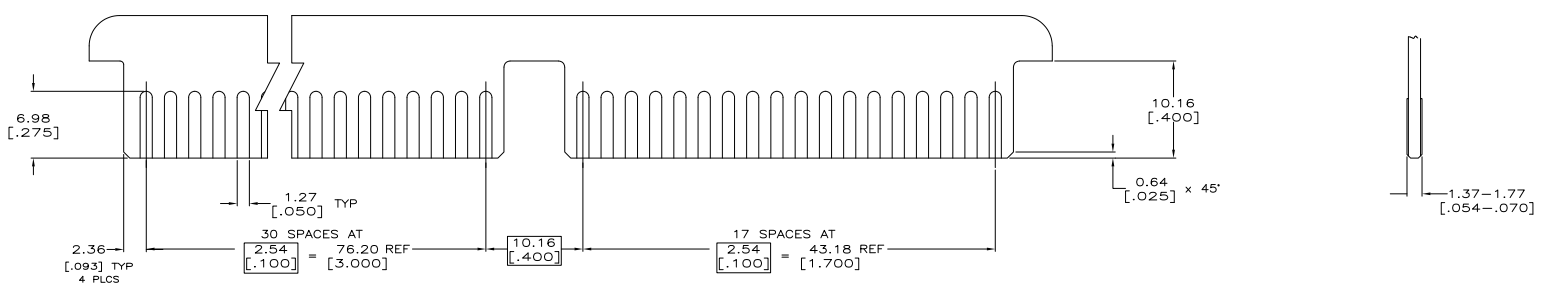
TE Connectivity

CONNECTIONS: DIMENSIONS UNLESS OTHERWISE SPECIFIED: INCHES. PREPARED BY: PROJECT FILE: 108-9039. DATE: 2.14 (1993). OPERATOR: PJC. CHECKED BY: PJC. DATE: 2.2. DRAWING NO: A100779. Q=5645169. REWORKED TO: DATE: 5.1. SHEET: 1 OF 2. BY: A1.

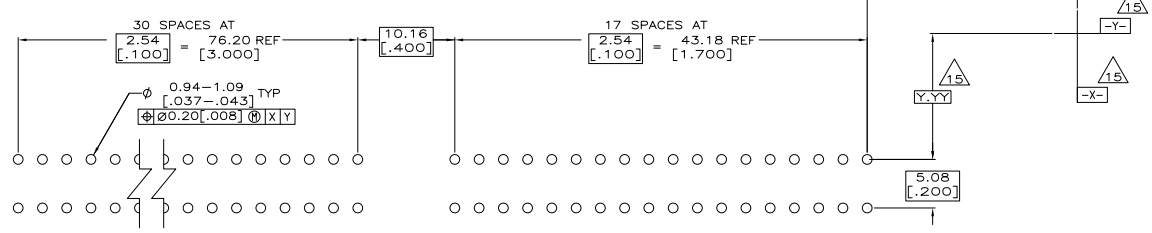
CUSTOMER DRAWING

THIS DRAWING IS UNPUBLISHED  
 ALL RIGHTS RESERVED

REV	DATE	DESCRIPTION	BY	APP'D
00				



RECOMMENDED CONNECTOR P.C. BOARD PAD LAYOUT



RECOMMENDED CONNECTOR P.C. BOARD HOLE PATTERN

THIS DRAWING IS A CONTROLLED DOCUMENT.		DATE: 14 JUN 93	TE Connectivity
DRAWN BY: FRANTZUM		DATE: 14 JUN 93	PROJECT NAME: 108-9039
CHECKED BY: FRANTZUM		DATE: 14 JUN 93	OPERATION SPEC: STANDARD EDGE II, 2.54 [100]
APPROVED BY: [Signature]		DATE: 14 JUN 93	REVISIONS: A1 00779 5645169
CUSTOMER DRAWING		DATE: 5.1	SHEET: 2 OF 2