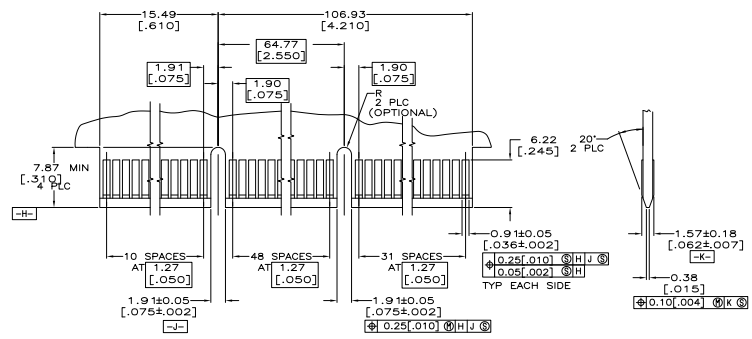


RECOMMENDED CONNECTOR MOUNTING HOLE PATTERN
 (CONNECTOR SIDE SHOWN)



RECOMMENDED MATING BOARD EDGE CONFIGURATION

- △ HOUSING: HIGH TEMPERATURE THERMOPLASTIC.
COLOR - NATURAL
- △ CONTACT: PHOSPHOR BRONZE.
- △ CONTACT FINISH: 0.00127[0.00050] MIN NICKEL ALL OVER.
GOLD FLASH OVER NICKEL IN CONTACT AREA.
0.00254[0.00100] MIN TIN-LEAD OVER NICKEL ON SOLDER TAILS.
- △ CONTACT FINISH: 0.00127[0.00050] MIN NICKEL ALL OVER.
0.00038[0.00015] GOLD OVER NICKEL IN CONTACT AREA.
0.00254[0.00100] MIN TIN-LEAD OVER NICKEL ON SOLDER TAILS.
- △ CONTACT FINISH: 0.00127[0.00050] MIN NICKEL ALL OVER.
0.00076[0.00030] GOLD OVER NICKEL IN CONTACT AREA.
0.00254[0.00100] MIN TIN-LEAD OVER NICKEL ON SOLDER TAILS.
- △ DISTANCE FROM CONTACT POINT TO BOTTOM OF CARD SLOT.
- △ AMP PART NUMBER, DATE CODE AND CSA LOGO MARKED IN APPROXIMATE LOCATION SHOWN.
- △ CORED OR SOLID SIDE WALLS ARE AT DISCRETION OF AMP INCORPORATED.
- △ OBSOLETE PARTS: OBSOLETE CIS STREAMLINING PER D.RENAUD/D.SINISI

THIS DRAWING IS A CONTROLLED DOCUMENT.		REV	DATE	
DRAWING NO. 108-14034		BY	DATE	
PROJECT TITLE		DRAWN BY		TE Connectivity CONNECTOR ASSEMBLY, 92 DUAL POSITION, 050 SERIES.
CUSTOMER DRAWING		DATE		
SEE SHEET 1		SEE SHEET 1		SIZE: 4.1 SHEET: 2 of 2 REF: HZ