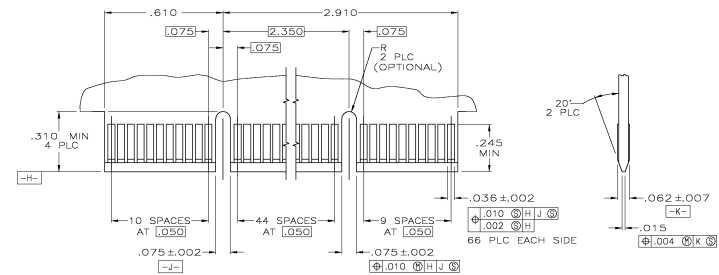
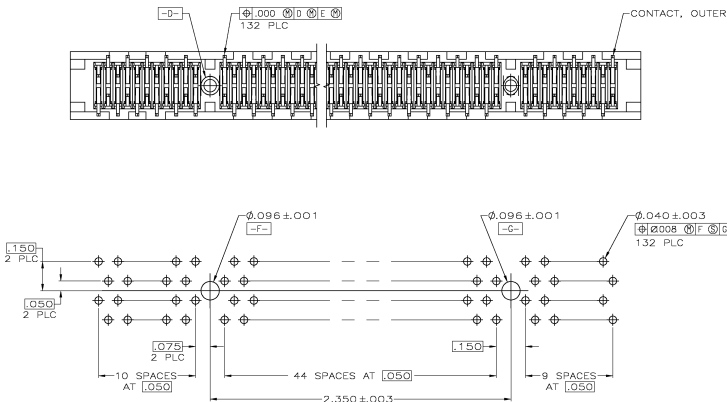


- △ HOUSING: HIGH TEMPERATURE THERMOPLASTIC. COLOR: BROWN.
- △ CONTACT: PHOSPHOR BRONZE.
- △ CONTACT FINISH: .000100 MIN NICKEL ALL OVER, .000330 MIN GOLD OVER NICKEL, N CONTACT AREA, .000100 MIN TIN-LEAD OVER NICKEL ON SOLDER TAILS.
- △ DISTANCE FROM CONTACT POINT TO BOTTOM OF CARD SLOT.
- △ AMP PART NUMBER, DATE CODE AND CSA LOGO MARKED IN APPROXIMATE AREA SHOWN.



RECOMMENDED MATING BOARD EDGE CONFIGURATION

OBsolete -125 650091-3
 .14 650091-2
 .10 650091-1
 W PART NUMBER

THIS DRAWING IS A CONTROLLED DOCUMENT		CLASSIFICATION		Type Electronics Corporation Harrisburg, Pa 17105-3608	
UNREVISIONED	REVISIONS	DATE	BY	CHK	APP
MATERIAL		PART		CUSTOMER DRAWING	
		A1 00779		Q=650091	
		SCALE 8:1		REV 1	