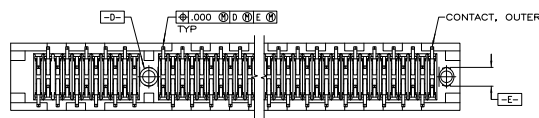
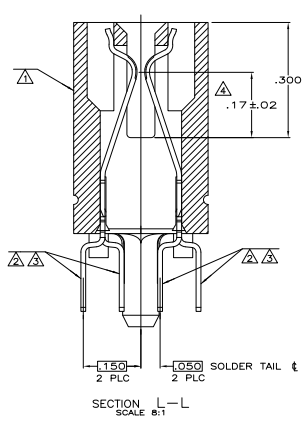
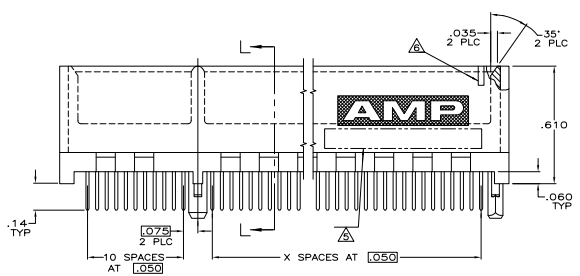
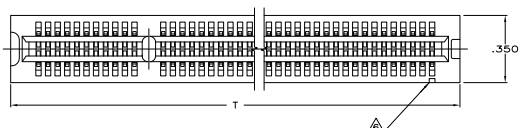


DRAWING MADE IN THIRD ANGLE PROJECTION
THIS DRAWING IS UNPUBLISHED

© COPYRIGHT 19 BY AMP INCORPORATED. ALL INTERNATIONAL RIGHTS RESERVED.

REVOLUTIONS		DATE	APPD
D	REDRAWN PER AD-5103	3/9/81	MB
E	REVISED PER AD6120	3/9/81	MB
F	REVISED PER AD6278	3/9/81	MB
G	REVISED PER 0010-0072-96	6/14/81	RB MB
H	REVISED PER 0430-0281-96	1/23/82	RB MB
J	REV PER EC 0081-0081-99	6/20/82	KW
J1	REVISED PER ECO-10-000443	10/20/82	FM/R



- △ HOUSING: HIGH TEMPERATURE THERMOPLASTIC. COLOR: BROWN.
- △ CONTACT: PHOSPHOR BRONZE.
- △ CONTACT FINISH: .000100 MIN NICKEL ALL OVER. .000030 MIN GOLD OVER NICKEL IN CONTACT AREA. .000100 MIN TIN-LEAD OVER NICKEL ON SOLDER TAILS.
- △ DISTANCE FROM CONTACT POINT TO BOTTOM OF CARD SLOT.
- △ AMP PART NUMBER, DATE CODE AND CSA LOGO MARKED IN APPROXIMATE AREA SHOWN.
- △ PIN ONE IDENTIFIER NOTCH ONLY ON PART NUMBERS INDICATED.
- △ OBSOLETE PARTS: OBSOLETE CIS STREAMLINING PER D.RENAUD/D.SINISI

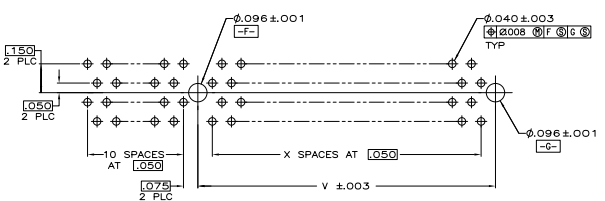
SEE SHEET 2 FOR HOLE PATTERNS

SUPERCEDED BY 5650181-3		NO	B	1.700	.860	1.49	1.1	23	650181-3
NO	A	1.550	1.510	2.34	.28	40		650181-21	
YES	A	2.350	2.310	3.14	44	56		650181-1	
PIN ONE IDENTIFIER	HOLE PATTERN	V	U	T	X			NO OF DUAL POSN	
								PART NUMBER	

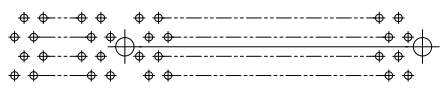
DO NOT SCALE PRINT. UNLESS SPECIFIED	DR 3/20/81 K.L.C./USER/J.T.A.	AMP Incorporated Harrisburg, PA 17105-3608
DIMENSIONS IN .MM [INCHES]	CHK 11-21-81	
TOLERANCES: .01	APPD 11-21-81	NAME CONNECTOR ASSEMBLY, DUAL POSITION, .050 SERIES, STANDARD EDGE
2 PLC DEC # .05	APPD M/MSMM	
INCHES # 2'	PRODUCT SPEC 108-14034	
MATERIAL	FINISH	SIZE
HOUSING: △	CONTACT: △	114-26012
		SCALE
		4-1
		DRAWING NO
		00779
		SHEET
		1 OF 2

CUSTOMER DRAWING

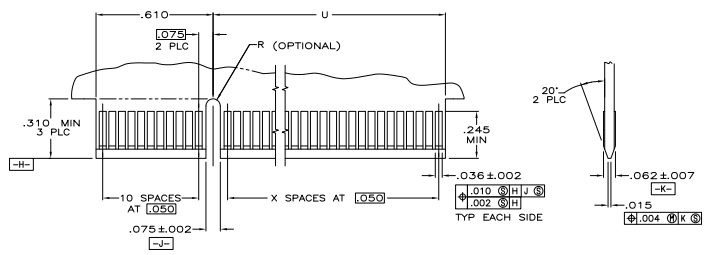
REVISIONS					DATE	APPD
NO.	REV	ZONE	LTR	DESCRIPTION		
AD	14	J1		SEE SHEET 1	-	-



RECOMMENDED CONNECTOR MOUNTING HOLE PATTERN A
 (CONNECTOR SIDE SHOWN)



RECOMMENDED CONNECTOR MOUNTING HOLE PATTERN B
 (CONNECTOR SIDE SHOWN)



RECOMMENDED MATING BOARD EDGE CONFIGURATION

DO NOT SCALE PRINT. UNLESS SPECIFIED DIMENSIONS IN .mm [INCHES] TYPICALS IN .mm 2 P.L.C. DEC # .01 3 P.L.C. DEC # .005 INCHES # 2"	DR 3/20/81 K.L.C./USER/UTA CHK 11-21-81 M.B.R. APPD 11-21-81 M.B.R. MATERIAL HOUSING: CONTACT:	AMP Incorporated Harrisburg, PA 17105-3608 NAME CONNECTOR ASSEMBLY, DUAL POSITION, .050 SERIES, STANDARD EDGE
FINISH CONTACT:	APPLICATION SPEC 114-26012 WEIGHT	SIZE D CAGE CODE 00779 SCALE 4:1 DRAWING NO 650181 SHEET 2 OF 2

CUSTOMER DRAWING