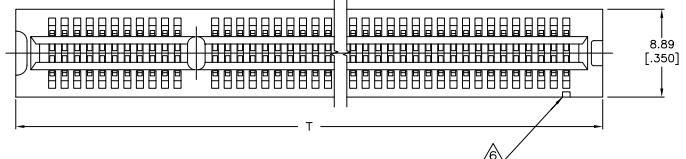
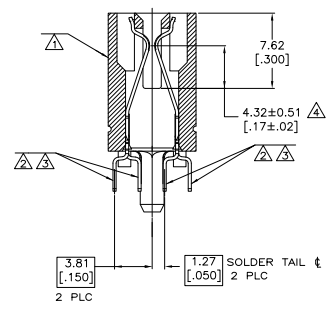
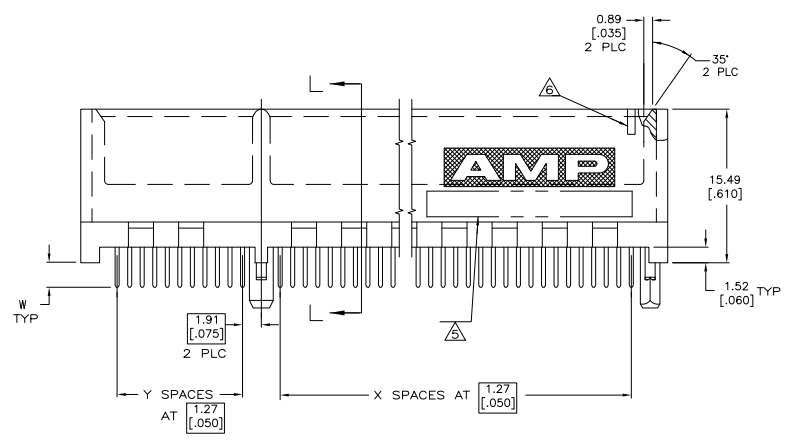


| REV | DATE      | DESCRIPTION                  | BY  | CHK | APP |
|-----|-----------|------------------------------|-----|-----|-----|
| 00  |           |                              |     |     |     |
| 01  | 13 SEP 04 | RELEASED PER EC 0512-0287-04 | AWF | AWF |     |
| 02  |           | REVISED PER ECO-10-000444    | KK  | HMR |     |

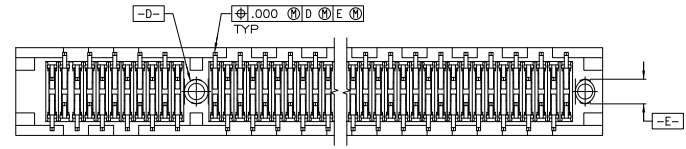


- △ HOUSING: HIGH TEMPERATURE THERMOPLASTIC. COLOR: BROWN.
- △ CONTACT: PHOSPHOR BRONZE.
- △ CONTACT FINISH: .000100 MIN NICKEL ALL OVER. .000030 MIN GOLD OVER NICKEL IN CONTACT AREA. .000100 MIN MATTE TIN OVER NICKEL ON SOLDER TAILS.
- △ DISTANCE FROM CONTACT POINT TO BOTTOM OF CARD SLOT.
- △ AMP PART NUMBER, DATE CODE AND CSA LOGO MARKED IN APPROXIMATE AREA SHOWN.
- △ PIN ONE IDENTIFIER NOTCH ONLY ON PART NUMBERS INDICATED.
- △ OBSOLETE PARTS: OBSOLETE CIS STREAMLINING PER D.RENAUD/D.SINISI



SECTION L-L  
SCALE 8:1

|            |             |     |   |               |               |               |               |    |    |    |             |
|------------|-------------|-----|---|---------------|---------------|---------------|---------------|----|----|----|-------------|
| △ OBSOLETE | 3.18 [1.25] | NO  | B | 45.72 [1.800] | 44.70 [1.760] | 65.79 [2.59]  | 15.49 [0.610] | 10 | 33 | 45 | 1-5650090-4 |
|            | 3.56 [1.40] | NO  | A | 28.67 [1.130] | 25.65 [1.010] | 46.74 [1.84]  | 15.49 [0.610] | 10 | 18 | 30 | 1-5650090-2 |
| △ OBSOLETE | 3.56 [1.40] | NO  | C | 55.88 [2.200] | 54.86 [2.160] | 110.24 [4.34] | 49.78 [1.960] | 37 | 41 | 80 | 1-5650090-1 |
|            | 2.54 [1.00] | NO  | C | 55.88 [2.200] | 54.86 [2.160] | 110.24 [4.34] | 49.78 [1.960] | 37 | 41 | 80 | 5650090-9   |
|            | 2.54 [1.00] | NO  | B | 17.78 [0.700] | 16.76 [0.660] | 37.85 [1.49]  | 15.49 [0.610] | 10 | 11 | 23 | 5650090-7   |
|            | 2.54 [1.00] | NO  | A | 28.67 [1.130] | 25.65 [1.010] | 46.74 [1.84]  | 15.49 [0.610] | 10 | 18 | 30 | 5650090-6   |
|            | 2.54 [1.00] | NO  | A | 39.37 [1.550] | 38.35 [1.510] | 59.44 [2.34]  | 15.49 [0.610] | 10 | 28 | 40 | 5650090-3   |
|            | 2.54 [1.00] | NO  | B | 45.72 [1.800] | 44.70 [1.760] | 65.79 [2.59]  | 15.49 [0.610] | 10 | 33 | 45 | 5650090-2   |
|            | 2.54 [1.00] | YES | A | 59.69 [2.350] | 58.67 [2.310] | 79.76 [3.14]  | 15.49 [0.610] | 10 | 44 | 56 | 5650090-1   |



SEE SHEET 2 FOR HOLE PATTERNS

THIS DRAWING IS A CONTROLLED DOCUMENT. DATE 24 JUN 93. BY ERANTUM. DATE 24 JUN 93. BY ERANTUM.

AMP ELECTRONICS CORPORATION  
 Harrisburg, Pa 17105-3008

PROJECT FILE: 108-14034  
 DRAWING NO: 114-26012  
 DATE: 11-1-93

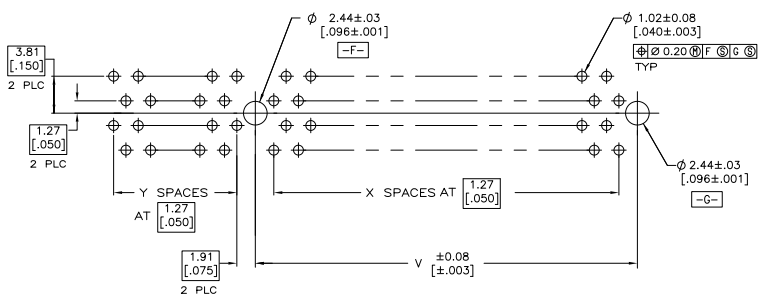
CONNECTIONS: AMP  
 DIMENSIONS: mm  
 TOLERANCES: AS SHOWN  
 FINISH: AS SHOWN  
 MATERIAL: AS SHOWN

CONNECTOR ASSEMBLY, DUAL POSITION, 090 SERIES  
 PART NUMBER: 5650090  
 CUSTOMER DRAWING

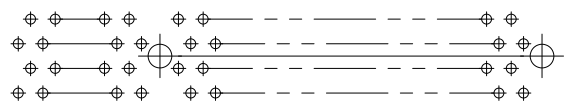
DATE: 5.1  
 SHEET: 1  
 OF: 2

THIS DRAWING IS UNPUBLISHED  
 UNLESS OTHERWISE SPECIFIED  
 ALL RIGHTS RESERVED

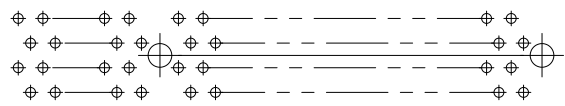
| REV | DATE | DESCRIPTION | BY | APP'D |
|-----|------|-------------|----|-------|
| 00  |      | SEE SHEET 1 |    |       |



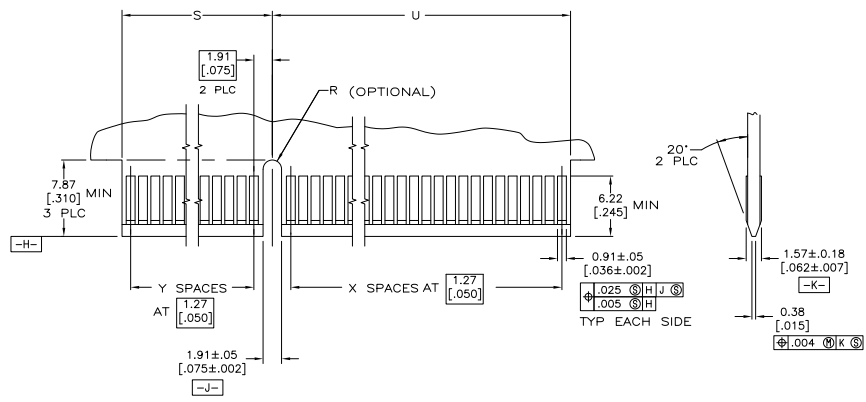
RECOMMENDED CONNECTOR MOUNTING HOLE PATTERN A  
 (CONNECTOR SIDE SHOWN)



RECOMMENDED CONNECTOR MOUNTING HOLE PATTERN B  
 (CONNECTOR SIDE SHOWN)



RECOMMENDED CONNECTOR MOUNTING HOLE PATTERN C



RECOMMENDED MATING BOARD EDGE CONFIGURATION  
 (CONNECTOR SIDE SHOWN)

| THIS DRAWING IS A CONTROLLED DOCUMENT. |  | REV   | DATE      | DESCRIPTION | BY | APP'D |
|--|--|---|-----------|-------------|----|-------|
| DRAWING                                |  | 00  | 24 JUN 93 | SEE SHEET 1 |    |       |
| REVISIONS                              |  |   |           |             |    |       |
| PROJECT TITLE                          |  | CONNECTOR ASSEMBLY, DUAL POSITION, 050 SERIES |           |             |    |       |
| PROJECT NO.                            |  | 108-14034                                     |           |             |    |       |
| REV. NO.                               |  | 114-26012                                     |           |             |    |       |
| REV. DATE                              |  | A1 00779 G=5650090                            |           |             |    |       |
| REV. DESCRIPTION                       |  | CUSTOMER DRAWING                              |           |             |    |       |
| REV. DATE                              |  | DATE: 6.1 SHEET: 2 OF 01                      |           |             |    |       |