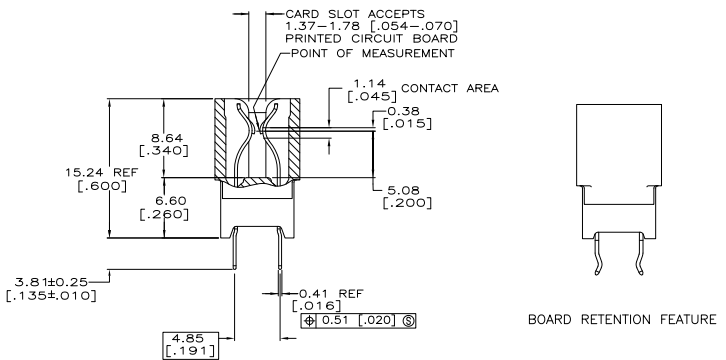
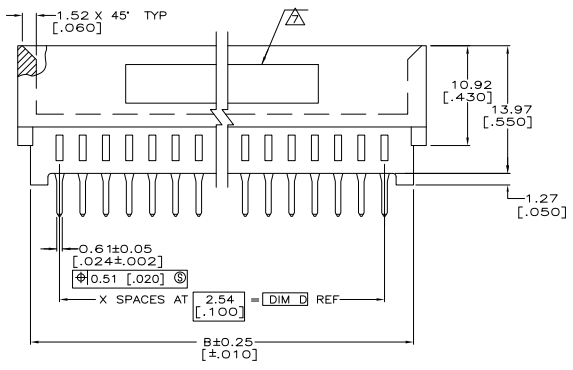
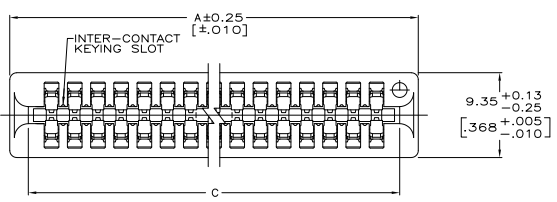


REV	DATE	DESCRIPTION	BY	CHKD
AA	00			
H		E20-08-013693		CRANDON/LAM/JWF

- △ HOUSING: GLASS FILLED POLYESTER; COLOR: BLACK.
- △ CONTACT: PHOSPHOR BRONZE.
- △ NICKEL UNDERPLATE: 0.00127 [.000050] MIN - ALL OVER.
- △ TIN-LEAD PLATE: 0.00254 [.000100] MIN - SOLDER POSTS.
- △ GOLD PLATE: 0.00076 [.000030] MIN - CONTACT AREA.
- △ NICKEL PLATE PER MIL-G-45204.
- △ GOLD PLATE PER QQ-N-290.
- △ TE PART NUMBER, DATE CODE AND CSA LOGO ARE MARKED IN APPROXIMATE AREA SHOWN, EITHER SIDE.
- 8. RECOMMENDED PCB FINISHED HOLE DIA: 1.02±0.08 [.040±.003].
- △ THE RETENTION FEATURE OF THIS CONNECTOR IS DESIGNED FOR FULL SEATING IN A .062±0.008 THICK CIRCUIT BOARD, #119231-1 H.



3,4,23,24	30.48 [1.200]	35.56 [1.400]	36.83 [1.450]	39.62 [1.560]	12	13	145274-1
RETENTION FEATURE LOCATION	D	C	B	A	X	NO OF POSN	PART NUMBER

THIS DRAWING IS A CONTROLLED DOCUMENT. IT IS THE PROPERTY OF TTI ELECTRONICS CORPORATION. IT IS TO BE KEPT IN CONFIDENCE AND NOT TO BE REPRODUCED OR TRANSMITTED IN ANY FORM OR BY ANY MEANS, ELECTRONIC OR MECHANICAL, INCLUDING PHOTOCOPYING, RECORDING, OR BY ANY INFORMATION STORAGE AND RETRIEVAL SYSTEM.

DATE CODE: 108-9039
 REV: 114-13018
 SIZE: 4.1
 DRAWING NO: A100779
 CUSTOMER DRAWING

TTI Electronics Corporation
 Harrisburg, Pa 17105-3608

CONNECTOR ASSEMBLY,
 STANDARD EDGE II,
 2.54 (100)