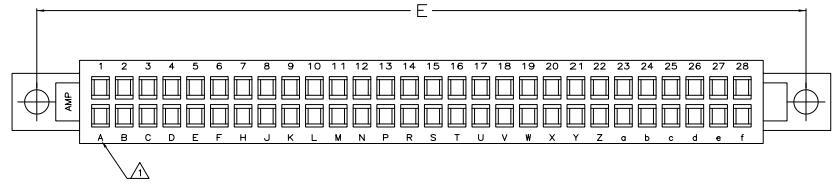
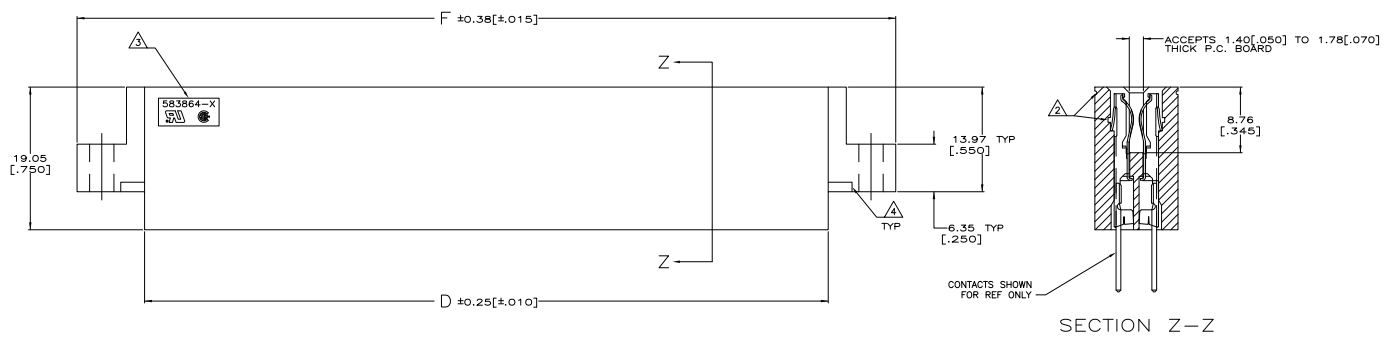
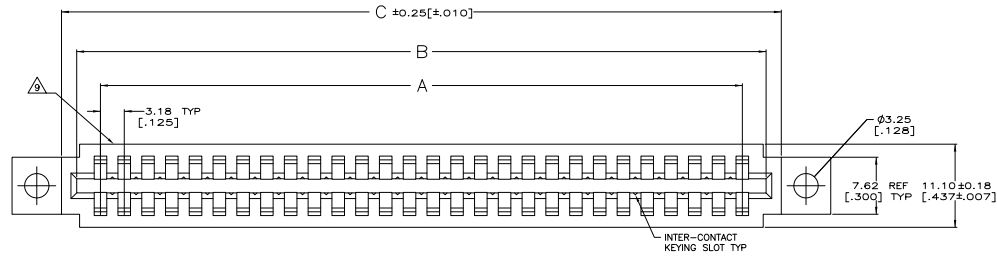


THIS DRAWING IS UNPUBLISHED
 ALL INFORMATION HEREIN IS UNCLASSIFIED
 EXCEPT WHERE SHOWN OTHERWISE

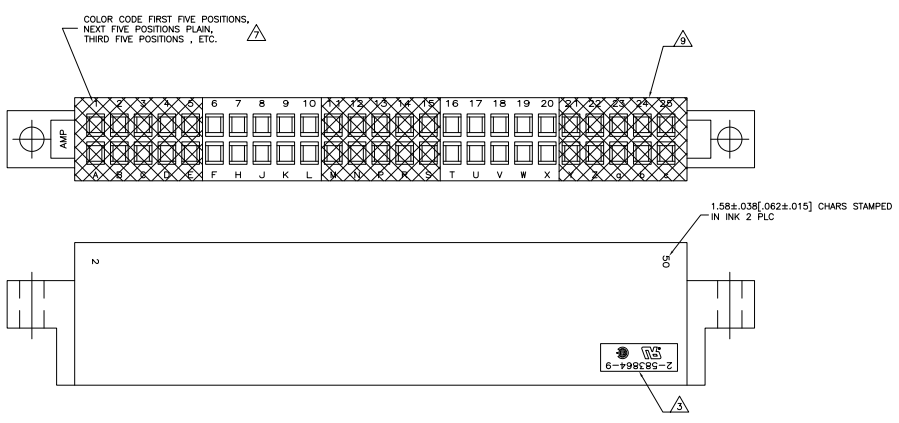
| REV | DATE | DESCRIPTION | BY | CHK |
|-----|------|---------------------------|---------|--------|
| 00 | | | | |
| 21 | | REVISED PER ECO-08-028581 | 300CT18 | HMR/MM |
| 22 | | REVISED PER ECO-08-021810 | 128EP18 | KK/AEG |



| | | | | | |
|--|----------|-------------------------|---------------|-----------------|------------------|
| THIS DRAWING IS A CONTROLLED DOCUMENT. | | REV. CALLED BY: 12-2-81 | DATE: 12-2-81 | BY: [Signature] | CHK: [Signature] |
| INCHES | DECIMALS | FRAC. | DEC. | FRAC. | DEC. |
| 1/16 | 0.0625 | 1/32 | 0.03125 | 1/64 | 0.015625 |
| 1/8 | 0.125 | 3/32 | 0.09375 | 1/16 | 0.0625 |
| 3/16 | 0.1875 | 1/4 | 0.25 | 3/32 | 0.09375 |
| 1/4 | 0.25 | 5/16 | 0.3125 | 1/2 | 0.5 |
| 5/16 | 0.3125 | 3/4 | 0.375 | 5/8 | 0.625 |
| 3/4 | 0.375 | 7/8 | 0.4375 | 1 | 1.0 |
| 7/8 | 0.4375 | 1 | 1.0 | | |
| 1 | 1.0 | | | | |
| 2 | 2.0 | | | | |
| 3 | 3.0 | | | | |
| 4 | 4.0 | | | | |
| 5 | 5.0 | | | | |
| 6 | 6.0 | | | | |
| 7 | 7.0 | | | | |
| 8 | 8.0 | | | | |
| 9 | 9.0 | | | | |
| 10 | 10.0 | | | | |
| 11 | 11.0 | | | | |
| 12 | 12.0 | | | | |
| 13 | 13.0 | | | | |
| 14 | 14.0 | | | | |
| 15 | 15.0 | | | | |
| 16 | 16.0 | | | | |
| 17 | 17.0 | | | | |
| 18 | 18.0 | | | | |
| 19 | 19.0 | | | | |
| 20 | 20.0 | | | | |
| 21 | 21.0 | | | | |
| 22 | 22.0 | | | | |
| 23 | 23.0 | | | | |
| 24 | 24.0 | | | | |
| 25 | 25.0 | | | | |
| 26 | 26.0 | | | | |
| 27 | 27.0 | | | | |
| 28 | 28.0 | | | | |
| 29 | 29.0 | | | | |
| 30 | 30.0 | | | | |
| 31 | 31.0 | | | | |
| 32 | 32.0 | | | | |
| 33 | 33.0 | | | | |
| 34 | 34.0 | | | | |
| 35 | 35.0 | | | | |
| 36 | 36.0 | | | | |
| 37 | 37.0 | | | | |
| 38 | 38.0 | | | | |
| 39 | 39.0 | | | | |
| 40 | 40.0 | | | | |
| 41 | 41.0 | | | | |
| 42 | 42.0 | | | | |
| 43 | 43.0 | | | | |
| 44 | 44.0 | | | | |
| 45 | 45.0 | | | | |
| 46 | 46.0 | | | | |
| 47 | 47.0 | | | | |
| 48 | 48.0 | | | | |
| 49 | 49.0 | | | | |
| 50 | 50.0 | | | | |
| 51 | 51.0 | | | | |
| 52 | 52.0 | | | | |
| 53 | 53.0 | | | | |
| 54 | 54.0 | | | | |
| 55 | 55.0 | | | | |
| 56 | 56.0 | | | | |
| 57 | 57.0 | | | | |
| 58 | 58.0 | | | | |
| 59 | 59.0 | | | | |
| 60 | 60.0 | | | | |
| 61 | 61.0 | | | | |
| 62 | 62.0 | | | | |
| 63 | 63.0 | | | | |
| 64 | 64.0 | | | | |
| 65 | 65.0 | | | | |
| 66 | 66.0 | | | | |
| 67 | 67.0 | | | | |
| 68 | 68.0 | | | | |
| 69 | 69.0 | | | | |
| 70 | 70.0 | | | | |
| 71 | 71.0 | | | | |
| 72 | 72.0 | | | | |
| 73 | 73.0 | | | | |
| 74 | 74.0 | | | | |
| 75 | 75.0 | | | | |
| 76 | 76.0 | | | | |
| 77 | 77.0 | | | | |
| 78 | 78.0 | | | | |
| 79 | 79.0 | | | | |
| 80 | 80.0 | | | | |
| 81 | 81.0 | | | | |
| 82 | 82.0 | | | | |
| 83 | 83.0 | | | | |
| 84 | 84.0 | | | | |
| 85 | 85.0 | | | | |
| 86 | 86.0 | | | | |
| 87 | 87.0 | | | | |
| 88 | 88.0 | | | | |
| 89 | 89.0 | | | | |
| 90 | 90.0 | | | | |
| 91 | 91.0 | | | | |
| 92 | 92.0 | | | | |
| 93 | 93.0 | | | | |
| 94 | 94.0 | | | | |
| 95 | 95.0 | | | | |
| 96 | 96.0 | | | | |
| 97 | 97.0 | | | | |
| 98 | 98.0 | | | | |
| 99 | 99.0 | | | | |
| 100 | 100.0 | | | | |

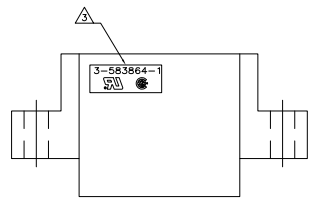
488 (1/86)

| REV | DATE | BY | DESCRIPTION | APP'D | DATE |
|-----|------|----|-------------|-------|------|
| AD | 00 | | SEE SHEET 1 | | |



- △ FIRST 22 POSITIONS MARKED WITH UPPER CASE LETTERS, FOLLOWED BY LOWER CASE LETTERS, FOLLOWED BY UPPERCASE AA, AB, AC ETC. CHARACTERS G, I, O AND Q ARE OMITTED. SEE TABLE FOR END CAVITY IDENTIFICATION.
- △ PULL GROOVES OPTIONAL THESE LOCATIONS REF ONLY.
- △ HOUSING PART NUMBER, UL & CSA LOGO'S TO BE MOLDED IN THIS AREA. UL LOGO PER 1-18838-3, CSA LOGO PER 1-18839-3.
- △ CORING AT AMP'S OPTION REF ONLY.
- △ SPECIAL STAMPING FOR 2-583864-7.
- △ SPECIAL STAMPING FOR 2-583864-8.
- △ SPECIAL STAMPING FOR 2-583864-9.
- △ SPECIAL STAMPING FOR 3-583864-1.
- △ DATE CODE TO BE MOLDED IN THIS AREA
- △ OBSOLETE PARTS: OBSOLETE CIS STREAMLINING PER D.RENAUD/D.SINISI

2-583864-9 △



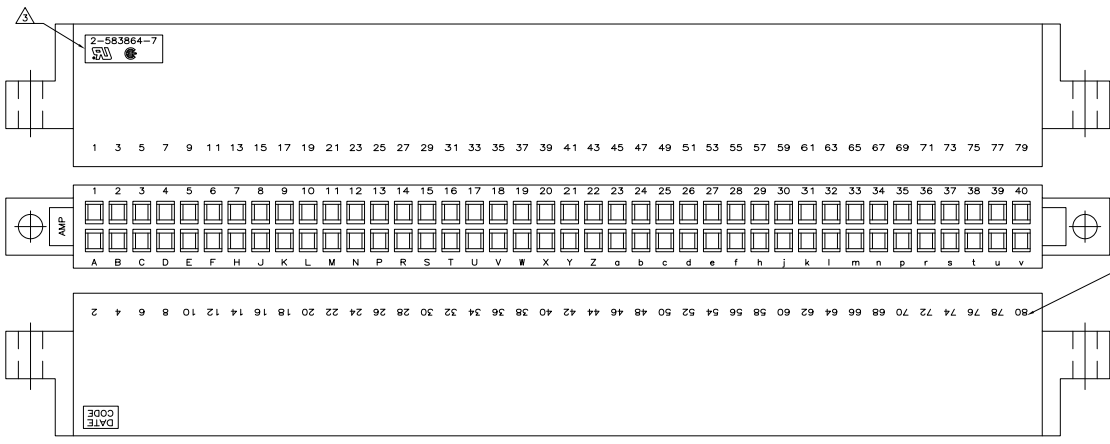
3-583864-1 △

| | | | | | | | | | |
|----------|---|---------|---------|---------|---------|---------|---------|----|------------|
| OBSOLETE | △ | 39.50 | 32.89 | 21.46 | 26.29 | 22.23 | 15.88 | 6 | 3-583864-1 |
| | | [1.555] | [1.295] | [.845] | [1.035] | [.875] | [.625] | | |
| OBSOLETE | △ | 99.82 | 93.22 | 81.79 | 86.61 | 82.55 | 76.20 | 25 | 2-583864-9 |
| | | [3.930] | [3.670] | [3.220] | [3.410] | [3.250] | [3.000] | | |
| OBSOLETE | △ | 118.87 | 112.27 | 100.84 | 105.66 | 101.60 | 95.25 | 31 | 2-583864-8 |
| | | [4.680] | [4.420] | [3.970] | [4.160] | [4.000] | [3.750] | | |
| OBSOLETE | △ | 147.45 | 140.84 | 129.41 | 134.24 | 130.18 | 123.83 | 40 | 2-583864-7 |
| | | [5.805] | [5.545] | [5.095] | [5.285] | [5.125] | [4.875] | | |
| OBSOLETE | △ | 118.87 | 112.27 | 100.84 | 105.66 | 101.60 | 95.25 | 31 | 2-583864-5 |
| | | [4.680] | [4.420] | [3.970] | [4.160] | [3.863] | [3.750] | | |
| OBSOLETE | △ | 134.75 | 128.14 | 116.71 | 121.56 | 117.48 | 111.13 | 36 | 2-583864-3 |
| | | [5.305] | [5.045] | [4.595] | [4.785] | [4.625] | [4.375] | | |
| OBSOLETE | △ | 115.70 | 109.09 | 97.66 | 102.49 | 98.43 | 92.08 | 30 | 2-583864-1 |
| | | [4.555] | [4.295] | [3.845] | [4.035] | [3.875] | [3.625] | | |
| OBSOLETE | △ | 180.15 | 153.54 | 142.11 | 146.94 | 142.88 | 136.53 | 44 | 1-583864-9 |
| | | [6.305] | [6.045] | [5.595] | [5.785] | [5.625] | [5.375] | | |
| OBSOLETE | △ | 147.45 | 140.84 | 129.41 | 134.24 | 130.18 | 123.83 | 40 | 1-583864-7 |
| | | [5.805] | [5.545] | [5.095] | [5.285] | [5.125] | [4.875] | | |
| OBSOLETE | △ | 118.87 | 112.27 | 100.84 | 105.66 | 101.60 | 95.25 | 31 | 1-583864-5 |
| | | [4.680] | [4.420] | [3.970] | [4.160] | [4.000] | [3.750] | | |
| OBSOLETE | △ | 109.35 | 102.74 | 91.31 | 96.14 | 92.08 | 85.73 | 28 | 1-583864-3 |
| | | [4.305] | [4.045] | [3.595] | [3.785] | [3.625] | [3.375] | | |
| OBSOLETE | △ | 99.82 | 93.22 | 81.79 | 86.61 | 82.55 | 76.20 | 25 | 1-583864-1 |
| | | [3.930] | [3.670] | [3.220] | [3.410] | [3.250] | [3.000] | | |
| OBSOLETE | △ | 90.30 | 83.69 | 72.26 | 77.09 | 73.03 | 66.68 | 22 | 583864-9 |
| | | [3.555] | [3.295] | [2.845] | [3.035] | [2.875] | [2.625] | | |
| OBSOLETE | △ | 77.60 | 70.99 | 59.56 | 64.39 | 60.33 | 53.98 | 18 | 583864-7 |
| | | [3.055] | [2.795] | [2.345] | [2.535] | [2.375] | [2.125] | | |
| OBSOLETE | △ | 68.07 | 61.47 | 50.04 | 54.86 | 50.80 | 44.45 | 15 | 583864-5 |
| | | [2.680] | [2.420] | [1.970] | [2.160] | [2.000] | [1.750] | | |
| OBSOLETE | △ | 52.20 | 45.59 | 34.16 | 38.99 | 34.93 | 28.58 | 10 | 583864-3 |
| | | [2.055] | [1.795] | [1.345] | [1.535] | [1.375] | [1.125] | | |
| OBSOLETE | △ | 39.50 | 32.89 | 21.46 | 26.29 | 22.23 | 15.88 | 6 | 583864-1 |
| | | [1.555] | [1.295] | [.845] | [1.035] | [.875] | [.625] | | |

| INCHES | MILLIMETERS | INCHES | MILLIMETERS | INCHES | MILLIMETERS | INCHES | MILLIMETERS |
|--------|-------------|--------|-------------|--------|-------------|--------|-------------|
| 1/16 | 1.5875 | 1/8 | 3.175 | 3/16 | 4.7625 | 1/4 | 6.35 |
| 5/16 | 7.9375 | 3/8 | 9.525 | 1/2 | 12.7 | 5/8 | 15.875 |
| 3/4 | 19.05 | 7/8 | 22.225 | 1 | 25.4 | 1 1/8 | 29.525 |
| 1 1/4 | 31.75 | 1 3/8 | 34.925 | 1 1/2 | 38.1 | 1 5/8 | 41.275 |
| 1 3/4 | 44.45 | 1 7/8 | 47.625 | 2 | 50.8 | 2 1/8 | 54.0 |
| 2 1/4 | 57.15 | 2 3/8 | 60.325 | 2 1/2 | 63.5 | 2 7/8 | 71.125 |
| 3 | 76.2 | 3 1/8 | 79.375 | 3 1/2 | 88.9 | 3 5/8 | 92.075 |
| 3 3/4 | 95.25 | 4 | 101.6 | 4 1/4 | 111.75 | 4 3/4 | 120.65 |
| 5 | 127 | 5 1/4 | 138.1 | 5 1/2 | 141.25 | 5 3/4 | 146.05 |
| 6 | 152.4 | 6 1/4 | 162.7 | 6 1/2 | 165.1 | 6 3/4 | 171.45 |
| 7 | 177.8 | 7 1/4 | 188.275 | 7 1/2 | 190.5 | 7 3/4 | 196.85 |
| 8 | 203.2 | 8 1/4 | 213.675 | 8 1/2 | 215.9 | 8 3/4 | 221.65 |
| 9 | 228.6 | 9 1/4 | 239.175 | 9 1/2 | 241.45 | 9 3/4 | 247.65 |
| 10 | 254 | 10 1/4 | 264.675 | 10 1/2 | 266.9 | 10 3/4 | 272.65 |
| 11 | 279.4 | 11 1/4 | 290.175 | 11 1/2 | 292.45 | 11 3/4 | 298.45 |
| 12 | 304.8 | 12 1/4 | 315.675 | 12 1/2 | 317.95 | 12 3/4 | 323.65 |
| 13 | 330.2 | 13 1/4 | 341.175 | 13 1/2 | 343.65 | 13 3/4 | 349.65 |
| 14 | 355.6 | 14 1/4 | 366.675 | 14 1/2 | 369.15 | 14 3/4 | 375.65 |
| 15 | 381 | 15 1/4 | 392.175 | 15 1/2 | 394.65 | 15 3/4 | 400.65 |
| 16 | 406.4 | 16 1/4 | 417.675 | 16 1/2 | 420.15 | 16 3/4 | 426.65 |
| 17 | 431.8 | 17 1/4 | 443.175 | 17 1/2 | 445.65 | 17 3/4 | 451.65 |
| 18 | 457.2 | 18 1/4 | 468.675 | 18 1/2 | 471.15 | 18 3/4 | 477.65 |
| 19 | 482.6 | 19 1/4 | 494.175 | 19 1/2 | 496.65 | 19 3/4 | 502.65 |
| 20 | 508 | 20 1/4 | 519.675 | 20 1/2 | 522.15 | 20 3/4 | 528.65 |
| 21 | 533.4 | 21 1/4 | 545.175 | 21 1/2 | 547.65 | 21 3/4 | 553.65 |
| 22 | 558.8 | 22 1/4 | 570.675 | 22 1/2 | 573.15 | 22 3/4 | 579.65 |
| 23 | 584.2 | 23 1/4 | 596.175 | 23 1/2 | 598.65 | 23 3/4 | 604.65 |
| 24 | 609.6 | 24 1/4 | 621.675 | 24 1/2 | 624.15 | 24 3/4 | 630.65 |
| 25 | 635 | 25 1/4 | 647.175 | 25 1/2 | 649.65 | 25 3/4 | 655.65 |
| 26 | 660.4 | 26 1/4 | 672.675 | 26 1/2 | 675.15 | 26 3/4 | 681.65 |
| 27 | 685.8 | 27 1/4 | 698.175 | 27 1/2 | 700.65 | 27 3/4 | 706.65 |
| 28 | 711.2 | 28 1/4 | 723.675 | 28 1/2 | 726.15 | 28 3/4 | 732.65 |
| 29 | 736.6 | 29 1/4 | 749.175 | 29 1/2 | 751.65 | 29 3/4 | 757.65 |
| 30 | 762 | 30 1/4 | 774.675 | 30 1/2 | 777.15 | 30 3/4 | 783.65 |
| 31 | 787.4 | 31 1/4 | 800.175 | 31 1/2 | 802.65 | 31 3/4 | 808.65 |
| 32 | 812.8 | 32 1/4 | 825.675 | 32 1/2 | 828.15 | 32 3/4 | 834.65 |
| 33 | 838.2 | 33 1/4 | 851.175 | 33 1/2 | 853.65 | 33 3/4 | 859.65 |
| 34 | 863.6 | 34 1/4 | 876.675 | 34 1/2 | 879.15 | 34 3/4 | 885.65 |
| 35 | 889 | 35 1/4 | 902.175 | 35 1/2 | 904.65 | 35 3/4 | 910.65 |
| 36 | 914.4 | 36 1/4 | 927.675 | 36 1/2 | 930.15 | 36 3/4 | 936.65 |
| 37 | 939.8 | 37 1/4 | 953.175 | 37 1/2 | 955.65 | 37 3/4 | 961.65 |
| 38 | 965.2 | 38 1/4 | 978.675 | 38 1/2 | 981.15 | 38 3/4 | 987.65 |
| 39 | 990.6 | 39 1/4 | 1004.175 | 39 1/2 | 1006.65 | 39 3/4 | 1012.65 |
| 40 | 1016 | 40 1/4 | 1029.675 | 40 1/2 | 1032.15 | 40 3/4 | 1038.65 |
| 41 | 1041.4 | 41 1/4 | 1055.175 | 41 1/2 | 1057.65 | 41 3/4 | 1063.65 |
| 42 | 1066.8 | 42 1/4 | 1080.675 | 42 1/2 | 1083.15 | 42 3/4 | 1089.65 |
| 43 | 1092.2 | 43 1/4 | 1106.175 | 43 1/2 | 1108.65 | 43 3/4 | 1114.65 |
| 44 | 1117.6 | 44 1/4 | 1131.675 | 44 1/2 | 1134.15 | 44 3/4 | 1140.65 |
| 45 | 1143 | 45 1/4 | 1157.175 | 45 1/2 | 1159.65 | 45 3/4 | 1165.65 |
| 46 | 1168.4 | 46 1/4 | 1182.675 | 46 1/2 | 1185.15 | 46 3/4 | 1191.65 |
| 47 | 1193.8 | 47 1/4 | 1208.175 | 47 1/2 | 1210.65 | 47 3/4 | 1216.65 |
| 48 | 1219.2 | 48 1/4 | 1233.675 | 48 1/2 | 1236.15 | 48 3/4 | 1242.65 |
| 49 | 1244.6 | 49 1/4 | 1259.175 | 49 1/2 | 1261.65 | 49 3/4 | 1267.65 |
| 50 | 1270 | 50 1/4 | 1284.675 | 50 1/2 | 1287.15 | 50 3/4 | 1293.65 |

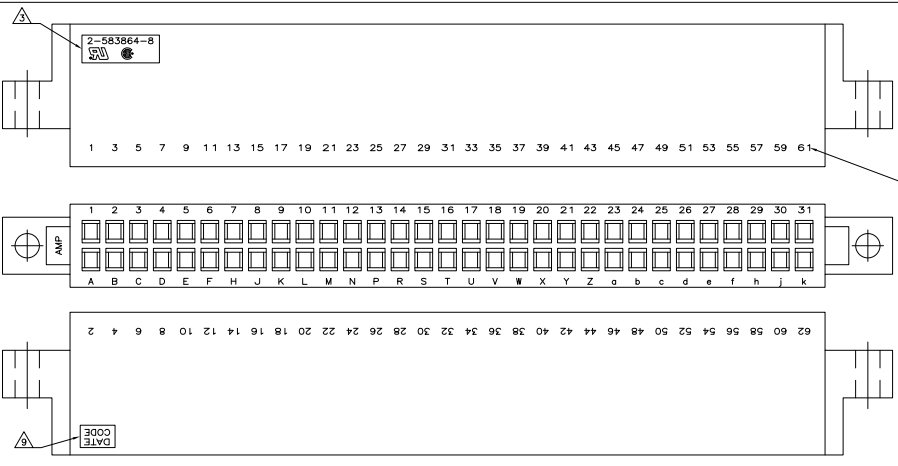
THIS DRAWING IS UNPUBLISHED
 ALL INFORMATION HEREIN IS UNCLASSIFIED
 DATE 03/20/00 BY 2025/ELECTRONICS CORPORATION

| REV | DATE | DESCRIPTION | BY | APP'D |
|-----|------|-------------|----|-------|
| AD | 00 | SEE SHEET 1 | - | - |



1.17[.046] HIGH CHARS INK, ONE SIDE TO BE ODD NUMBERS 1,3,5... 77,79 OTHER SIDE TO BE EVEN NUMBERS 2,4,6... 78,80

2-583864-7



1.17[.046] HIGH CHARS INK, ONE SIDE TO BE ODD NUMBERS 1,3,5... 59,61 OTHER SIDE TO BE EVEN NUMBERS 2,4,6... 60,62

2-583864-8

| | | | | | |
|---|---------|--|-------|----------|------------|
| THIS DRAWING IS A CONTROLLED DOCUMENT. | | REV | DATE | BY | APP'D |
| UNLESS OTHERWISE SPECIFIED, DIMENSIONS ARE IN INCHES. | | AD | 00 | | |
| FINISH | PLATING | REF | DATE | BY | APP'D |
| | | | | | |
| TOLERANCES UNLESS OTHERWISE SPECIFIED: | | TWO ELECTRONICS CORPORATION Harrisburg, PA 17105-3008 | | | |
| ±.005 | ±.001 | HOUSING, CRIMP SNAP | | | |
| ±.002 | ±.0005 | TWIN LEAF, .125 O/D | | | |
| ±.001 | ±.0002 | WITH MOUNTING EARS | | | |
| ±.0005 | ±.0001 | SIZE | DATE | ISSUE | REVISED TO |
| | | A1 | 00779 | G=583864 | |
| CUSTOMER DRAWING | | SCALE | 1:1 | SHEET | 3 OF 3 |