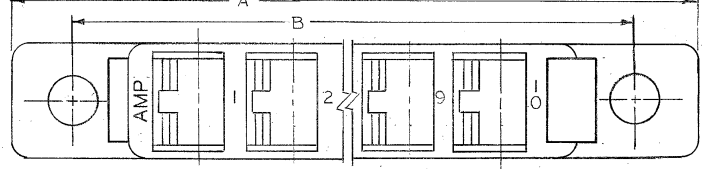
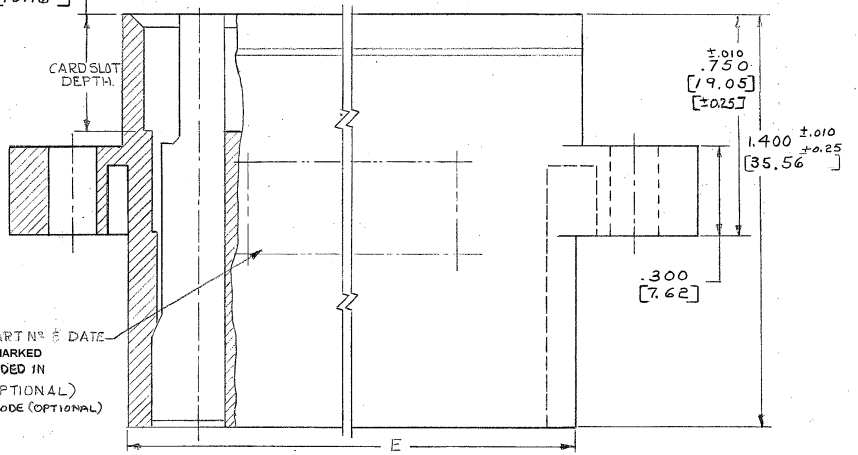
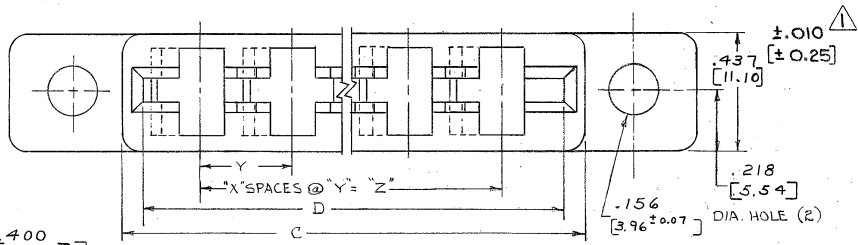


DRAWING MADE IN THIRD ANGLE PROJECTION

© COPYRIGHT 1975 BY AMP INCORPORATED, HARRISBURG, PA.
ALL INTERNATIONAL RIGHTS RESERVED. AMP INCORPORATED PRODUCTS
COVERED BY U. S. AND FOREIGN PATENTS AND/OR PATENTS PENDING.

REVISIONS					LOC	DIST
P	F	ZONE	LTR	DESCRIPTION	DATE	APPROVED
			A	REVISED <i>m.s. 4570</i>	10-75	<i>B.R.</i>
			B	REVISED <i>AS 5332</i>	5-78	<i>m.s.</i>
			B1	REVISED <i>6098 m.s.</i>	6-78	
			C	REVISED PER ECN 8454 <i>ZL</i>	5-83	
			D	REVISED PER ECI ADO188 <i>RL</i>	5/11/84	<i>R.J.</i>
			D1	REV PER AD1111	2/19/86	
			D2	REVISED PER AD1276	9/8/86	<i>CP</i>
			E	1085-9 PER ECI 0655-93	6-13	<i>RHC</i>
			F	REV. PER 0010-1158-85	11-85	<i>P.O.</i>
			G	REV PER 0652-0070-99	4/24/99	<i>MM</i>
			H	REV PER EC 0630-233-01	08/02/01	<i>MM</i>
			H1	REVISED PER ECO-10-000445	08/JAN/10	<i>AEG</i>



AMP PART NO & DATE CODE, MARKED OR MOLDED IN (SIDE OPTIONAL) DATE CODE (OPTIONAL)

UNLESS OTHERWISE SPECIFIED DIMENSIONS ARE IN <i>M.M.</i> TOLERANCES ON: DECIMALS ± [0.127] ANGLES ± [0.05]	CONTRACT NO		
	DR <i>Shubert 5-9-75</i>		NAME
	MATERIAL GLASS FILLED POLYESTER COLOR - NATURAL (WHITE)	CHK <i>Shubert 5-9-75</i>	HOUSING, HIGH-CURRENT CONNECTOR.
	FINISH	APPD <i>R. Sherman 5/14/75</i>	SIZE CODE IDENT NO DRAWING NO C 00779 530521
OTHER APPD		SCALE 1:1 SHEET 1 OF 2	

CUSTOMER DRAWING

330521

© COPYRIGHT 1975 BY AMP INCORPORATED, HARRISBURG, PA. ALL INTERNATIONAL RIGHTS RESERVED. AMP INCORPORATED PRODUCTS COVERED BY U.S. AND FOREIGN PATENTS AND/OR PATENTS PENDING.

REVISIONS			
NO	DATE	DESCRIPTION	APPROVED
		SEE SHEET 1 of 2	

PART NO.	No POS.	±.015 ±0.381		±.007 ±0.177		D		±.010 ±0.254		X	Y	Z	INCH M M TYP	OBSOLETE
		A	B	C	D	E								
530521-1	2	1.660 [42.16]	1.226 [31.14]	.852 [21.64]	.712 [18.08]	.802 [20.37]					.312 [7.92]	.312 [7.42]		
530521-2	3	1.978 [50.09]	1.538 [39.06]	1.164 [29.56]	1.024 [26.00]	1.114 [28.29]				2		.624 [15.84]		OBSOLETE
530521-3	4	2.284 [58.01]	1.850 [46.99]	1.476 [37.49]	1.336 [33.93]	1.426 [36.22]				3		.936 [23.77]		
530521-4	5	2.596 [65.94]	2.162 [54.91]	1.788 [45.41]	1.648 [41.85]	1.738 [44.14]				4		1.248 [31.69]		OBSOLETE
530521-5	6	2.908 [73.86]	2.474 [62.54]	2.100 [53.34]	1.960 [49.74]	2.050 [52.07]				5		1.560 [39.62]		OBSOLETE ³
530521-6	8	3.532 [89.71]	3.098 [78.69]	2.724 [69.18]	2.584 [65.63]	2.674 [67.92]				7		2.184 [55.47]		
530521-7	9	3.844 [97.63]	3.410 [86.61]	3.036 [77.11]	2.896 [73.55]	2.986 [75.89]				8		2.496 [63.39]		
530521-8	10	4.156 [105.56]	3.722 [94.54]	3.348 [85.04]	3.208 [81.48]	3.298 [83.77]				9		2.808 [71.32]		OBSOLETE
530521-9	12	4.780 [121.41]	4.346 [110.39]	3.972 [100.89]	3.832 [97.33]	3.922 [99.62]				11		3.432 [87.17]		

△ MEASURE ACROSS MOUNTING EARS. MAY GO TO .020 [0.5] OVER NOMINAL AT TOP OF HOUSING.
2. VOID CORING OPTIONAL.
3. OBSOLETE PARTS: OBSOLETE CIS STREAMLINING PER D.RENAUD/D.SINISI

UNLESS OTHERWISE SPECIFIED DIMENSIONS ARE IN INCHES. TOLERANCES ON: DECIMALS ± ANGLES ±		CONTRACT NO	PART NO	
MATERIAL	DR <i>Diwakar 5-19-75</i>	AMP INCORPORATED Harrisburg, Pa.	NAME	
FINISH	CHKD <i>Diwakar 5-19-75</i>	HOUSING, HIGH CURRENT CONNECTOR		SIZE
	APPD <i>R. Shuman 5/14/75</i>	C	00779	530521
	DSGN APPD	DRAWING NO		SCALE
	OTHER APPD	C		SHEET 2 OF 2

CUSTOMER DRAWING