

DRAWING MADE IN THIRD ANGLE PROJECTION

3

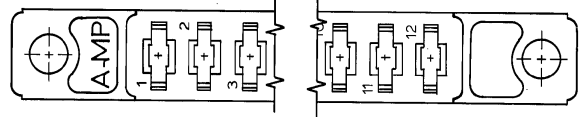
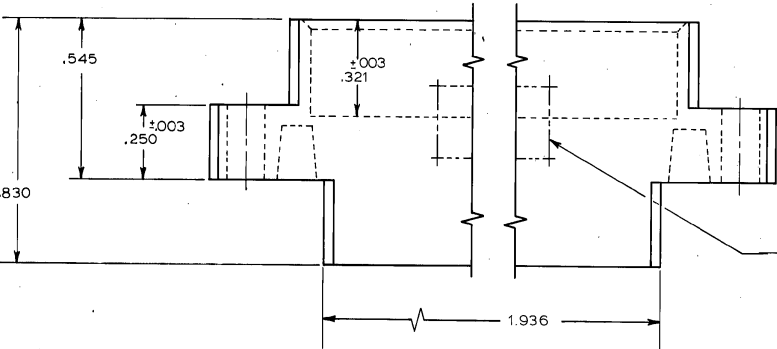
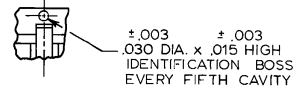
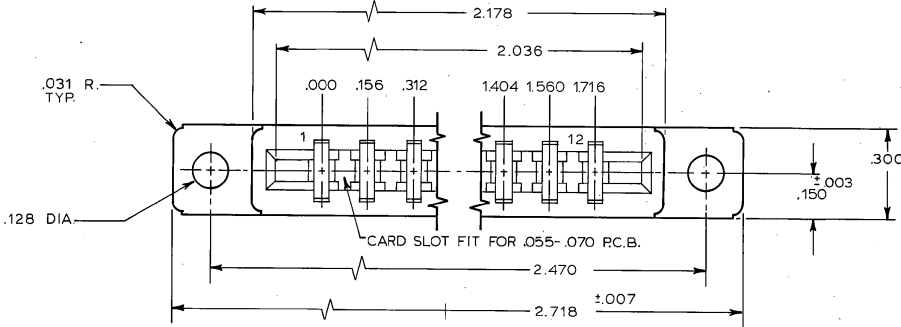
2

1

LOC DIST
AD 00

THIS DRAWING IS UNPUBLISHED. RELEASED FOR PUBLICATION NOVEMBER 8, 1967.
 © COPYRIGHT 1967 BY AMP INCORPORATED, HARRISBURG, PA. ALL INTERNATIONAL RIGHTS RESERVED. AMP PRODUCTS MAY BE COVERED BY U.S. AND FOREIGN PATENTS AND/OR PATENTS PENDING.

REVISIONS						
P	F	ZONE	LTR	DESCRIPTION	DATE	APPROVED
✓			F ₁	REDWNIAD0314	SR 5/4/84	H.W. Rose
			G	REDRAWN PER COIO-1301-94	11/3/94	88/1
			H	REV PER EC 0G3C-233-01	08OCT01	MM



1. USE ON CONTACT KEYING PLUG NO. 583283-1
2. USE CONTACT NO. 583259
3. GLASS FILLED NYLON, COLOR: BLACK, OR GLASS FILLED POLYESTER, COLOR: BLACK.

583300-1		AS SHOWN		
CODE IDENT	DWG SIZE	PART NO OR IDENTIFYING NO	NOMENCLATURE OR DESCRIPTION	
			ITEM NO	
QTY REQD PER ASSY			REVISION OF EACH ASSY NO (WHEN BLANK, USE DWG REVISION)	
UNLESS OTHERWISE SPECIFIED DIMENSIONS ARE IN INCHES			PARTS LIST	
TOLERANCES ON: DECIMALS ±.005 ANGLES ±			CONTRACT NO	
MATERIAL			DR <i>J. Rayneff 5-4-84</i>	
FINISH			CHK <i>H.W. Rose 5/20/84</i>	
OTHER APPD			APPD <i>Howard W. Rose 5/21/84</i>	
SCALE 4:1			APPD <i>E.M. Entwistle 5/22/84</i>	
NAME			AMP AMP INCORPORATED Harrisburg, Pa. 17105	
SIZE C			HOUSING, MODIFIED FORK 12 POS., .156 CENTERS.	
FSCM NO 00779			DRAWING NO 583300	
SHEET 1 OF 1				

CUSTOMER DRAWING

AMP 1471-1 REV 2-81