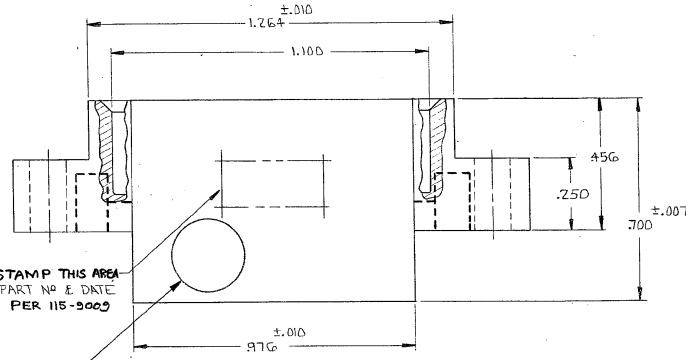
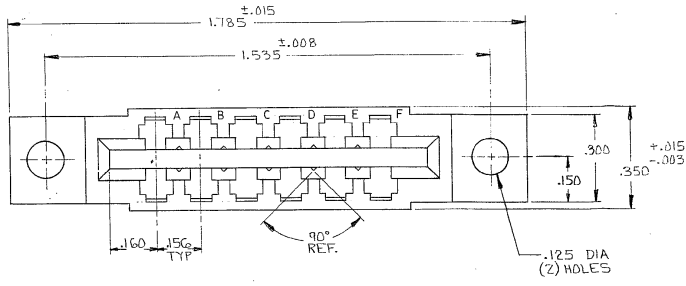


DRAWING MADE IN AMERICAN PROJECTION

© 1977 BY AMP INCORPORATED. ALL RIGHTS RESERVED. AMP PRODUCTS COVERED BY PATENTS AND/OR PATENTS PENDING.

583722-1 WAS SHOWN
~~583722-3 IS SAME AS 1 EXCEPT~~
 WITH SPECIAL MARKING

| REVISIONS | | | | |
|-----------|-----|-----------------------------|------------------|----------|
| ZONE | LTR | DESCRIPTION | DATE | APPROVED |
| | 0 | RELEASED WAS 583722-2 CORR. | J.W. 6-2-77 | |
| | 01 | ADDED -2 | 4178 M.S. 7-3-77 | M.Z. |
| | A | REVISED MAT'L. | 4657 DR 1-9-76 | DR. |
| | B | REVISED NOTE 2 | 7490 *K 8-7-81 | |
| | C | REV PER AD 102 | 3/4/85 | CP |
| | D | REV PER AD 1735 | 7-22-89 | UBW |
| | E | REV PER AD 3180 | 1/89 | WJ/KWK |
| | F | REV PER 0010-0337-95 | 10-19-95 | PF / |
| | G | REV PER EC 0320-349-97 | 25 NOV 97 | NS |

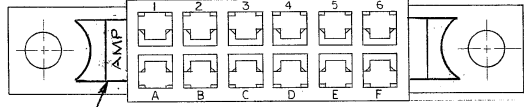


HOT STAMP THIS AREA
 AMP, PART NO & DATE
 CODE PER 115-5000

583722-3 ONLY

1. ACCEPTS .055 TO .070 THICK P.C. BOARD.
 △ .250 ±.015 DIA. WHITE DOT INK STAMPED IN LOWER LEFT
 = HAND CORNER ON EITHER SIDE OF HOUSING

△ VOID CORING PERMISSIBLE AT AMP'S OPTION REF ONLY



| | | | |
|---|-----------------------------|--|---|
| UNLESS OTHERWISE SPECIFIED, DIMENSIONS ARE IN INCHES TOLERANCES ON: DECIMALS ±.005 ANGLES ± .1 | CONTRACT NO. | AMP INCORPORATED HARRISBURG, PENNSYLVANIA | |
| | DR J. H. Whately 6/14/77 | NAME | HOUSING, AMP LEAF, G POSITION, DUAL .156 E |
| | CHK J. Kaufman 6/11/77 | SIZE | CODE IDENT NO. NUMBER |
| | APPR J. Kaufman 6/11/77 | C | 00779 |
| MATERIAL HOUSING: GLASS FILLED NYLON OR POLYESTER COLOR: BLACK | DSGN APPD | SCALE | 583722 |
| | OTHER APPD | | SHEET 1 OF 1 |

CUSTOMER DRAWING

583722