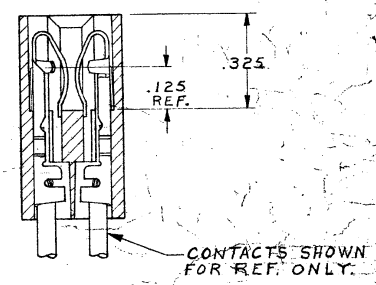
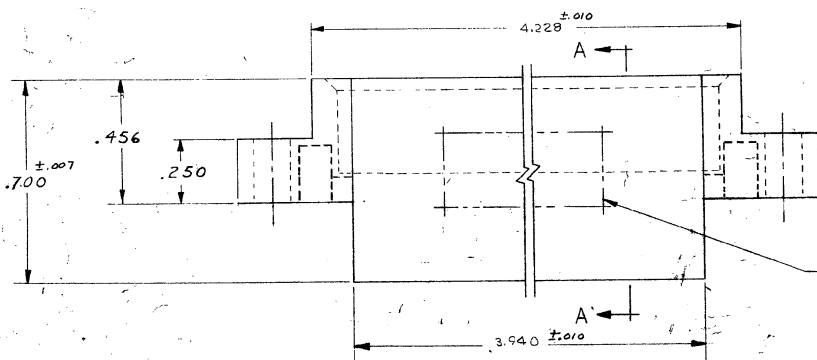
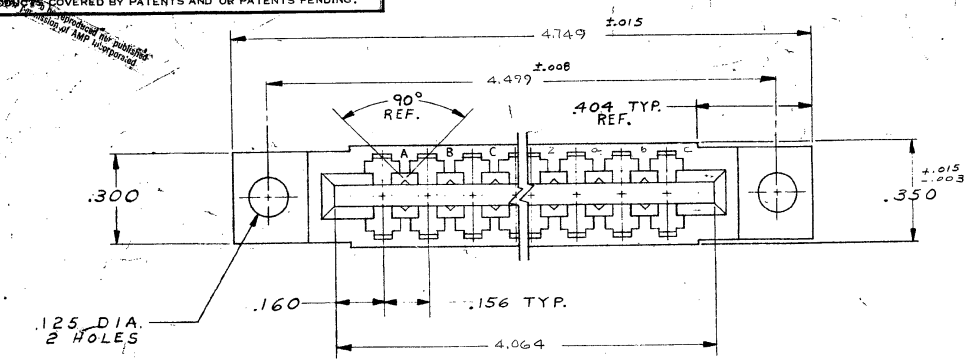


DRAWING MADE IN AMERICAN PROJECTION

© 1971 BY AMP INCORPORATED. ALL RIGHTS RESERVED. AMP PRODUCTS COVERED BY PATENTS AND OR PATENTS PENDING.

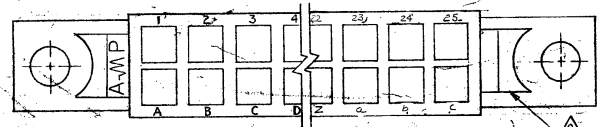
REVISIONS				
ZONE	LTR	DESCRIPTION	DATE	APPROVED
	A	REVISED MATL	4657	DR
	B	REV PER AD0702	5/19/85	RF
	C	REV PER AD 3180	1/89	LD/HWK
	D	REV PER 0010-0337-95	10-12-95	FB
	E	REV PER EC 0320-349-97	12-18-97	NS

583726-1 I. AS SHOWN



AMP, PART NO. & DATE CODE NOT STAMPED IN THIS APPROX. AREA. PER 115-9009

SECT. A-A



1. .055 -.070 P. C. BOARD THICKNESS.  
 ▲ VOID CORING PERMISSIBLE AT AMP'S OPTION REF ONLY

UNLESS OTHERWISE SPECIFIED, DIMENSIONS ARE IN INCHES. TOLERANCES ON DECIMALS ±.005 ANGLES ±  MATERIAL GLASS FILLED NYLON OR POLYESTER COLOR: BLACK	CONTRACT NO.	AMP INCORPORATED HARRISBURG, PENNSYLVANIA	
	DR <i>Rumbell</i>	DATE 5-30-71	NAME HOUSING, AMP LEAF 2.5 POSITION, DUAL
	CHK <i>S. Heide</i>	DATE 5/4/71	SIZE C
	APPD <i>Kaufman</i>	DATE 5/4/71	CODE IDENT NO. 00779
	REV <i>R. Shuman</i>	DATE 5-5-71	NUMBER 583726
DSGN APPD	SCALE 4:1	SHEET 1 OF 1	
OTHER APPD	CUSTOMER DRAWING		