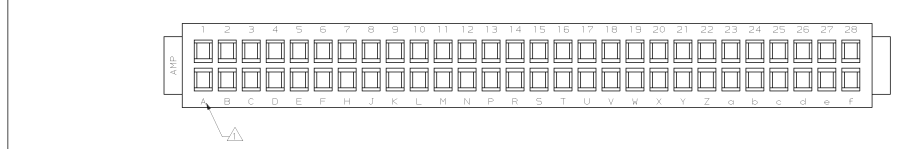
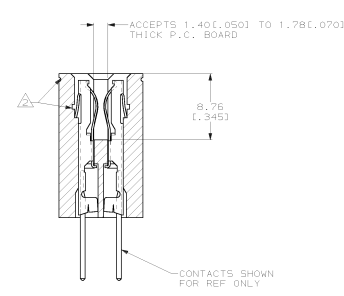
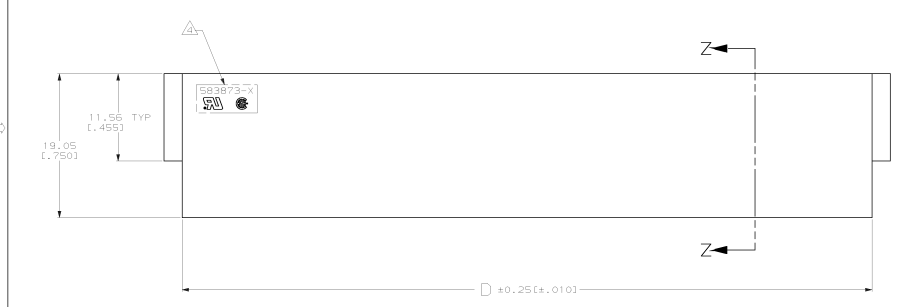
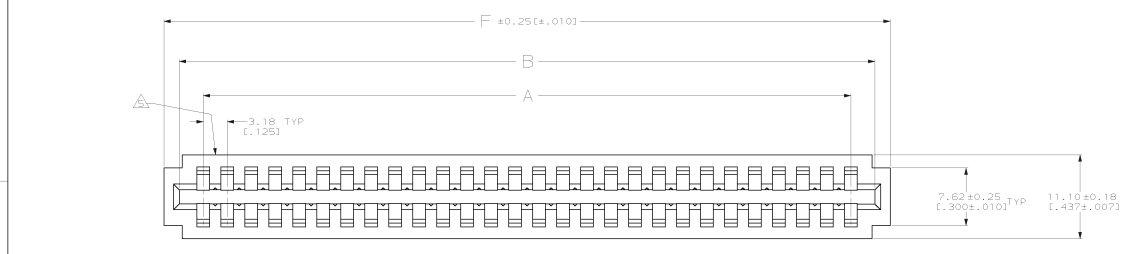


MADE IN CHINA UNDER PROTECTION
 THIS DRAWING IS UNCLASSIFIED
 © COPYRIGHT 19
 RELEASED FOR PUBLICATION
 BY AMP INCORPORATED. ALL INFORMATION RIGHTS RESERVED.

REV	NO	DATE	DESCRIPTION	BY	CHKD
N		010-0052-94	REDRAWN PER	HR	
P		010-0693-94	REVISED PER	HR	
R		010-0812-95	REVISED PER	HR	
S		010-0852-95	REVISED PER	HR	
T		010-0818-95	REVISED PER	HR	
U		0320-349-97	REV PER EC	NS	
V		0052-94-98	REV PER EC	HR	
W		0052-0008-99	REV PER EC	HR	



PART NO.	
DO NOT SCALE PRINT, UNLESS SPECIFIED DIMENSIONS IN MM (INCHES) TOLERANCES: DR - 3 PLS DEC # 0.131(005) MILES #	DR 12-8-92 / J GALLUCCI BG
MATERIAL: GLASS FILLED POLYESTER COLOR: BLACK	CHK 3/4/99 - P ROSE
FINISH: -	APPD 3/4/94 H ROSE
APPLICATION SPEC: -	APPD 3/4/94 H ROSE
DESIGN: -	PRODUCT SPEC: -
SIZE: D	00779
SCALE: 4:1	DRWG NO: 583873
	TITLE: 1 OF 2

AMP Incorporated
 Harrisburg, PA 17105-3608
 HOUSING, CRIMP SNAP
 TWIN LEAF, .125
 WITHOUT MOUNTING EARS

THIS DRAWING IS A CONTROLLED DOCUMENT FOR AMP INCORPORATED. IT IS SUBJECT TO CHANGE AND THE CONTROLLING AND REVISIONS INFORMATION SHOULD BE CONTACTED FOR THE LATEST REVISION.

CUSTOMER DRAWING

