

DRAWING MADE IN THIRD ANGLE PROJECTION

3

2

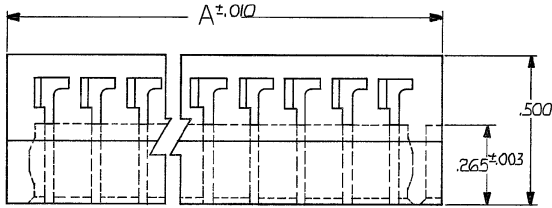
1

LCC DIST ADI 00.

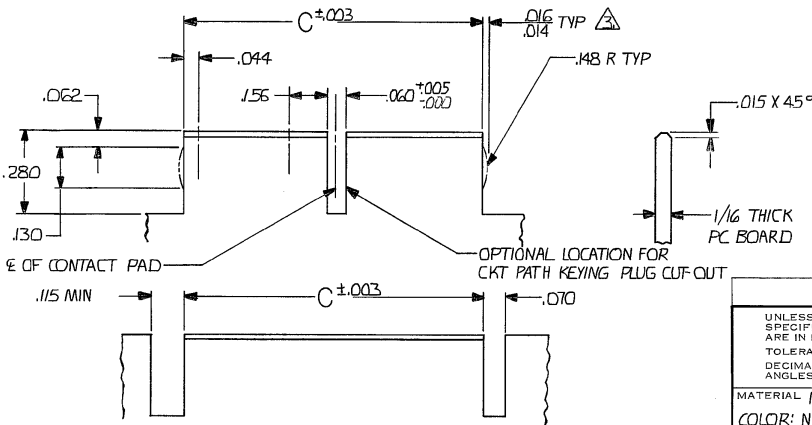
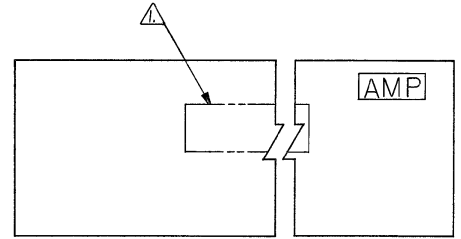
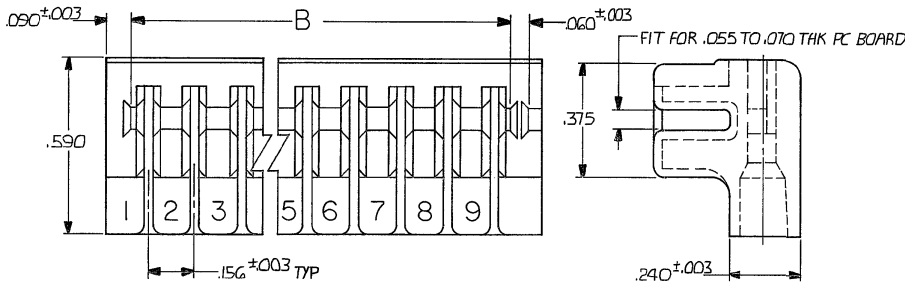
© COPYRIGHT 1976 BY AMP INCORPORATED, HARRISBURG, PA. ALL INTERNATIONAL RIGHTS RESERVED. AMP INCORPORATED PRODUCTS COVERED BY U. S. AND FOREIGN PATENTS AND/OR PATENTS PENDING.

UNPUBLISHED INFORMATION REPRODUCED HEREON WITHOUT WRITTEN PERMISSION OF AMP INCORPORATED.

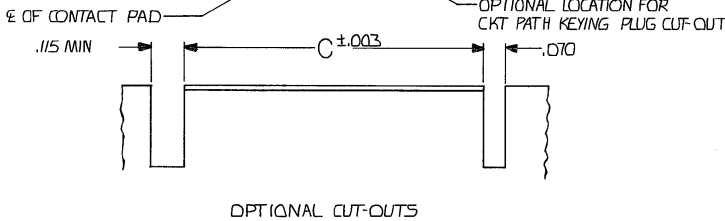
REVISIONS					
P	F	ZONE	LTR	DESCRIPTION	DATE APPROVED
✓			E	OBSELETE -11/0010-1308-93	9/28/88
✓			F	REV PER 0010-0913-99	9/18/86
✓			G	REV PER 0010-1143-95	11-95
			H	REV PER EC 0G3C-233-01	020CT01
			H1	REVISED PER ECO-09-026346	NOV08



1. *AMP* PART NUMBER AND DATE CODE MARKED OR MOLOED THIS AREA. DATE CODE (OPTIONAL)
2. REFER TO 00215 583284 AND 530501 FOR TERMINALS.
3. THE RETAINING DIMPLES ARE OPTIONAL IN BOTH CUT-OUTS.
4. CONTACT CAVITIES ENLARGED FOR 18 TO 16 AWG LEADS WITH MAXIMUM INSULATION DIAMETER OF .130.
5. IDENTIFICATION MARKING OMITTED.
6. OBSELETE PARTS: OBSELETE CIS STREAMLINING PER D.RENAUD/D.SINISI



△	2.741	2.754	2.964	18	1-530853-8
△	400	414	624	3	1-530853-1
△	3.365	3.379	3.588	22	530853-9
△	2.741	2.754	2.964	18	8
△	2.272	2.286	2.496	15	7
△	2.117	2.130	2.340	14	6
△	1.805	1.818	2.028	12	5
	1.337	1.350	1.560	9	4
	868	882	1092	6	3
OBSELETE	712	726	936	5	2
	400	414	624	3	530853-1



UNLESS OTHERWISE SPECIFIED DIMENSIONS ARE IN INCHES.		CONTRACT NO		AMP INCORPORATED Harrisburg, Pa.	
TOLERANCES ON: DECIMALS ±.005 ANGLES		DR Robert Widen 10-13-76 CHK Sweeney 10-13-76			
MATERIAL NYLON COLOR: NATURAL		APPD R.D. Buckley 10-13-76 APPD K. Stewart 10-8-76		NO. OF POSITIONS	
FINISH		OTHER APPD		PART NO	
		SIZE CODE IDENT NO DRAWING NO		REV	
		C 00779 530853		H1	
		SCALE 4:1		SHEET 1 OF 1	

CUSTOMER DRAWING

AMP 1471-6 (7-73)

530853

A