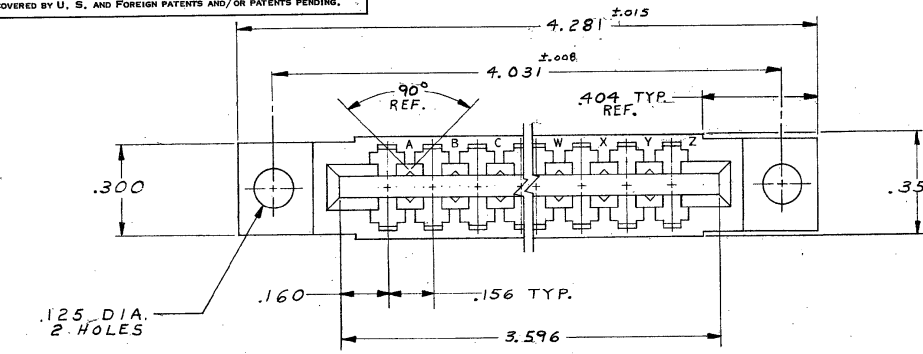


DRAWING MADE IN THIRD ANGLE PROJECTION

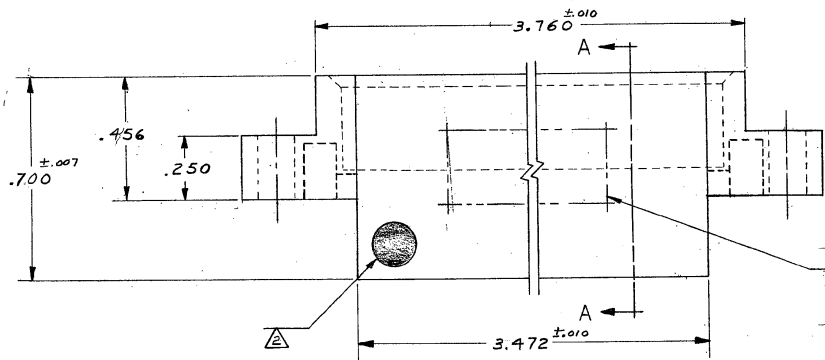
© COPYRIGHT 1970 BY AMP INCORPORATED, HARRISBURG, PA.  
ALL INTERNATIONAL RIGHTS RESERVED. AMP INCORPORATED PRODUCTS  
COVERED BY U. S. AND FOREIGN PATENTS AND/OR PATENTS PENDING.

LOC DIST  
FT 22

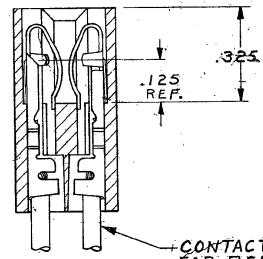
REVISIONS					
P	F	ZONE/LTR	DESCRIPTION	DATE	APPROVED
✓		F	REV PER 0010-0337-95	10-17-94	P.B./
✓		G	REV PER EC 0320-344-97	10-17-94	MS



- 583617-1 1. AS SHOWN.
- 583617-3 1. SAME AS -1 EXCEPT:  
156 DIA. MTG HOLES.
- 583617-6 1. SAME AS -1 EXCEPT:  
WITH SPECIAL MARKING.
- 583617-7 1. SAME AS -3 EXCEPT:  
180 DIA. MTG HOLES.

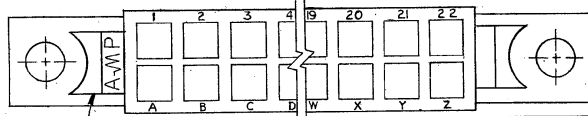


HOT STAMP  
AMP, PART NO. &  
DATE CODE STAMPED  
IN THIS APPROX. AREA,  
ORIENTATION OPTIONAL.  
PER 115-9009.



CONTACTS SHOWN  
FOR REF. ONLY

SECT. A-A



- 1. .055-.070 P.C. BOARD THICKNESS.
- 2. .250 ±.015 DIA. WHITE DOT INK STAMPED IN LOWER  
LEFT HAND CORNER ON EITHER SIDE OF HOUSING.
- 3. VOID CORING PERMISSIBLE AT AMP'S OPTION REF ONLY

UNLESS OTHERWISE SPECIFIED DIMENSIONS ARE IN INCHES. TOLERANCES ON: DECIMALS ±.005 ANGLES ±.1°	CONTRACT NO	AMP INCORPORATED Harrisburg, Pa.	
	DR <i>A.M. SHARPE</i> 11-26-80	NAME	HOUSING, AMP LEAF, 22 POS DUAL
	CHK <i>D. Bushey</i> 12-2-80	SIZE	C 00779
	APPD <i>B.S. Shupe</i> 12-2-80	DRAWING NO	583617
MATERIAL GLASS FILLED NYLON OR POLYESTER COLOR: BLACK	DSGN APPD	SCALE 4:1	SHEET 1 OF 1
FINISH	OTHER APPD	CUSTOMER DRAWING	