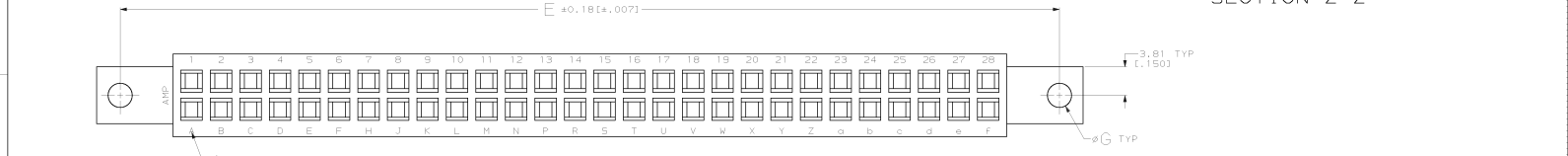
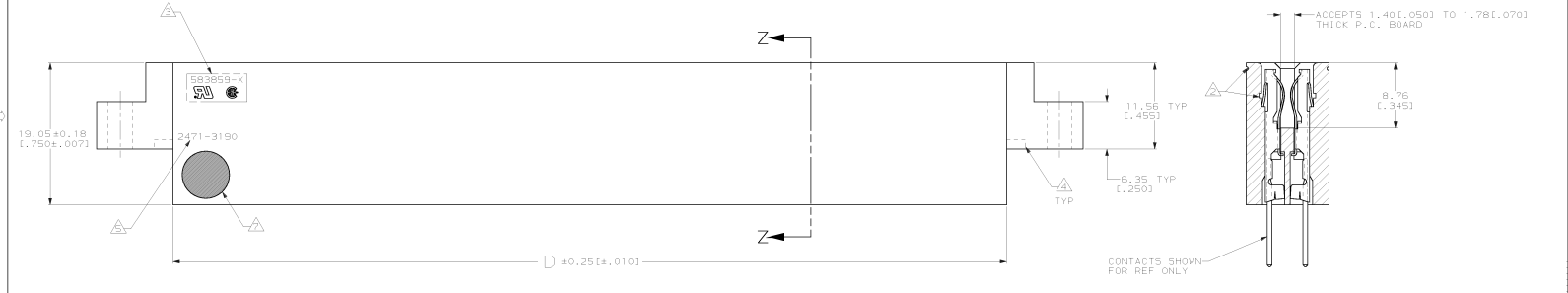
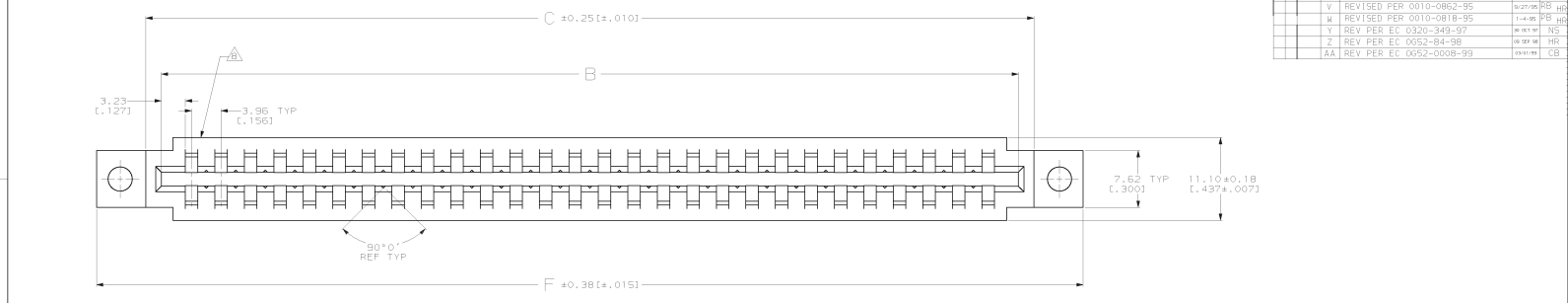


MADE IN CHINA UNDER PROTECTION
 THIS DRAWING IS UNCLASSIFIED
 © COPYRIGHT 19 BY AMP INCORPORATED. ALL INTERNATIONAL RIGHTS RESERVED.

REV	DATE	BY	CHK	APP	DESCRIPTION
S	02/94				REDRAWN PER 0010-0052-94
T	02/94				REVISED PER 0010-0693-94
U	02/94				REVISED PER 0010-0812-95
V	02/94				REVISED PER 0010-0862-95
W	02/94				REVISED PER 0010-0818-95
X	02/94				REV PER EC 0320-349-97
Y	02/94				REV PER EC 0052-94-98
Z	02/94				REV PER EC 0052-0008-99



DO NOT SCALE PRINT. UNLESS SPECIFIED DIMENSIONS IN MM (INCHES) TOLERANCES: DR -		DR 12-10-92		PART NO.	
2 PLE DEC #	0.131(.005)	J	GULLACE BE	AMP Incorporated Harrisburg, PA 17105-3608	
3 PLE DEC #	0.131(.005)	CHR	2/2/92		
FINISH	-	APPD	3/2/94	HOUSING, CRIMP SNAP TWIN LEAF, .156 WITH MOUNTING EARS	
MATERIAL	GLASS FILLED POLYESTER COLOR: BLACK	APPD	3/2/94		
APPLICATION SPEC	-	PRODUCT SPEC	H 100MM	NAME	HOUSING, CRIMP SNAP TWIN LEAF, .156 WITH MOUNTING EARS
SCALE	1:1	DRYING	-	SIZE	
THIS DRAWING IS A CONTROLLED DOCUMENT FOR AMP INCORPORATED. IT IS SUBJECT TO CHANGE AND THE CONTROLLING INDUSTRY ORGANIZATION SHOULD BE CONTACTED FOR THE LATEST REVISION.				D 00779 G=583859	DRAWING NO. G=583859
				SCALE: 1:1 SHEET: 1 OF 2	CUSTOMER DRAWING

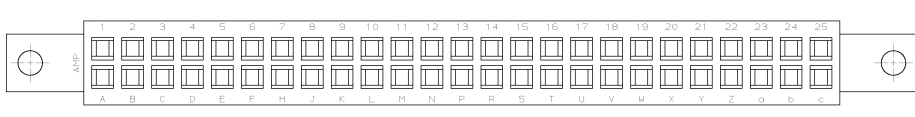
01-MAR-98 11:25:29 amp45875 /home/srv/0260/98401/amp4100/amp45875.dmod

DESIGNED IN THE U.S.A. BY AMP INCORPORATED. ALL INTERNATIONAL RIGHTS RESERVED.
 THIS DRAWING IS UNCLASSIFIED. RELEASED FOR PUBLICATION. © COPYRIGHT 19

REVOLUTIONS		DATE	HRG
AD	00		
AA	SEE SHEET 1		



- △ FIRST 22 POSITIONS MARKED WITH UPPER CASE LETTERS, FOLLOWED BY LOWER CASE LETTERS, FOLLOWED BY UPPERCASE AA, AB, AC ETC. CHARACTERS G, I, O AND Q ARE OMITTED. SEE TABLE FOR END CAVITY IDENTIFICATION.
- △ PULL GROOVES OPTIONAL THESE LOCATIONS REF ONLY.
- △ HOUSING PART NUMBER, UL & CSA LOGO'S TO BE MOLDED IN THIS AREA. UL LOGO PER 1-18838-3, CSA LOGO PER 1-18839-3.
- △ CORING AT AMP'S OPTION REF ONLY.
- △ HOT STAMP CUSTOMER PART NUMBER 2471-3190 IN THIS AREA FOR 1-583859-7 ONLY.
- △ STAMPED WITH SPECIAL CAVITY IDENTIFICATION ON SIDES OF HOUSING.
- △ #6.35±0.38(.250±.015) WHITE DOT IN LOWER LEFT HAND CORNER.
- △ DATE CODE TO BE MOLDED IN THIS AREA



OBSOLETE	10 & L	.128	2,409	2,159	1,600	1,888	1,724	10	2-583859-8
OBSOLETE	14 & R	.128	3,033	2,783	2,224	2,512	2,348	14	2-583859-7
OBSOLETE	25 & C	.128	4,743	4,500	3,940	4,228	4,064	25	2-583859-5
	36 & r	.128	6,465	6,215	5,656	5,944	5,780	36	2-583859-3
	8 & J	.128	2,097	1,847	1,288	1,576	1,412	8	2-583859-1
OBSOLETE	24 & E	.128	4,503	4,243	3,784	4,072	3,908	24	1-583859-9
OBSOLETE	28 & F	.128	5,217	4,967	4,408	4,696	4,532	28	1-583859-7
	12 & N	.128	2,721	2,471	1,912	2,200	2,036	12	1-583859-6
	6 & F	.128	1,785	1,535	.976	1,264	1,100	6	1-583859-3
OBSOLETE	18 & V	.156	3,667	3,407	2,848	3,136	2,972	18	1-583859-11
	10 & L	.128	2,409	2,159	1,600	1,888	1,724	10	583859-8
	15 & S	.128	3,189	2,939	2,380	2,668	2,504	15	583859-7
	18 & V	.128	3,657	3,407	2,848	3,136	2,972	18	583859-5
	22 & Z	.128	4,281	4,031	3,472	3,760	3,596	22	583859-3
	28 & F	.128	5,217	4,967	4,408	4,696	4,532	28	583859-1



2-583859-5

END CAVITY IDENT	G	F	E	D	C	B	POSN	PART NUMBER	
								PART NO.	
DO NOT SCALE PRINT. UNLESS SPECIFIED DIMENSIONS IN MM (INCHES) TOLERANCES: DR ± .3 PLE DEC ± .1 MILLES ± .1				DR 12-10-92 / SALLUCE BE				AMP Incorporated Harrisburg, PA 17105-3608	
FINISH				APPLICATION SPEC				SIZE CASE CODE DRABING NO	
-				-				D 00779 583859	
MATERIAL				PRODUCT SPEC				SCALE 4:1 TRCF 20F2	
-				-				CUSTOMER DRAWING	

01-MAR-98 13:42:59 ag4575E /home/srv/625698401/app4100/ag4575a.dmod