

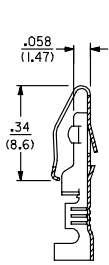
13 12 11 10 9 8 7 6 5 4366 4 3 2 1

J
I
H
G
F
E
D
C
B
A

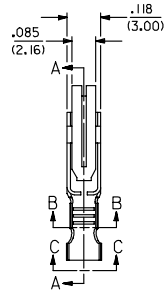
J
I
H
G
F
E
D
C
B
A

NOTES

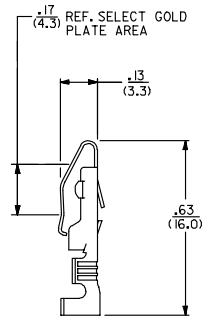
- 1) MATERIAL: BRASS, ALLOY 260, .010/(0.25) THICK.
- 2) FINISH:
 - P555: .000015/(0.00038) MIN. SELECT GOLD OVER .000030/(0.00076) MIN. NICKEL OVERALL.
 - P913: .000100/(0.00254) - .000250/(0.00635) HOT TIN-LEAD DIP.
 - P607: .000050/(0.00127) MIN. SELECT GOLD OVER .000050/(0.00127) MIN. NICKEL OVERALL.
 - P228: .000030/(0.00076) MIN. SELECT GOLD ON CONTACT AREA. .000100/(0.00254) MIN. SELECT MATTE TIN, BOTH OVER .000050/(0.00127) MIN. NICKEL OVERALL.
- 3) PRODUCT SPECIFICATION PS-09-50 APPLIES.
- 4) TERMINAL FOR USE WITH 18-24 AWG WIRE.
- 5) THIS PART CONFORMS TO CLASS B REQUIREMENTS OF COSMETIC SPEC. PS-45499-002 .



SECTION A-A

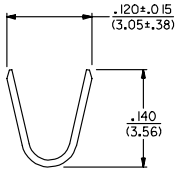


SECTION B-B

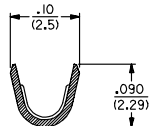


LEGEND

4366-**-**
PLATING (SEE NOTE 2) FORM
BLANK=CHAIN
L=LOOSE



VIEW C-C



2	C1
1	C1
SHT.	REV.

ADD P228 FINISH EC NO: UCP2007-3134 DRAWN BY: ZORWINKLIPPER 2007/06/13 CHECKED BY: CHAKRADER 2007/06/18 APPROVED BY: APPRENTICE 2007/06/19 REV. DESCRIPTION	QUALITY SYMBOLS	GENERAL TOLERANCES (UNLESS SPECIFIED)	DIMENSION STYLE	SCALE	DESIGN UNITS	THIRD ANGLE PROJECTION
	▽=0	4 PLACES ± --- ± ---	IN/MM	4:1	INCH	TERMINAL CRIMP ON
	▽=0	3 PLACES ± --- ± .010	DRAWN BY: ROBERTS DATE: 1991/08/15	TITLE		
		2 PLACES ± 0.25 ± .014	CHECKED BY: PATEL DATE: 1991/08/15	MOLEX INCORPORATED		
	1 PLACE ± 0.35 ± ---	1 PLACE ± 0.35 ± ---	APPROVED BY: LENZ DATE: 1991/08/15	MATERIAL NO.	DOCUMENT NO.	SHEET NO.
	ANGULAR ±1/2°			SEE CHART	SD-4366	1 OF 2
DRAFT WHERE APPLICABLE MUST REMAIN WITHIN DIMENSIONS		THIS DRAWING CONTAINS INFORMATION THAT IS PROPRIETARY TO MOLEX INCORPORATED AND SHOULD NOT BE USED WITHOUT WRITTEN PERMISSION				

12 11 10 9 8 7 6 5 4 3 2 1

COLUMN NO. 1			COLUMN NO. 2			COLUMN NO. 3			COLUMN NO. 4		
PART NO.	ENG. NO.	REF.	PART NO.	ENG. NO.	REF.	PART NO.	ENG. NO.	REF.	PART NO.	ENG. NO.	REF.
08-03-0304	4366-P913L										
08-03-0303	4366-P913										
08-05-0302	4366-P555L	ES-150-*									
08-05-0301	4366-P555	ES-150-*									
08-05-0305	4366-P607	ES-150-*									
50-36-1873	4366-P228	ES-150-*									

COLUMN NO. 1	CON'T. IN COLUMN NO.	SHEET NO.	COLUMN NO. 2	CON'T. IN COLUMN NO.	SHEET NO.	COLUMN NO. 3	CON'T. IN COLUMN NO.	SHEET NO.	COLUMN NO. 4	CON'T. IN COLUMN NO.	SHEET NO.																					
ADD P/N 50-36-1873			EC NO. UCP2007-3134 2007/06/13 DRWNSKI PPR 2007/06/18 CHACADER 2007/06/18 APPRESMITH 2007/06/19			QUALITY SYMBOLS ▽=0 ▽=0			GENERAL TOLERANCES (UNLESS SPECIFIED) <table border="1"> <tr> <td></td> <td>mm</td> <td>INCH</td> </tr> <tr> <td>4 PLACES</td> <td>±---</td> <td>±---</td> </tr> <tr> <td>3 PLACES</td> <td>±---</td> <td>±---</td> </tr> <tr> <td>2 PLACES</td> <td>±---</td> <td>±---</td> </tr> <tr> <td>1 PLACE</td> <td>±---</td> <td>±---</td> </tr> </table> ANGULAR ±1/2°				mm	INCH	4 PLACES	±---	±---	3 PLACES	±---	±---	2 PLACES	±---	±---	1 PLACE	±---	±---	DIMENSION STYLE IN/MM DRAWN BY ROBERTS DATE 1991/08/28 CHECKED BY DATE PATEL 1991/08/28 APPROVED BY LENZ DATE 1991/08/28			SCALE --- DESIGN UNITS INCH THIRD ANGLE PROJECTION		
	mm	INCH																														
4 PLACES	±---	±---																														
3 PLACES	±---	±---																														
2 PLACES	±---	±---																														
1 PLACE	±---	±---																														
DRAFT WHERE APPLICABLE MUST REMAIN WITHIN DIMENSIONS			MATERIAL NO. SEE CHART SIZE C			DOCUMENT NO. SD-4366 SHEET NO. 2 OF 2			MOLEX INCORPORATED THIS DRAWING CONTAINS INFORMATION THAT IS PROPRIETARY TO MOLEX INCORPORATED AND SHOULD NOT BE USED WITHOUT WRITTEN PERMISSION																							