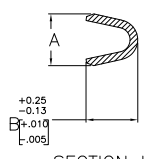
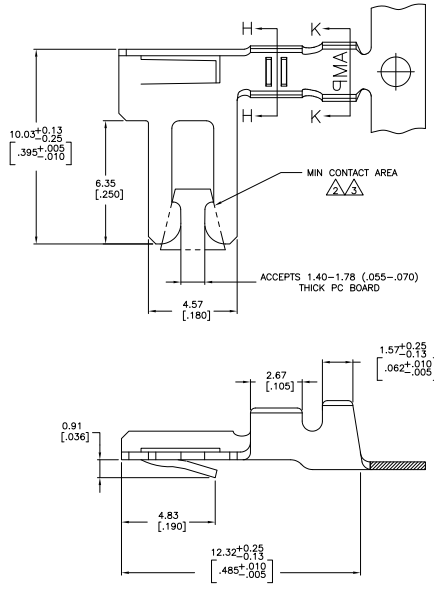
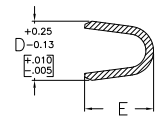


THIS DRAWING IS UNPUBLISHED  
 ALL RIGHTS RESERVED  
 © 2008 BY TTI ELECTRONICS CORPORATION

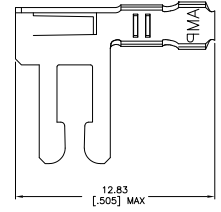
REV	DATE	DESCRIPTION	BY	CHK
AK	ECC-05-004683		20/AMK	BSV/MM
AK1	REVISED PER ECC-09-020774		21/AMG09	KK/AEG



SECTION H-H



SECTION K-K



DETAIL X  
SCALE 6:1

- REFER TO CUSTOMER DRAWINGS 530509, 530853, 582370, & 582380 FOR HOUSING AND PC BOARD REQUIREMENTS.
- 0.76 μm[0.00030] MIN GOLD OVER 1.27 μm[0.00050] MIN NICKEL IN CONTACT AREA, 1.27 μm[0.00050] MIN NICKEL ON REMAINDER OF CONTACT.
- 0.38 μm[0.00030] MIN GOLD OVER 1.27 μm[0.00050] MIN NICKEL IN CONTACT AREA, 1.27 μm[0.00050] MIN NICKEL ON REMAINDER OF CONTACT.
- 3.81 μm[0.00150] MIN TIN-LEAD OVER 0.76 μm[0.00030] MIN NICKEL ALL OVER.
- FOR USE WITH STANDARD APPLICATOR.
- FOR USE WITH MINATURE APPLICATOR.
- 3.81 μm[0.00150] MIN MATTE TIN PLATE OVER 0.76 μm[0.00030] MIN NICKEL ALL OVER.
- OBsolete PARTS: OBsolete CIS STREAMLINING PER D.RENAUD/D.SINISI

△	OBsolete	0.89-1.40 [0.35-0.55]	26-22	2.16 [0.85]	2.54 [1.00]	1.90 [0.75]	1.90-2.41 [0.75-0.95]	PER DETAIL-X	-	△	5-66150-2
△	OBsolete	1.52-2.29 [0.60-0.90]	22-18	3.56 [1.40]	3.05 [1.20]	2.67 [1.05]	2.67-3.30 [1.05-1.30]	PER DETAIL-X	-	△	5-66088-2
		0.89-1.40 [0.35-0.55]	26-22	2.16 [0.85]	2.54 [1.00]	1.90 [0.75]	1.90-2.41 [0.75-0.95]	-	△	△	5-66362-1
		1.52-2.29 [0.60-0.90]	22-18	3.56 [1.40]	3.05 [1.20]	2.67 [1.05]	2.67-3.30 [1.05-1.30]	-	△	△	5-66335-2
△	OBsolete	1.52-2.29 [0.60-0.90]	22-18	3.56 [1.40]	3.05 [1.20]	2.67 [1.05]	2.67-3.30 [1.05-1.30]	-	△	△	5-60215-4
		0.89-1.40 [0.35-0.55]	26-22	2.16 [0.85]	2.54 [1.00]	1.90 [0.75]	1.90-2.41 [0.75-0.95]	PER DETAIL-X	-	△	66150-2
		1.52-2.29 [0.60-0.90]	22-18	3.56 [1.40]	3.05 [1.20]	2.67 [1.05]	2.67-3.30 [1.05-1.30]	PER DETAIL-X	-	△	66088-2
		0.89-1.40 [0.35-0.55]	26-22	2.16 [0.85]	2.54 [1.00]	1.90 [0.75]	1.90-2.41 [0.75-0.95]	-	△	△	66362-2
		0.89-1.40 [0.35-0.55]	26-22	2.16 [0.85]	2.54 [1.00]	1.90 [0.75]	1.90-2.41 [0.75-0.95]	-	△	△	66362-1
△	OBsolete	1.52-2.29 [0.60-0.90]	22-18	3.56 [1.40]	3.05 [1.20]	2.67 [1.05]	2.67-3.30 [1.05-1.30]	-	△	△	66335-3
		1.52-2.29 [0.60-0.90]	22-18	3.56 [1.40]	3.05 [1.20]	2.67 [1.05]	2.67-3.30 [1.05-1.30]	-	△	△	66335-2
		1.52-2.29 [0.60-0.90]	22-18	3.56 [1.40]	3.05 [1.20]	2.67 [1.05]	2.67-3.30 [1.05-1.30]	-	△	△	60215-5
		1.52-2.29 [0.60-0.90]	22-18	3.56 [1.40]	3.05 [1.20]	2.67 [1.05]	2.67-3.30 [1.05-1.30]	-	△	△	60215-4

INSULATION DIA RANGE	WIRE GAUGE RANGE	E	D	B	A	LOOSE PIECE	REELING	FINISH	PART NUMBER

THIS DRAWING IS A CONTROLLED DOCUMENT. TTI ELECTRONICS CORPORATION  
 108-9016  
 114-9002  
 CUSTOMER DRAWING  
 CONTACT, DUO-TYME TM FLAG  
 100779 G=60215  
 TTI ELECTRONICS CORPORATION  
 Harrisburg, Pa 17105-3608