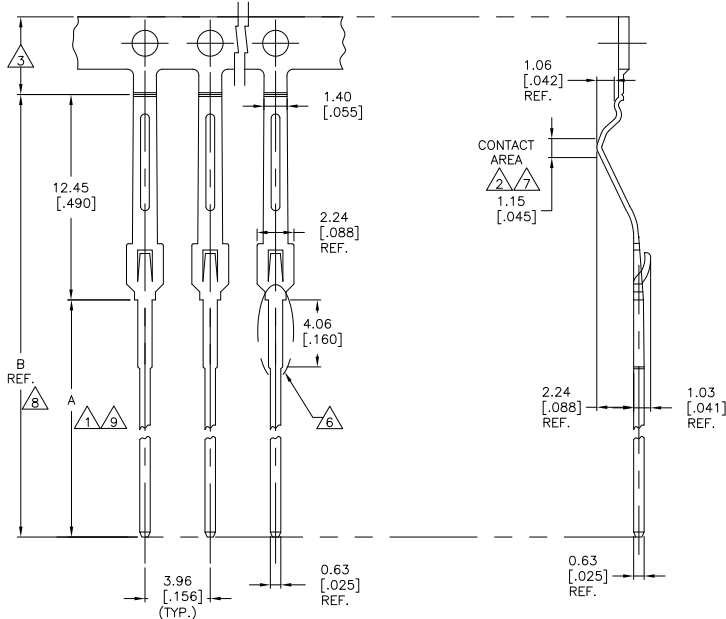
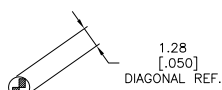


THIS DRAWING IS UNPUBLISHED. RELEASED FOR PUBLICATION. BY TYCO ELECTRONICS CORPORATION. ALL RIGHTS RESERVED.

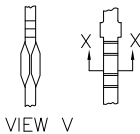
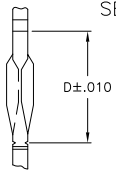
| LOC | DIST | REVISIONS | | | | |
|-----|------|-----------|-----|-----------------------------|---------|--------|
| AD | 14 | F | LNK | DATE | BY | APP'D |
| | | K | | REVISED PER EC 063C-0205-05 | DEMARDG | GS MM |
| | | K1 | | REVISED PER ECO-09-020932 | 01SEP09 | KK AEG |



- 1 GOLD PLATE PER MIL-O-45204 .000001 MIN. THK. OVER NICKEL PLATE.
- 2 GOLD PLATE PER MIL-G-45204 .000015 MIN. THK. OVER NICKEL PLATE.
- 3 PLATING IS NOT RREQUIRED ON CARRIER STRIP.
- 4. POST DIAGONAL .0310/.0350 AFTER PLATING
- 5. QUANTITY PER REEL-25,000
- 6 ACTION PIN AREA.
- 7 GOLD PL. PER MIL-G-45204 .000030 MIN. THK. OVER NICKEL PL.
- 8 GOLD PL. PER QQ-N-290 .000050 MIN. THK.
- 9 SOLDER PL. .000100 MIN. THK. OVER NICKEL PL.
- 10 MATTE TIN PL. .000100 MIN. THK. OVER NICKEL PL.
- 11 OBSOLETE PARTS: OBSOLETE CIS STREAMLINING PER D.RENAUD/D.SINISI



SECTION "X"-"X"



NOTE:
REFER TO AMP SPEC. 106-14018 OR 106-14019, AS APPLICABLE FOR SPECIFIC HOLE SIZE RECOMMENDATIONS.

OBSOLETE

| COMB NO. | DETAIL C(D) | FINISH | B | A | PART NO. |
|----------|-------------|----------|------|------|------------|
| 119328 | -.160 | UNPLATED | .965 | .475 | 7-117285-3 |
| 119328 | -.160 | UNPLATED | .965 | .475 | 6-117285-8 |
| 119328 | -.160 | UNPLATED | .965 | .475 | 2-117285-7 |
| 119328 | -.160 | UNPLATED | .965 | .475 | 2-117285-5 |
| 119328 | -.160 | UNPLATED | .965 | .475 | 2-117285-4 |
| 119328 | -.160 | UNPLATED | .965 | .475 | 2-117285-3 |
| 119328 | -.160 | UNPLATED | .965 | .475 | 2-117285-2 |
| 119328 | -.160 | UNPLATED | .965 | .475 | 2-117285-1 |
| 119328 | -.160 | UNPLATED | .965 | .475 | 2-117285-0 |
| 119328 | -.160 | UNPLATED | .965 | .475 | 2-117285-9 |
| 119328 | -.160 | UNPLATED | .965 | .475 | 1-117285-8 |
| 119328 | -.160 | UNPLATED | .965 | .475 | 1-117285-7 |
| 119328 | -.160 | UNPLATED | .965 | .475 | 1-117285-5 |
| 119328 | -.160 | UNPLATED | .965 | .475 | 1-117285-2 |

| COMB NO. | DETAIL C(D) | FINISH | B | A | PART NO. |
|----------|-------------|----------|------|------|------------|
| 119328 | -.160 | UNPLATED | .965 | .475 | 7-117285-3 |
| 119328 | -.160 | UNPLATED | .965 | .475 | 6-117285-8 |
| 119328 | -.160 | UNPLATED | .965 | .475 | 2-117285-7 |
| 119328 | -.160 | UNPLATED | .965 | .475 | 2-117285-5 |
| 119328 | -.160 | UNPLATED | .965 | .475 | 2-117285-4 |
| 119328 | -.160 | UNPLATED | .965 | .475 | 2-117285-3 |
| 119328 | -.160 | UNPLATED | .965 | .475 | 2-117285-2 |
| 119328 | -.160 | UNPLATED | .965 | .475 | 2-117285-1 |
| 119328 | -.160 | UNPLATED | .965 | .475 | 2-117285-0 |
| 119328 | -.160 | UNPLATED | .965 | .475 | 2-117285-9 |
| 119328 | -.160 | UNPLATED | .965 | .475 | 1-117285-8 |
| 119328 | -.160 | UNPLATED | .965 | .475 | 1-117285-7 |
| 119328 | -.160 | UNPLATED | .965 | .475 | 1-117285-5 |
| 119328 | -.160 | UNPLATED | .965 | .475 | 1-117285-2 |

THIS DRAWING IS A CONTROLLED DOCUMENT.

DIMENSIONS: mm [INCHES]

TOLERANCES UNLESS OTHERWISE SPECIFIED:

| | | | |
|---|-----|---|-------|
| Ø | PLC | ± | — |
| 1 | PLC | ± | — |
| 2 | PLC | ± | — |
| 3 | PLC | ± | .010 |
| 4 | PLC | ± | ± .5° |
| 5 | PLC | ± | ± .5° |

MATERIAL: COPPER-NICKEL-TIN ALLOY STRIP
COVER ALLOY: Ni72Sn
SPRING TEMPER

FINISH: 1, 2, 7, 8, 9

THIS DRAWING IS A CONTROLLED DOCUMENT.

DIN: —
OK: —
ZPK: —
NAME: Tyco Electronics Corporation
Harrisburg, Pa 17105-3608

PRODUCT SPEC: —
APPLICATION SPEC: —
WEIGHT: —

SIZE: A2
CASE CODE: 00779
DRAWING NO: 117285

CUSTOMER DRAWING

SCALE: 6:1
SHEET: 1 OF 1
REV: K1