

4

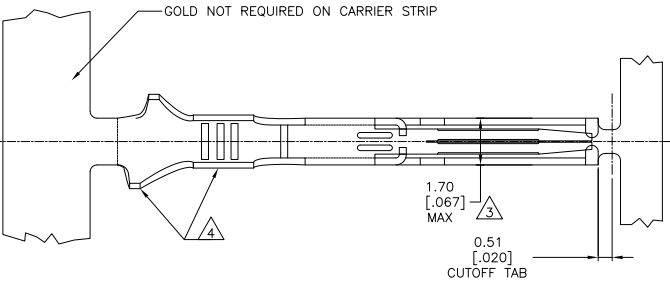
3

2

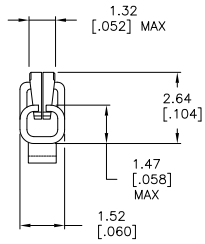
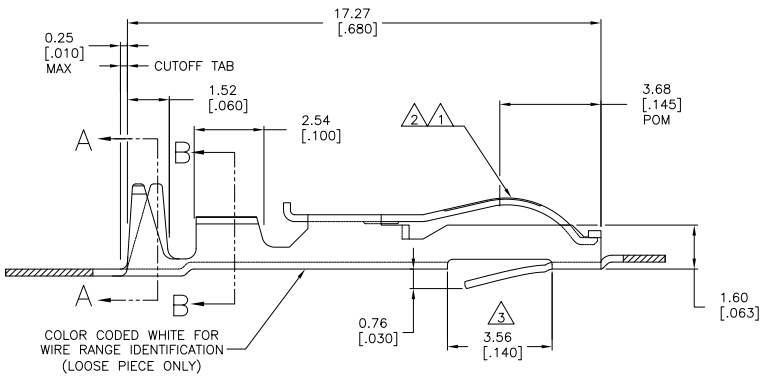
1

THIS DRAWING IS UNPUBLISHED. RELEASED FOR PUBLICATION. BY TYCO ELECTRONICS CORPORATION. ALL RIGHTS RESERVED.

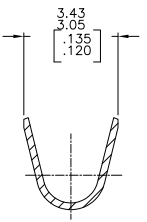
LOC	DIST	REVISIONS			
F	LNK	DESCRIPTION	DATE	BY	APP'D
AD	00	N1	REVISED PER ECO-10-000443	15JAN10	KK AEG



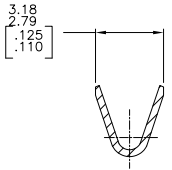
- 1 .000050 GOLD OVER .000050 NICKEL IN CONTACT AREA. REMAINDER OF CONTACT GOLD FLASH OVER NICKEL.
- 2 .000030 GOLD OVER .000030 NICKEL IN CONTACT AREA. REMAINDER OF CONTACT GOLD FLASH OVER NICKEL.
- 3 .067 MAX ALLOWED IN LOCKING LATCH AREA FOR .140 REF LENGTH.
- 4 TIN-LEAD IN CRIMP AREA.
- 5 OBSOLETE
- 6 CRIMP TWIN LEAF CONTACTS WITH 20-16 AWG WIRE RANGE TO BE USED ONLY WITH .125CL & 156 CL CRIMP TWIN LEAF HOUSINGS.
- 7 TIN IN CRIMP AREA.



COLOR CODED WHITE FOR WIRE RANGE IDENTIFICATION (LOOSE PIECE ONLY)



SECTION A-A
INSULATION RANGE
.073-.090 DIA



SECTION B-B
WIRE RANGE
#16-#20

5-583875-5	-	2 7	5-583875-6
583875-5	-	2 4	583875-6
583875-2	583875-4	1	583875-3
STRIP PART # REELING LEFT TO RIGHT	STD REELING RIGHT TO LEFT	FINISH	LOOSE PIECE

THIS DRAWING IS A CONTROLLED DOCUMENT.

DIMENSIONS: mm [INCHES]	TOLERANCES UNLESS OTHERWISE SPECIFIED:	0 PLG ± .010	1 PLG ± .005	2 PLG ± .005	3 PLG ± .005	4 PLG ± .005	ANGLES ± .5°
MATERIAL: PHOS BRONZE	FINISH: SEE TABLE	APP'D: H. ROSE	CHK: H. ROSE	DATE: 07MAR94	NAME: H. ROSE	PRODUCT SPEC: -	APPLICATION SPEC: -
CUSTOMER DRAWING		SIZE: A2	QTY: 00779	DRW NO: C-583875	SCALE: 10:1	SHEET: 1 of 1	REV: N1

Ytyco Electronics Corporation
Harrisburg, PA 17105-3608

CONTACT-TWIN LEAF (CRIMP-SNAP)

583875

A