

4

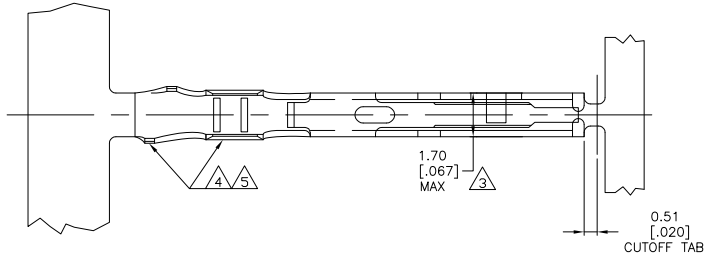
3

2

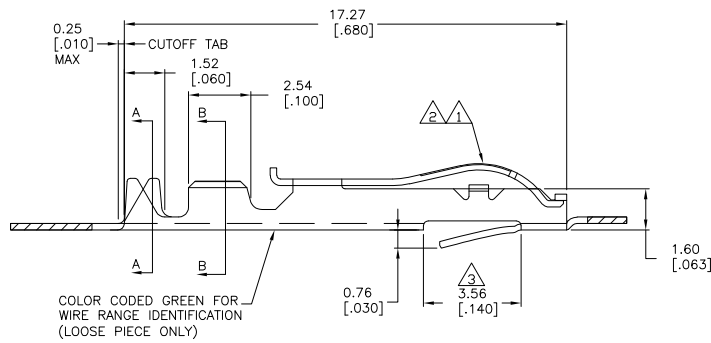
1

THIS DRAWING IS UNPUBLISHED. RELEASED FOR PUBLICATION
 BY TYCO ELECTRONICS CORPORATION. ALL RIGHTS RESERVED.

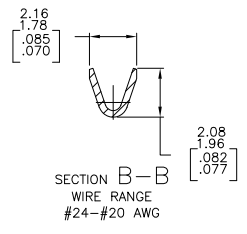
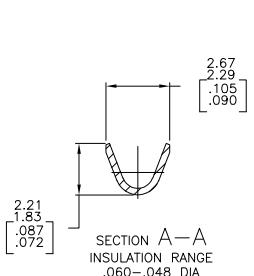
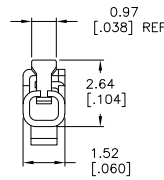
LOC	DIST	REVISIONS		
F	LTR	DESCRIPTION	DATE	BY
AD	00			
J		ECO 05 003616	05APR06	BSV



- 1 .000030 GOLD OVER .000030 NICKEL IN CONTACT AREA.
- 2 .000015 GOLD OVER .000030 NICKEL IN CONTACT AREA.
- 3 .067 MAX ALLOWED IN LOCKING POSITION AREA FOR .140 REF LENGTH.
- 4 TIN-LEAD IN CRIMP AREA.
- 5 MATTE TIN PLATE IN CRIMP AREA.



COLOR CODED GREEN FOR WIRE RANGE IDENTIFICATION (LOOSE PIECE ONLY)



1 5	5-531477-5	5-531477-4
2 5	5-531477-3	5-531477-2
1 4	531477-5	531477-4
2 4	531477-3	531477-2
FINISH	LOOSE PIECE	PART NUMBER

THIS DRAWING IS A CONTROLLED DOCUMENT.

DIMENSIONS: mm [INCHES]	TOLERANCES UNLESS OTHERWISE SPECIFIED:	0 PLC ± .01	1 PLC ± .02	2 PLC ± .03	3 PLC ± .04	4 PLC ± .05	ANGLES ± .5°
MATERIAL: PHOS BRONZE	FINISH: SEE TABLE	APPROVED: H. ROSE	DATE: 05/04/06	PRODUCT SPEC: ---	APPLICATION SPEC: ---	WEIGHT: ---	SIZE: A2

Customer Drawing: 10:1 SCALE, 1 OF 1 SHEET, REV J

531477

A