

4

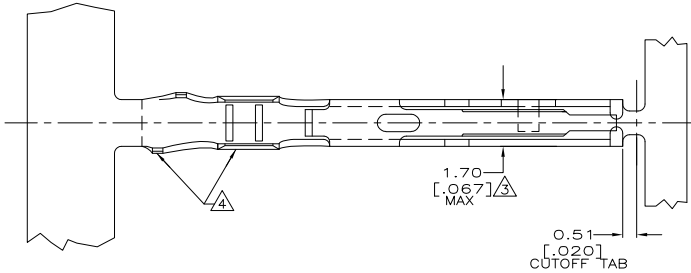
3

2

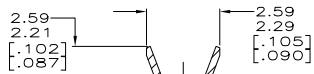
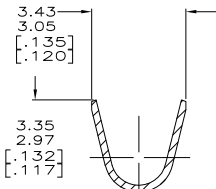
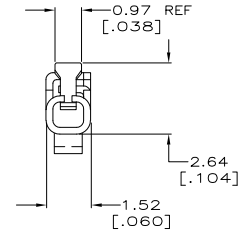
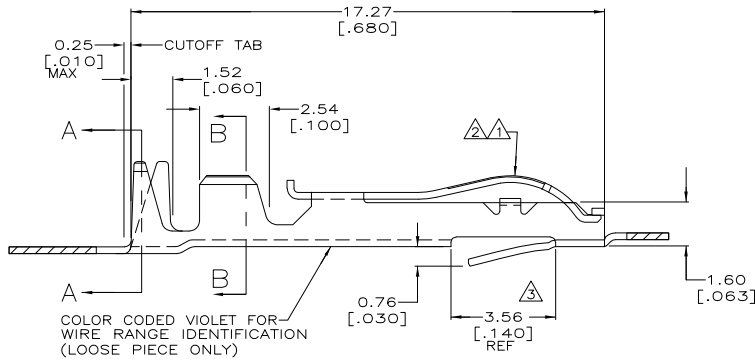
1

THIS DRAWING IS UNPUBLISHED.  
 RELEASED FOR PUBLICATION  
 BY TYCO ELECTRONICS CORPORATION. ALL RIGHTS RESERVED.

LOC	DIST	REVISIONS		
F	LTR	DESCRIPTION	DATE	BY
AD	00			
M		ECO-05-003616	31MAY2006	RB



- △ .000030 GOLD OVER .000030 NICKEL IN CONTACT AREA.
- △ .000015 GOLD OVER .000030 NICKEL IN CONTACT AREA.
- △ .067 MAX ALLOWED IN LOCKING POSITION AREA FOR .140 REF LENGTH.
- △ TIN-LEAD IN CRIMP AREA.
- △ OBSOLETE
- △ MATTE TIN IN CRIMP AREA.



SECTION B-B  
 WIRE RANGE  
 #22-#18 AWG

△△	531478-5	5-531478-4
△△	531478-5	531478-4
△△	531478-3	△ 531478-2
FINISH	LOOSE PIECE	PART NUMBER

THIS DRAWING IS A CONTROLLED DOCUMENT.		8-2-93	Tyco Electronics Corporation Harrisburg, PA 17105-3608	
DIMENSIONS: mm [INCHES]		A STAUB, BG	CONTACT, NON-BIFURCATED CRIMP TWIN LEAF	
TOLERANCES UNLESS OTHERWISE SPECIFIED:		OK ROSE	SIZE: A2	
0 PLG ±		2/8/94	CAGE CODE: 00779	
1 PLG ±			DRAWING NO: C=531478	
2 PLG ±			RESTRICTED TO	
3 PLG ±	.005		-	
4 PLG ±	.010		SCALE: 10:1	
ANGLES ±	°		SHEET: 1 of 1	
MATERIAL: PHOS BRONZE	FINISH: SEE TABLE	CUSTOMER DRAWING	REV: M	

AMP 1471-9 REV 31MM2000

531478

A