

4

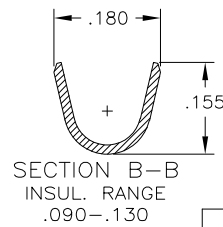
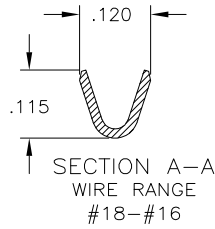
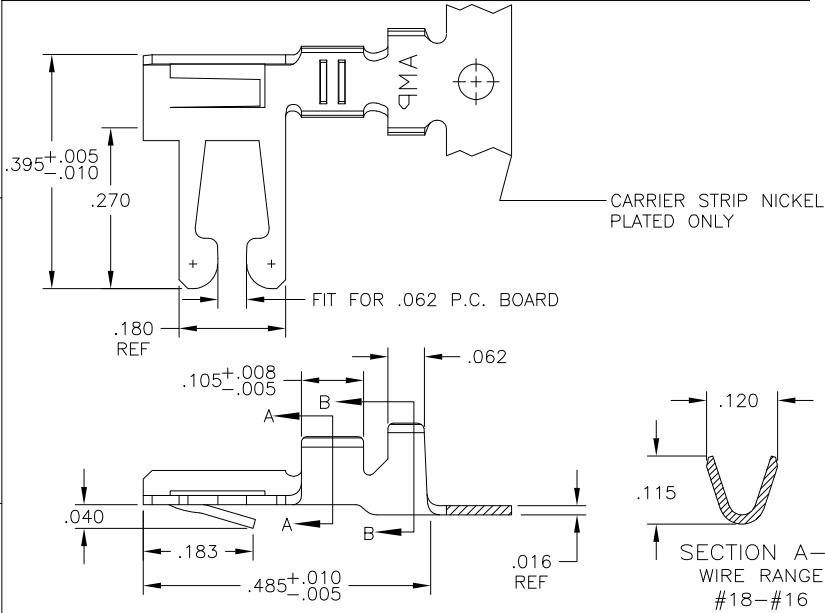
3

2

1

THIS DRAWING IS UNPUBLISHED. RELEASED FOR PUBLICATION
 © COPYRIGHT - BY TYCO ELECTRONICS CORPORATION. ALL RIGHTS RESERVED.

LOC	DIST	REVISIONS			
P	LTR	DESCRIPTION	DATE	DWN	APVD
AD	00	F1	ECO-05-014547	21APR2006	RB MM



1. TO BE USED IN HOUSING WITH INSULATION CAVITY SIZE OF .125 X .155.

- 2 .000030 GOLD OVER .000050 NICKEL IN CONTACT AREA. .000050 NICKEL ON REMAINDER OF CONTACT.
- 3 .000015 GOLD OVER .000050 NICKEL IN CONTACT AREA. REMAINDER OF CONTACT .000050 NICKEL.
- 4 L-R FEED FOR MINI-APPL.

FINISH	PART NUMBER
MATTE TIN PLATE	4 530505-8
OBSOLETE	3 4 530505-7
OBSOLETE	2 4 4 530505-6
TIN PLATE	4 530505-5
OBSOLETE	3 530505-4
OBSOLETE	2 530505-3
OBSOLETE	TIN PLATE 530505-2

THIS DRAWING IS A CONTROLLED DOCUMENT.		DWN M. BINNER 03APR01	Tyco Electronics Corporation Harrisburg, PA 17105-3608	
DIMENSIONS: INCHES		CHK M. MILLER 05APR01	NAME	
TOLERANCES UNLESS OTHERWISE SPECIFIED:		APVD M. MILLER 05APR01	CONTACT, 22-18 AWG, DUO-TYNE FLAG WITH TAPERED BEAMS	
0 PLC ± -		PRODUCT SPEC	RESTRICTED TO	
1 PLC ± -		APPLICATION SPEC	SIZE A3	CAGE CODE 00779
2 PLC ± -		WEIGHT	DRAWING NO C-530505	REV F1
3 PLC ± .005		CUSTOMER DRAWING	SCALE 6:1	SHEET 1 OF 1
4 PLC ± .0005				
ANGLES ± -				
MATERIAL PHOS BRONZE	FINISH SEE TABLE			