

4

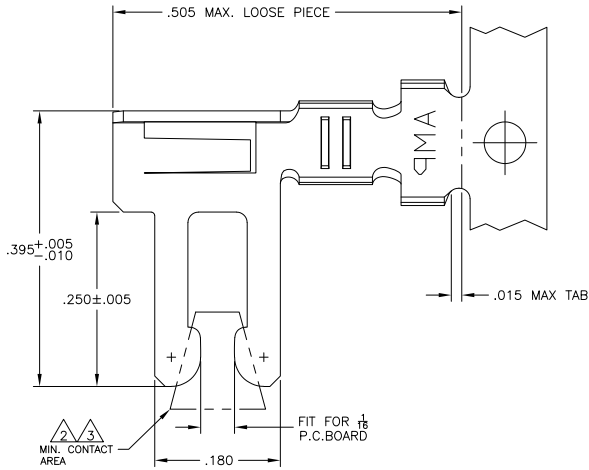
3

2

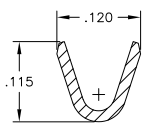
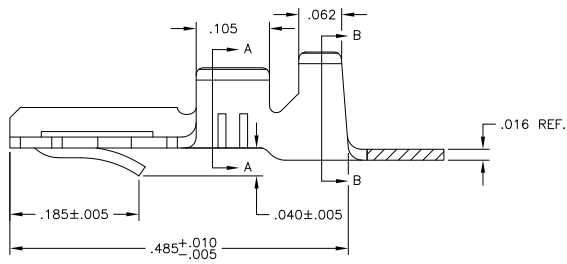
1

THIS DRAWING IS UNPUBLISHED. RELEASED FOR PUBLICATION
 © COPYRIGHT BY TYCO ELECTRONICS CORPORATION. ALL RIGHTS RESERVED.

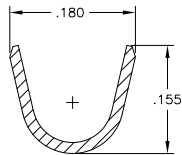
LOC	DIST	REVISIONS					
AD	00	P	L/R	DESCRIPTION	DATE	MIN	APD
		M		ECO-07-10819	09MAY07	MB	MM



- △1 TO BE USED IN HOUSING WITH INSULATION CAVITY SIZE OF .128x.155
- △2 .000030 GOLD OVER .000050 NICKEL IN CONTACT AREA .000050 NICKEL ON REMAINDER OF CONTACT.
- △3 .000015 GOLD OVER .000050 NICKEL IN CONTACT AREA REMAINDER OF CONTACT .000050 NICKEL.



SECT. A-A
WIRE RANGE
#18-#16



SECT. B-B
INS. RANGE
.090-.130

OBSOLETE				
L,R FEED FOR MINI-APPL.	L.P.NO:REF.	FINISH	MATERIAL	STRIP P/N, R-L FEED STD. REELING
5-530501-5	5-530502-1	TIN PLATE OVER NICKEL	PHOS. BRONZE	-
OBSOLETE 530501-7	530502-3	△3	PHOS. BRONZE	530501-4
OBSOLETE 530501-6	530502-2	△2	PHOS. BRONZE	530501-3
530501-5	530502-1	TIN/LEAD PL OVER NICKEL	PHOS. BRONZE	530501-2

THIS DRAWING IS A CONTROLLED DOCUMENT.		DIN -		Tyco Electronics Corporation	
DIMENSIONS: INCHES		OK - M. MILLER 110CT05		Harrisburg, Pa 17105-3608	
OTHER DIMENSIONS: MILLIMETERS		APD - M. MILLER 110CT05		DUO-TYNE FLAG CONTACT	
MATERIAL: SEE TABLE		FINISH: SEE TABLE		18-16 AWG, WIRE	
APPLICATION SPEC: -		SIZE: A2		CAGE CODE: 00779	
WEIGHT: -		DRAWING NO: C-530501		RESTRICTED TO: -	
CUSTOMER DRAWING		SCALE: 10:1		SHEET 1 OF 1 REV M	

AMP 1471-9 REV 31MM2000

530501

A