

4

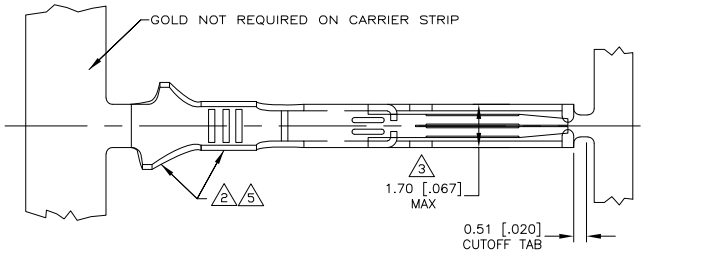
3

2

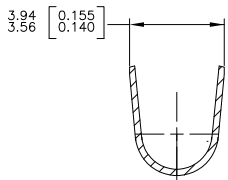
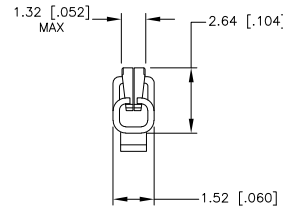
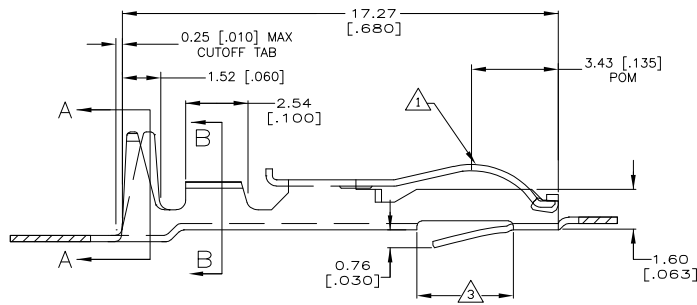
1

THIS DRAWING IS UNPUBLISHED. RELEASED FOR PUBLICATION
 © COPYRIGHT BY TYCO ELECTRONICS CORPORATION. ALL RIGHTS RESERVED.

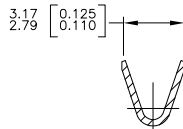
LOC	DIST	REVISIONS					
GP	00	P	LTR	DESCRIPTION	DATE	MIN	APD
		A		RELEASED PER EC 0512-0017-05	03 JUN 05	AWF	AWF



- 1 0.76 μm [.000030] MIN GOLD OVER 0.76 μm [.000030] MIN NICKEL IN CONTACT AREA.
- 2 MATTE TIN PLATE IN CRIMP AREA.
- 3 .067 MAX ALLOWED IN LOCKING LANCE AREA.
- 4. REEL QUANTITY = 7000 PIECES.



SECTION A-A
 INSULATION RANGE
 .100-.121 DIA



SECTION B-B
 WIRE RANGE
 #20-16

1	2	5147431-2
FINISH	PART	

THIS DRAWING IS A CONTROLLED DOCUMENT.		DIM AL FRANTUM 03 JUN 05 OK AL FRANTUM 03 JUN 05 APD NAME PRODUCT SPEC APPLICATION SPEC WEIGHT CUSTOMER DRAWING	Tyco Electronics Corporation Harrisburg, Pa 17105-3608 CONTACT, CRIMP-SNAP, 20-16 AWG, TWIN LEAF SIZE CAGE CODE DRAWING NO A2 00779 C-5147431 SCALE 10:1 SHEET 1 OF 1 REV A	RESTRICTED TO - A
----------------------------------------	--	--------------------------------------------------------------------------------------------------------------------------------------	-----------------------------------------------------------------------------------------------------------------------------------------------------------------------------------------------	-------------------------

AMP 1471-9 REV 31MM2000

5147431

B

A