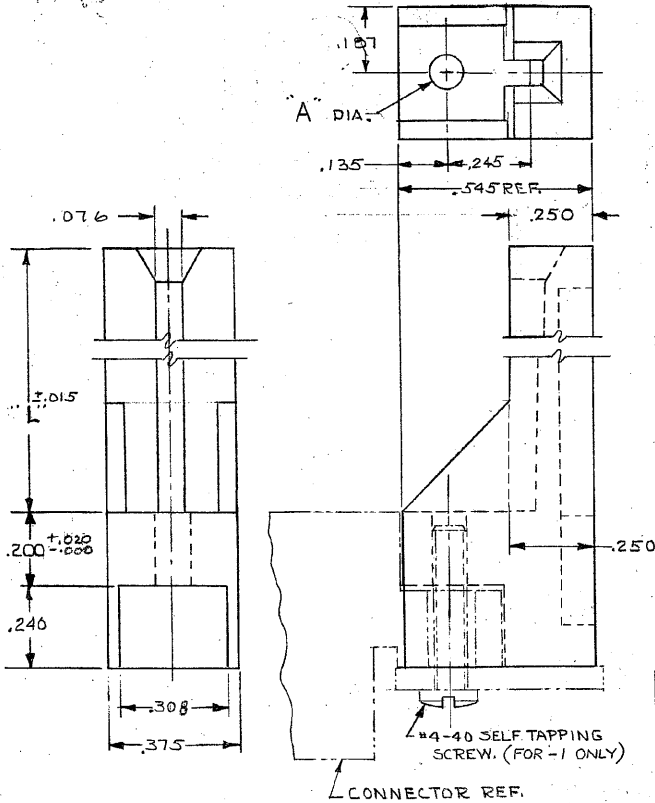


DRAWINGS MADE IN AMERICAN PROJECTION

© 1970 BY AMP INCORPORATED. ALL RIGHTS RESERVED. AMP PRODUCTS COVERED BY PATENTS AND/OR PATENTS PENDING.

REVISIONS

| ZONE | LTR | DESCRIPTION | DATE | APPROVED |
|------|-----|-----------------------------------|-----------|----------|
| | 0 | RELEASED, WAS 3112-255-1 CUST. JW | 6-7-71 | JW |
| | O1 | ADDED - 2 3155 AC | 7-71 | JH |
| | A | REVISED 3924 m.s. | 3-72 | JH |
| | B | REVISED PER ECN 4001 RW | 1-10-74 | MZ |
| | B1 | ADDED - 3, - 4 4125 M.S. | 5-24-74 | MZ |
| | C | REVISED MATL. 4657 DR | 1-9-76 | DE, M.S. |
| | C1 | ADDED - 5 6567 AMB | 3-17-80 | |
| | C2 | REV PER AD1089 | 2-7-86 | |
| | D | OBSOLETE - 2 & - 4 PER AD1831 | 3-22-88 | LS |
| ✓ | E | REV PER AD 3565 | 9/89 | LLW |
| ✓ | F | REV PER EC 0320-349-97 | 24 NOV 97 | MS |



| | | | |
|----------|------|-------|----------|
| 583760-5 | .093 | 2.710 | OBSOLETE |
| 583760-4 | .144 | | OBSOLETE |
| 583760-3 | .093 | 2.750 | OBSOLETE |
| 583760-2 | .144 | 4.000 | OBSOLETE |
| 583760-1 | .093 | | |
| PART NO. | "A" | "L" | |

| | | | |
|--|--|---|--|
| UNLESS OTHERWISE SPECIFIED DIMENSIONS ARE IN INCHES TOLERANCES ON: DECIMALS ±.005 ANGLES ±.005 | | CONTRACT NO. | |
| DR. <i>Donald</i> 11-19-70 | | AMP INCORPORATED HARRISBURG, PENNSYLVANIA | |
| CHK. <i>W. Heide</i> 6-4-71 | | NAME | |
| APP. <i>R. Korman</i> 6-9-71 | | CARD GUIDE, AMP LEAF | |
| REC. <i>S. Shurman</i> 6-7-71 | | SIZE CODE IDENT NO. NUMBER | |
| DSGN APPD | | B 00779 583760 | |
| OTHER APPD | | SCALE 4:1 SHEET 1 OF 1 | |

AMP 1470-1 REV (7/88) 4

CUSTOMER DRAWING