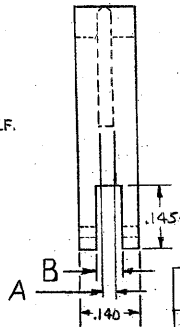
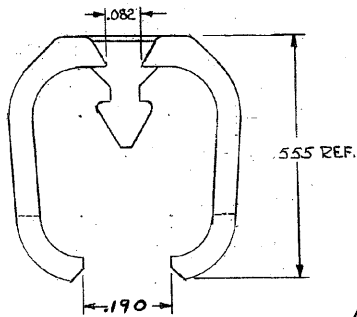
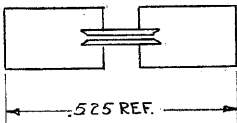


DRAWING MADE IN THIRD ANGLE PROJECTION

© COPYRIGHT 1974 BY AMP INCORPORATED, HARRISBURG, PA.
 ALL INTERNATIONAL RIGHTS RESERVED BY AMP INCORPORATED PRODUCTS
 COVERED BY U. S. AND FOREIGN PATENTS AND/OR PATENTS PENDING.

Unpublished copy not to be reproduced
 without written permission of AMP Incorporated.

		REVISIONS				
Δ	F	ZONE	LTR	DESCRIPTION	DATE	APPROVED
		0		RELEASED 5193-324-1	m.s.	4-28-75
		0/		ADDED - 2 WAS 5193-324-2 4517	m.s.	7-27-75 m.s. DR.
		A		REVISED	5043 m.s.	1-17-77
		B		REV PER AD4842		8/90 CP/HWR
		C		REV PER EC 0380-209-97		7-1-77 NS



OBSOLETE

INTERCONTACT KEY FOR .100 & CONN.; USE INSERTION TOOL 910B1-2	.040	.033 .028	530286-3
INTER CONTACT KEY FOR .125, .150 & .156 & CONN.; USE INSERTION TOOL 910B1-1	.050	.048 .043	530286-2
INTER CONTACT KEY FOR .100 & CONN.; USE INSERTION TOOL 910B1-2	.040	.033 .028	530286-1
REMARKS	"B"	"A"	PART NO

UNLESS OTHERWISE SPECIFIED DIMENSIONS ARE IN INCHES: TOLERANCES ON: DECIMALS ± ANGLES ±	CONTRACT NO	AMP INCORPORATED Harrisburg, Pa.
	DR <i>Shank</i> 12-12-74	
MATERIAL	CHK <i>Shank</i> 4-22-75	NAME KEYING PLUG, TWIN LEAF CONNECTOR
FINISH	APPD <i>Kaufman</i> 4-23-75	SIZE B
	DSGN APPD	CODE IDENT NO 00779
	OTHER APPD	DRAWING NO 530286
		SCALE
		SHEET 1 OF 1

CUSTOMER DRAWING