

DRAWING MADE IN AMERICAN PROJECTION

4

3

2

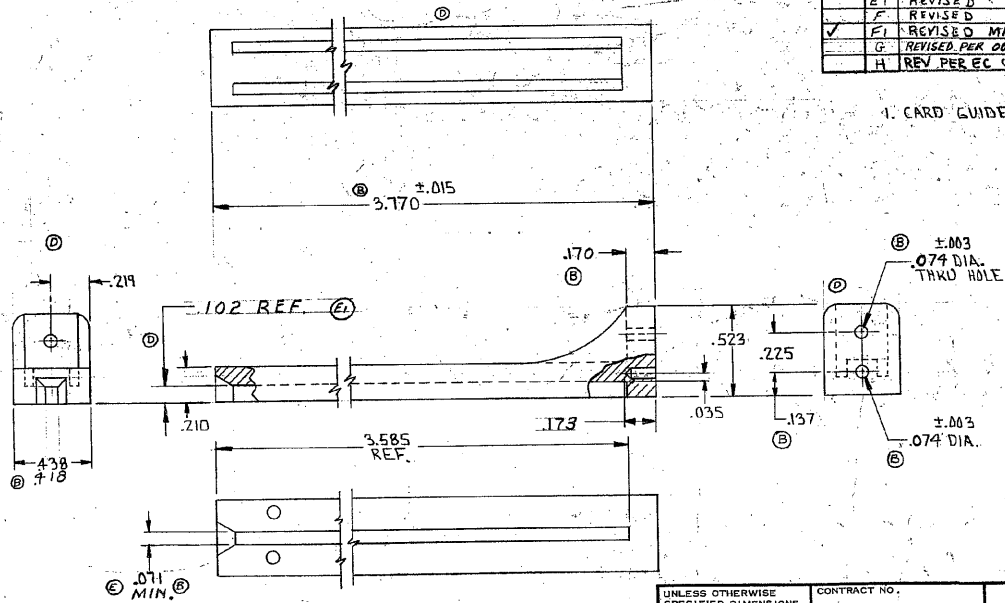
1

ALL RIGHTS RESERVED. AMP
BY AMP INCORPORATED. ALL RIGHTS RESERVED. AMP
PENDING PATENTS AND/OR PATENTS PENDING.
No reproduction or publication
without permission of Amp Incorporated

583671-1 I.A.S. SHOWN

REVISIONS				
ZONE	LEADER	DESCRIPTION	DATE	APPROVED
D		RELEASED WAS 572-231-2	JUL 11-29-70	NH
A		REVISED 2849	M.S. 7-14-71	NH
B		REVISED 3000	M.S. 5-6-71	NH
C		REVISED MATL. 3230	M.S. 5-21-71	NH
D		REVISED 3257	M.S. 11-12-71	NH
E		REVISED 3325	M.S. 1-17-72	NH
E1		REVISED 4375	M.S. 2-19-75	DR
F		REVISED 4690	M.S. 2-11-76	BR
F1		REVISED MATL. 5328	M.S. 11-10-77	
G		REVISED PER 0010-0636-75	6-30-95	AS
H		REV PER EC 0320-209-97	7-1-97	NS

1. CARD GUIDE ACCEPTS #2 SELF TAPPING SCREW



GLASS FILLED NYLON OR GLASS FILLED
POLYESTER, COLOR BLACK OR BROWN

UNLESS OTHERWISE SPECIFIED DIMENSIONS ARE IN INCHES TOLERANCES ON: DECIMALS ±.005 ANGLES ±.1	CONTRACT NO.	AMP	
	DATE	AMP INCORPORATED HARRISBURG, PENNSYLVANIA	
	MATERIAL	NAME	CARD GUIDE
	DESIGN APPD	SIZE	CODE IDENT NO.
	OTHER APPD	B	00779
		NUMBER	583671
		SCALE	SHEET 1 OF 1

CUSTOMER DRAWING

PRINT DATE 22