

REV. X

DIMENSIONS ARE IN INCHES		TOLERANCES ARE:	
ONE PLACE DECIMALS ± .1	THREE PLACE DECIMALS ± .005	ANGLES	± 2°
TWO PLACE DECIMALS ± .01	FOUR PLACE DECIMALS ± .0020		

TITLE: DUAL ROW 2mm x 2mm ASSEMBLY
 DWG NO: TLE-1XX-XX-X-DV-X
 SHEET 1 OF 2

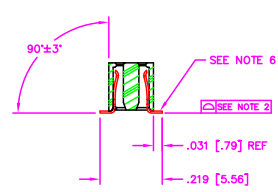
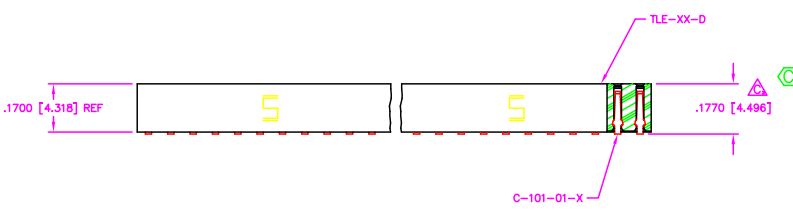
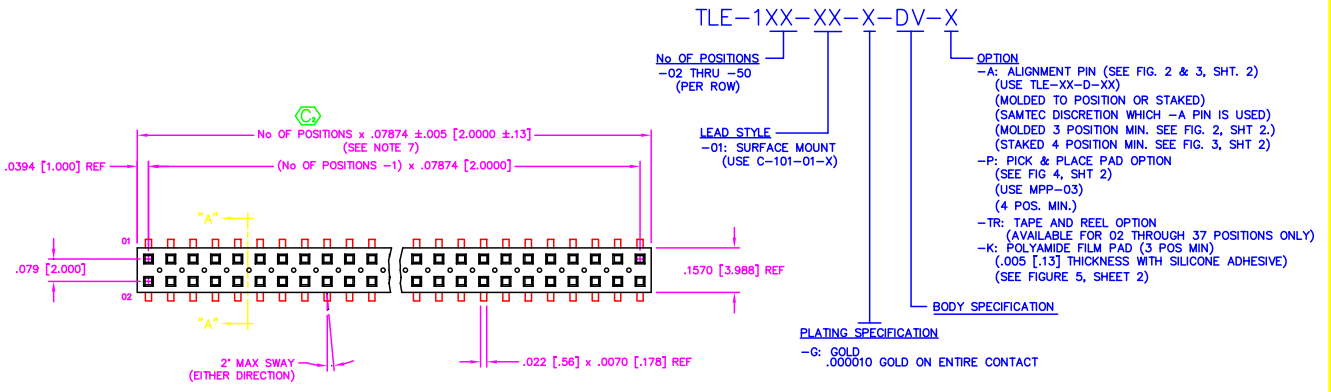


FIG. 1

SECT. "A-A"

- NOTES:
1. MINIMUM PUSHOUT FORCE: .4 lb.
 2. COPLANARITY; POS -02 THRU -26: .004
POS -27 THRU -50: .006
 3. Ⓢ REPRESENTS A CRITICAL DIMENSION
 4. ALL POSITIONS TO BE PACKAGED IN TUBES.
 5. FOR EVERY FINISHED PART, ONE POSITION WILL BE LOST WHEN CUTTING BODY TO LENGTH.
 6. BURR ALLOWANCE: .003 [.08] MAX
 7. CUT FLASH TO BE .010 [.25] MAX WITH NO FLASH ALLOWED IN HOLES OR EXTENDING BELOW LEADS.

PATENT NUMBERS
 5713755 / 5961339

DO NOT SCALE FROM THIS PRINT.

PROPRIETARY NOTE
 THIS DOCUMENT CONTAINS INFORMATION CONFIDENTIAL AND PROPRIETARY TO SAMTEC INC. AND SHALL NOT BE REPRODUCED OR TRANSMITTED IN ANY FORM OR BY ANY MEANS, ELECTRONIC OR MECHANICAL, INCLUDING PHOTOCOPYING, RECORDING, OR BY ANY INFORMATION STORAGE AND RETRIEVAL SYSTEM, WITHOUT THE EXPRESS WRITTEN CONSENT OF SAMTEC INC.

MATERIAL:
 BODY:
 VECTRA E130I
 COLOR: BLACK
 TERMINAL:
 PHOSPHER BRONZE
 PLOT SCALE 1=2

MISC\MKTD\TLE-MKT

520 PARK EAST BLVD. NEW ALBANY, INDIANA 47150
 PHONE (812) 944-6733 P.O. BOX 1147
 CODE 55322

MADE BY: D PURVIS 01-20-97 TLE-1XX-XX-X-DV-X
 SHEET 1 OF 2