

SMS-1XX-XX-XX-D

**BODY LENGTH SPECIFICATION**  
-01 THRU -50 POSITIONS

**CONTACT SPECIFICATION**  
(SEE TABLE 1)  
USE SPECIFIED LEAD STYLE TO IDENTIFY CONTACT

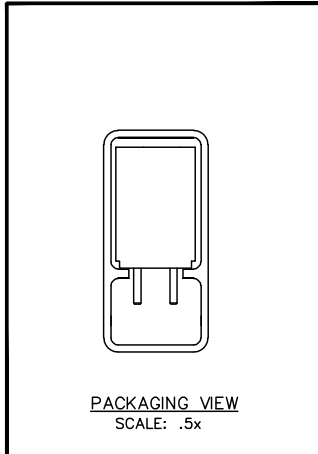
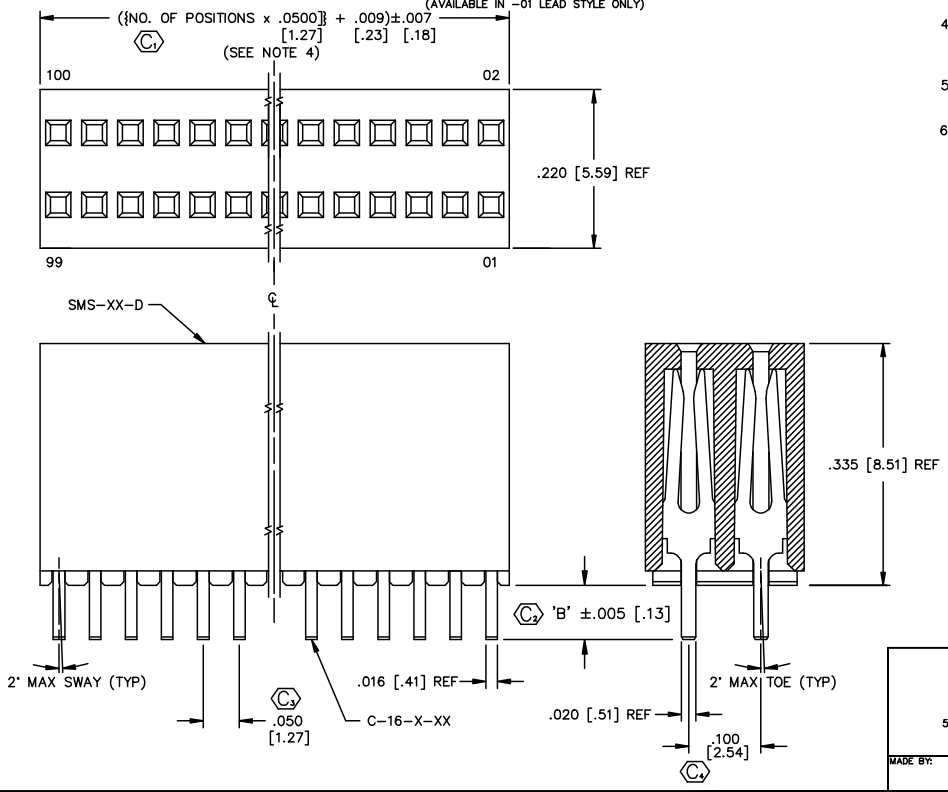
**BODY SPECIFICATION**  
-D: DOUBLE ROW (USE SMS-50-D)

**PLATING SPECIFICATION**  
-G: GOLD (SPECIFY G IN CONTACT SUFFIX 'X')  
-T: TIN (SPECIFY T IN CONTACT SUFFIX 'X')  
-S: SELECTIVE (SPECIFY S IN CONTACT SUFFIX 'X')  
-F: FLASH SELECTIVE GOLD (SPECIFY F IN CONTACT SUFFIX 'X') (AVAILABLE IN -01 LEAD STYLE ONLY)  
-H: HEAVY GOLD (SPECIFY H IN CONTACT SUFFIX 'X')  
-TM: MATTIE TIN (SPECIFY T IN CONTACT SUFFIX 'X')  
-SM: SELECTIVE GOLD, MATTIE TIN TAIL (SPECIFY S IN CONTACT SUFFIX 'X')  
-FM: FLASH SELECTIVE GOLD, MATTIE TIN TAIL (SPECIFY F IN CONTACT SUFFIX 'X') (AVAILABLE IN -01 LEAD STYLE ONLY)

TABLE 1

LEAD STYLE	CONTACT	'B'	PKG TUBE (SEE NOTE 5)	PLUG
01	C-16-1-XX	.100 [2.54]	PT-SMS001-D	TP-03
02	C-16-2-XX	.190 [4.83]		

- NOTES:
- MAX. BOWING AFTER ASSEMBLY: .006 [.15] INCH/INCH
  - MAX. FLASH: .005 [.13]
  - Ⓢ REPRESENTS A CRITICAL DIMENSION FOR STATISTICAL PROCESS CONTROL USE.
  - PARTS CUT TO POSITION SHOULD BE SYMMETRICAL ABOUT  $\phi$ . END WALLS OF CUT BODIES SHALL BE .012 [.30] MIN. WHEN MEASURED AT CONTACT TAIL.
  - PACKAGE ONLY POSITIONS 10 THROUGH 50 IN TUBES. BOX PACKAGE POSITIONS 01 THROUGH 09.
  - CONTACT PUSHOUT FORCE: 1.5 LBS. MIN



**PROPRIETARY NOTE**  
THIS DOCUMENT CONTAINS INFORMATION CONFIDENTIAL AND PROPRIETARY TO SAMTEC INC. AND SHALL NOT BE REPRODUCED OR TRANSMITTED IN ANY FORM OR BY ANY MEANS, ELECTRONIC OR MECHANICAL, INCLUDING PHOTOCOPYING, RECORDING, OR BY ANY INFORMATION STORAGE AND RETRIEVAL SYSTEM, WITHOUT THE WRITTEN CONSENT OF SAMTEC INC.

EXISPROD/ASSEMBLY.050  
SMS-DASM

**samtec**

520 PARK EAST BLVD. NEW ALBANY, INDIANA 47150  
PHONE (812) 944-6733 P.O. BOX 1147  
CODE 55322

MADE BY: BRYANT 4-9-91

SMS-1XX-XX-XX-D  
SHEET 1 OF 1