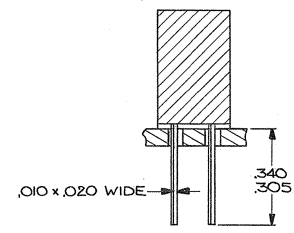
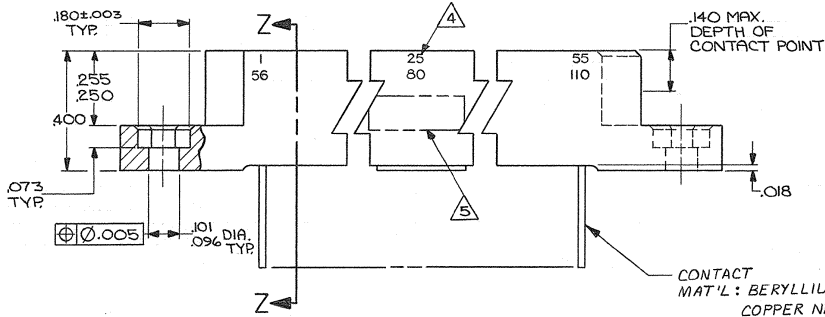
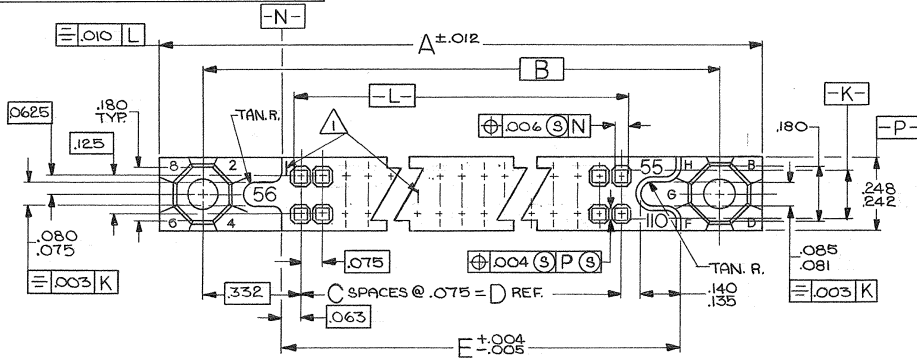


DRAWING MADE IN THIRD ANGLE PROJECTION

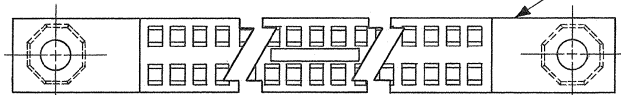
© COPYRIGHT 19 BY AMP INCORPORATED, HARRISBURG, PA.
ALL INTERNATIONAL RIGHTS RESERVED. AMP INCORPORATED PRODUCTS
COVERED BY U. S. AND FOREIGN PATENTS AND/OR PATENTS PENDING.

P F ZONE LTR		REVISIONS	DATE	APPROVED
E		ECO-08-020831	PY 10-08	BW



CONTACT
MAT'L: BERYLLIUM COPPER (BeCu) OR
COPPER NICKEL SILICONE (CuNiSi)

HOUSING
MAT'L: DIALLYL PHTHALATE,
COLOR, BLUE



- 1 NUMBERS (SEE TABLE) AND LINES INDICATING EVERY FIVE (5) CAVITIES MARKED ON MATING FACE
- 2 MUST MEET ALL APPLICABLE REQUIREMENTS OF MIL-C-55302.
- 3 NUMBERS INDICATING EVERY FIVE (5) CAVITIES MARKED ON SIDE. (EXCEPT 10 POS.)
- 4 IDENTIFICATION MARKINGS PER MIL-C-55302 (SEE TABLE), IN ADDITION TO AMP'S PART NUMBER, AND DATE CODE.

UNLESS OTHERWISE SPECIFIED DIMENSIONS ARE IN INCHES. TOLERANCES ON: DECIMALS ±.005 ANGLES		CONTRACT NO 10-23-79	AMP INCORPORATED Harrisburg, Pa.	
MATERIAL SEE CALLOUTS		DR A.M. SHARPE	NAME ASSEMBLY, RECEPTACLE, 750 SER. BOX, WITH .010 x .020 POST CONTACTS, AND EXTERNAL KEYING	
FINISH CONTACTS: .000050 GOLD IN CONTACT AREA; TIN-LEAD ON TAILS; ALL OVER NICKEL		CHK BY W. D. DUNN 11/1/77	APPD BY W. D. DUNN 11/1/77	APPD BY W. D. DUNN 11/1/77
		DSGN APPD	SIZE CODE IDENT NO DRAWING NO	REV
		OTHER APPD	C 00779 531143	E
			SCALE 4:1	SHEET 1 OF 2

CUSTOMER DRAWING

AMP 1471-B REV 12-78

531143

DRAWING MADE IN THIRD ANGLE PROJECTION

3

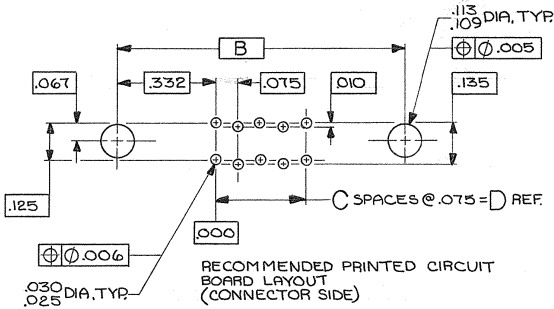
2

1

LOC DIST
DF FD

© COPYRIGHT 19 BY AMP INCORPORATED, HARRISBURG, PA.
ALL INTERNATIONAL RIGHTS RESERVED, AMP INCORPORATED PRODUCTS
COVERED BY U. S. AND FOREIGN PATENTS AND/OR PATENTS PENDING.

REVISIONS						
P	F	ZONE	LTR	DESCRIPTION	DATE	APPROVED
[SEE SHEET 1 OF 2]						



M55302/24-87	1	55	4.315	4.050	54	4.715	5.005	110	1-531143-1
	56	110							
M55302/24-83	1	50	3.940	3.675	49	4.340	4.630	100	1- -0
	51	100							
M55302/24-79	1	45	3.565	3.300	44	3.965	4.255	90	-9
	46	90							
M55302/24-75	1	40	3.190	2.925	39	3.590	3.880	80	-8
	41	80							
M55302/24-71	1	35	2.815	2.550	34	3.215	3.505	70	-7
	36	70							
M55302/24-67	1	30	2.440	2.175	29	2.840	3.130	60	-6
	31	60							
M55302/24-63	1	25	2.065	1.800	24	2.465	2.755	50	-5
	26	50							
M55302/24-59	1	20	1.690	1.425	19	2.090	2.380	40	-4
	21	40							
M55302/24-55	1	15	1.315	1.050	14	1.715	2.005	30	-3
	16	30							
M55302/24-51	1	10	.940	.675	9	1.340	1.630	20	-2
	11	20							
M55302/24-47	1	5	.565	.300	4	.965	1.255	10	531143-1
	6	10							
IDENT. MARKING M55302	CONTACT IDENT. NO.		E	D	C	B	A	NO. OF CONTACTS	PART NO

UNLESS OTHERWISE SPECIFIED DIMENSIONS ARE IN INCHES. TOLERANCES ON: DECIMALS ± .005 ANGLES	CONTRACT NO	AMP AMP INCORPORATED Harrisburg, Pa.	
	DR <i>A.M. SHAPE</i>	NAME ASSEMBLY, RECEPTACLE, 750 SER. BOX, WITH .010 x .020 POST CONTACTS AND EXTERNAL KEYING	
	CHK <i>Ray W. Durb...</i>	APPROV <i>Ray W. Durb...</i>	
	MATERIAL	APPROV <i>Ray W. Durb...</i>	
FINISH	DSGN APPD	SIZE CODE IDENT NO DRAWING NO	REV
[SEE SHEET 1 J]	OTHER APPD	C 00779 531143	E
		SCALE 4:1	SHEET 2 OF 2

CUSTOMER DRAWING

AMP 1471-6 REV 12-78