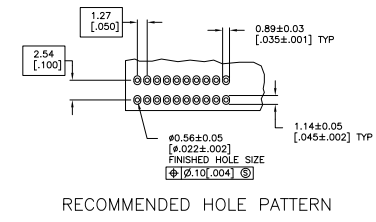
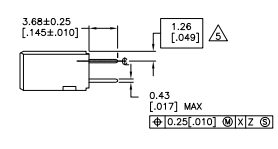
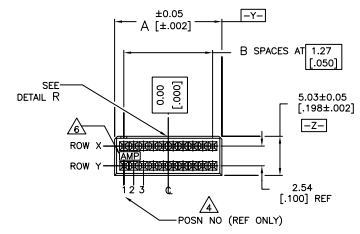
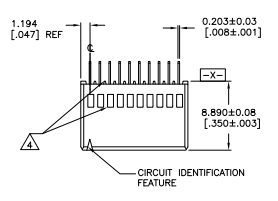
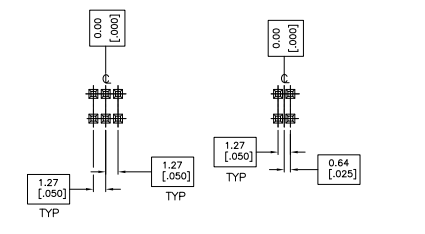


REV	DATE	DESCRIPTION	BY	CHK	APP
AD	00				
M1		REVISED ECO-09-024717			



RECOMMENDED HOLE PATTERN



BASIC DIMENSIONS FOR EVEN NO OF SPACES (SEE TABLE)

BASIC DIMENSIONS FOR ODD NO OF SPACES (SEE TABLE)

DETAIL R
SCALE 5:1

- △ CONTACT AREA PLATED WITH .00076 [.000030] GOLD, SOLDER TAILS PLATED WITH .00381 [.000150] TIN-LEAD, ALL OVER .00127 [.000050] NICKEL.
- △ POINT OF MEASUREMENT FOR GOLD PLATING THICKNESS IS 0.76 [.030] FROM MATING END OF CONTACT.
- △ HOUSING MATERIAL: THERMOPLASTIC, COLOR-BLACK.
- △ CONTACT MATERIAL: COPPER ALLOY.
- △ WINDOWS ON SIDE OF HOUSING AND RIBS ON BOTTOM OF HOUSING ARE MOLDERS OPTIONAL.
- △ THE NOTED DIMENSIONS APPLY AT THE INTERSECTION OF THE POST AND HOUSING.
- △ AMP LOGO PRESENCE AND LOCATION OPTIONAL.
- △ CONTACT AREA PLATED WITH .00076 [.000030] GOLD, SOLDER TAILS PLATED WITH .00381 [.000150] TIN, ALL OVER .00127 [.000050] NICKEL.
- △ OBSOLETE PARTS: OBSOLETE CIS STREAMLINING PER D.RENAUD/O.SIMIS

REV	DATE	DESCRIPTION	BY	CHK	APP
B	24	32.87 [1.294]			
	19	26.52 [1.044]			
	49	64.62 [2.544]			
B	39	51.92 [2.044]			
	4	7.47 [.294]			
	14	20.17 [.794]			
	9	13.52 [.544]			
B	24	32.87 [1.294]			
	19	26.52 [1.044]			
	49	64.62 [2.544]			
B	39	51.92 [2.044]			
B	4	7.47 [.294]			
	14	20.17 [.794]			
	9	13.52 [.544]			

THIS DRAWING IS A CONTROLLED DOCUMENT.

THE SHILEY GROUP
 THE ELECTRONICS CORPORATION
 HARRISBURG, PA 17106-3608

RCPT ASSY, VERT.
 DEL ROW, AMP/DOU
 SYSTEM 50

SIZE: A1
 DATE: 00779
 DRAWING NO: 104744

CUSTOMER DRAWING

SCALE: 4:1

