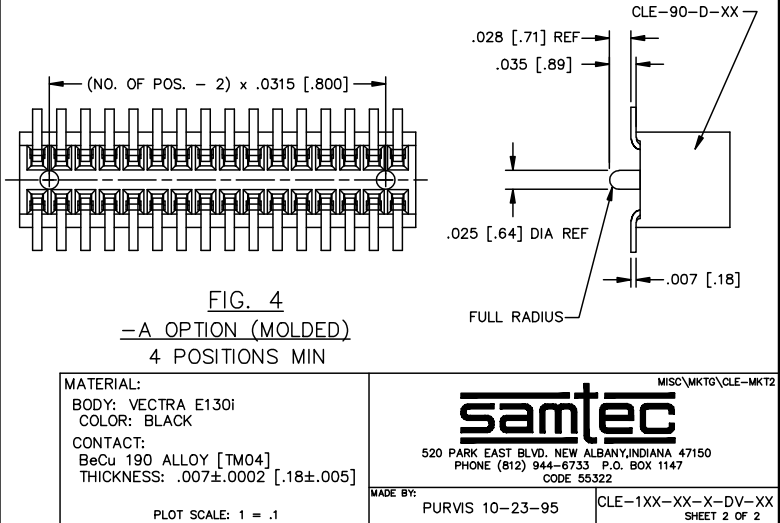
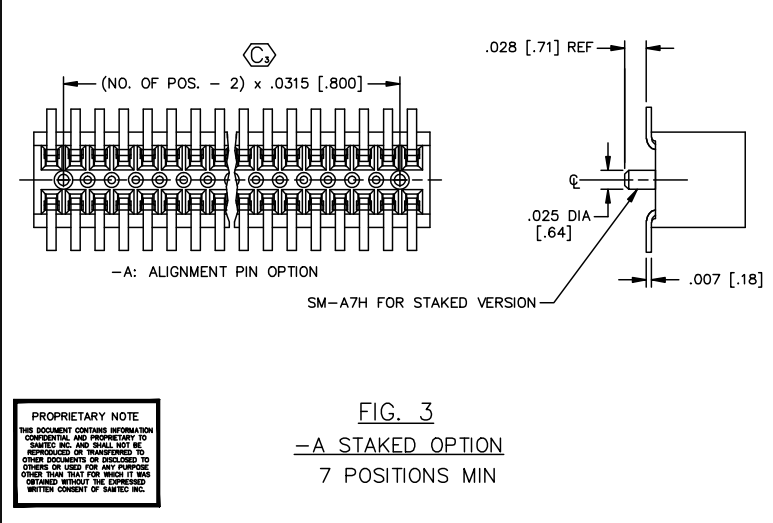
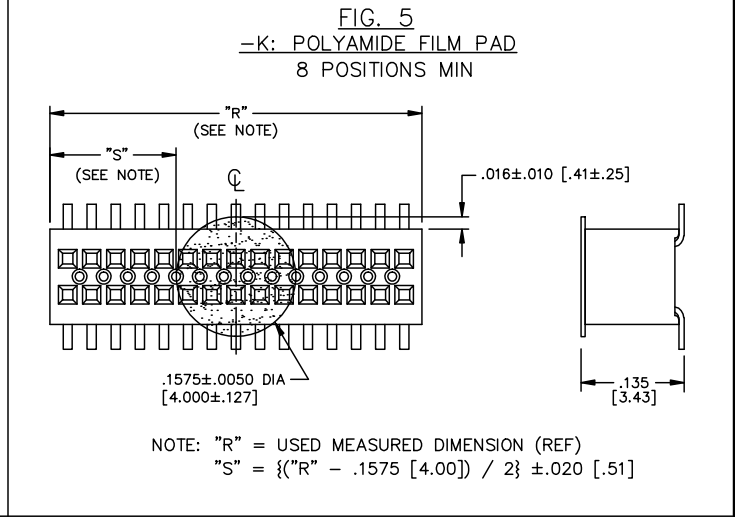
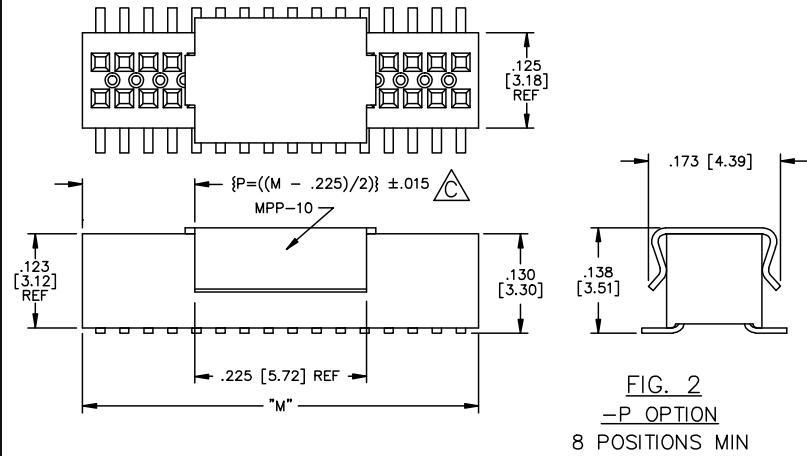


REV. AR

DIMENSIONS ARE IN INCHES		UNLESS OTHERWISE NOTED		TOLERANCES ARE:		TITLE:	DWG NO:
ONE PLACE DECIMALS ±.1 [2.54]	THREE PLACE DECIMALS ±.005 [.13]	ANGLES	± 2°			.8MM x 1.2MM C.L. SOCKET STRIP ASSEMBLY	CLE-1XX-XX-X-DV-XX
TWO PLACE DECIMALS ±.01 [.25]	FOUR PLACE DECIMALS ±.0020 [.05]						SHEET 2 OF 2



PROPRIETARY NOTE
THIS DOCUMENT CONTAINS INFORMATION CONFIDENTIAL AND PROPRIETARY TO SAMTEC INC. AND SHALL NOT BE REPRODUCED OR TRANSMITTED IN ANY FORM OR BY ANY MEANS, ELECTRONIC OR MECHANICAL, INCLUDING PHOTOCOPYING, RECORDING, OR BY ANY INFORMATION STORAGE AND RETRIEVAL SYSTEM, WITHOUT THE WRITTEN CONSENT OF SAMTEC INC.

MATERIAL:
BODY: VECTRA E130I
COLOR: BLACK
CONTACT:
BeCu 190 ALLOY [TM04]
THICKNESS: .007 ± .0002 [.18 ± .005]

PLOT SCALE: 1 = .1

MISC\MKTG\CLE-MKT2

samtec

520 PARK EAST BLVD. NEW ALBANY, INDIANA 47150
PHONE (812) 944-6733 P.O. BOX 1147
CODE 55322

MADE BY: PURVIS 10-23-95

CLE-1XX-XX-X-DV-XX
SHEET 2 OF 2