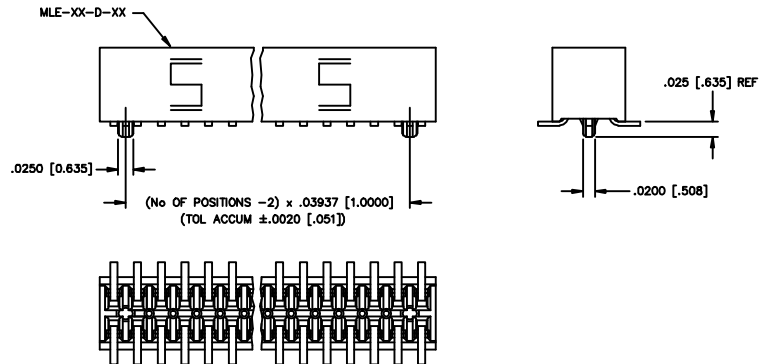


REV. L

FIG. 2
 -A: OPTION
 MOLDED ALIGNMENT PIN (3 POS. MIN.)
 (DIFFERENT AS SHOWN, OTHERWISE SAME AS FIG. 1)



DIMENSIONS ARE IN INCHES		UNLESS OTHERWISE NOTED		TOLERANCES ARE:		TITLE:	DWG NO:
ONE PLACE DECIMALS ± .1 [2.54]	THREE PLACE DECIMALS ± .005 [.127]	ANGLES	± 2°	1mm DUAL ROW STRIP ASSEMBLY		MLE-1XX-XX-X-DV-X	SHEET 2 OF 3
TWO PLACE DECIMALS ± .01 [.254]	FOUR PLACE DECIMALS ± .0020 [.051]						

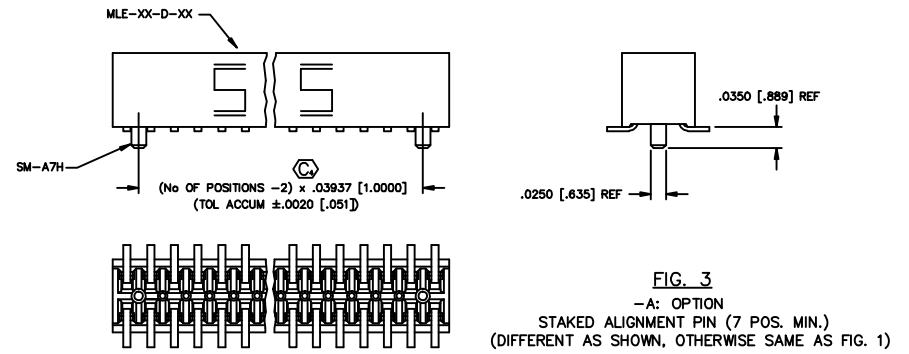
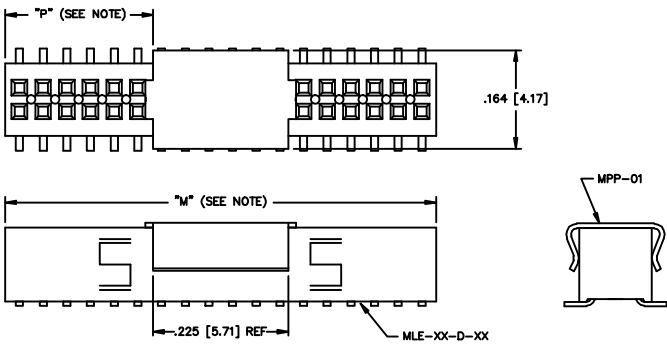


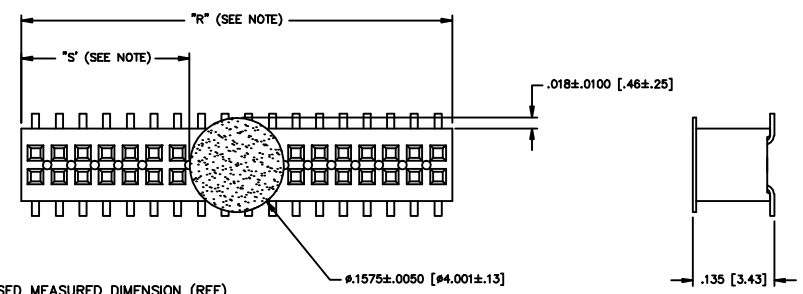
FIG. 3
 -A: OPTION
 STAKED ALIGNMENT PIN (7 POS. MIN.)
 (DIFFERENT AS SHOWN, OTHERWISE SAME AS FIG. 1)

FIG. 4
 -P: OPTION
 PICK & PLACE PAD
 (DIFFERENT AS SHOWN, OTHERWISE SAME AS FIG. 1)



NOTE: "M" = USED MEASURED DIMENSION (REF)
 "P" = (("M" - .225 [5.71]) / 2) ± .020 [.51]

PROPRIETARY NOTE
 THIS DOCUMENT CONTAINS INFORMATION CONFIDENTIAL AND PROPRIETARY TO SAMTEC INC. AND SHALL NOT BE REPRODUCED OR TRANSMITTED TO OTHER DOCUMENTS OR DISCLOSED TO OTHERS OR USED FOR ANY PURPOSE OTHER THAN THAT FOR WHICH IT WAS OBTAINED WITHOUT THE EXPRESSED WRITTEN CONSENT OF SAMTEC INC.

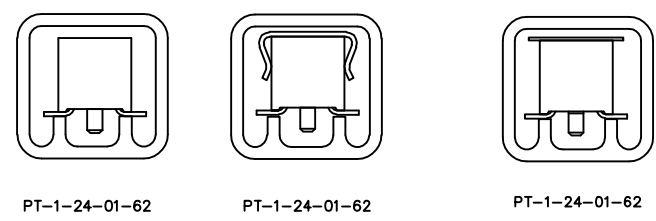


NOTE: "R" = USED MEASURED DIMENSION (REF)
 "S" = (("R" - .1575 [4.000]) / 2) ± .020 [.51]

FIG. 5
 -K: OPTION
 POLYAMIDE FILM PAD

PACKAGING VIEW

OPTION	TUBE	PLUG
NO OPTION, -A		
-K, -K-A	PT-1-24-01-62	TP-12
-P, -P-A		



samtec		EXISPROD\ASSEMBLY\1MM MLE-ASM2
520 PARK EAST BLVD. NEW ALBANY, INDIANA 47150 PHONE (812) 944-6733 P.O. BOX 1147 CODE 55322		
MADE BY:	D PURVIS 01-07-97	MLE-1XX-XX-X-DV-X SHEET 2 OF 3