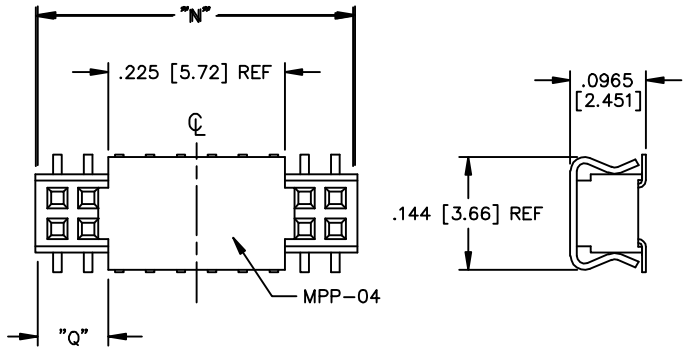


FIG. 3

-P: PICK & PLACE PAD
AVAILABLE ON POSITIONS 7 THRU 50 ONLY



NOTE: "N" = USED MEASURED DIMENSION (REF)
"Q" = {"N" - .225 [5.72]} / 2 ± .020 [.51]

UNLESS OTHERWISE NOTED
DIMENSIONS ARE IN INCHES (MILLIMETERS ARE IN BRACKETS) TOLERANCES ARE:

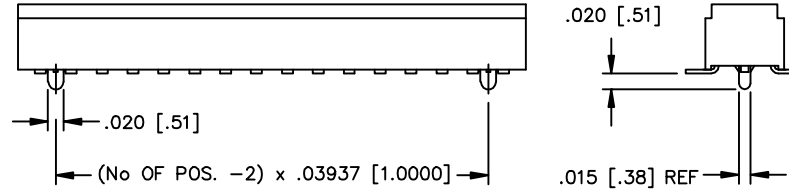
ONE PLACE DECIMALS ± .1[2.54]	THREE PLACE DECIMALS ± .005[.127]	ANGLES ± 2°
TWO PLACE DECIMALS ± .01[.25]	FOUR PLACE DECIMALS ± .0020[.051]	

TITLE: LOW PROFILE
1mm X 1mm
DOUBLE ROW BODY

DWG NO: CLM-1XX-XX-XX-D-XX
SHEET 2 OF 2

FIG. 5

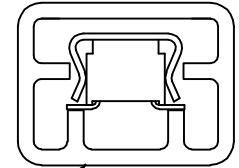
-A: MOLDED ALIGNMENT PIN



PACKAGING
SCALE: .75x
(SEE NOTE 3)

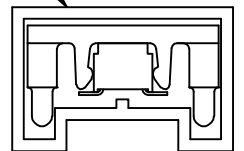
TABLE 2
(INCLUDES -D & -D-BE)

OPTION	TUBE	PLUG
-P, -A-P	PT-CLX001-D	TP-33
-PA	PT-CLP001-PA	TP-09
-NONE -A, -A-K, -K	PT-1-24-01-50	TP-33



PT-CLX001-D

PT-CLP001-PA



PT-1-24-01-50

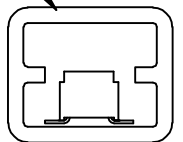


FIG. 4

-PA: PICK & PLACE PAD WITH ALIGNMENT PINS

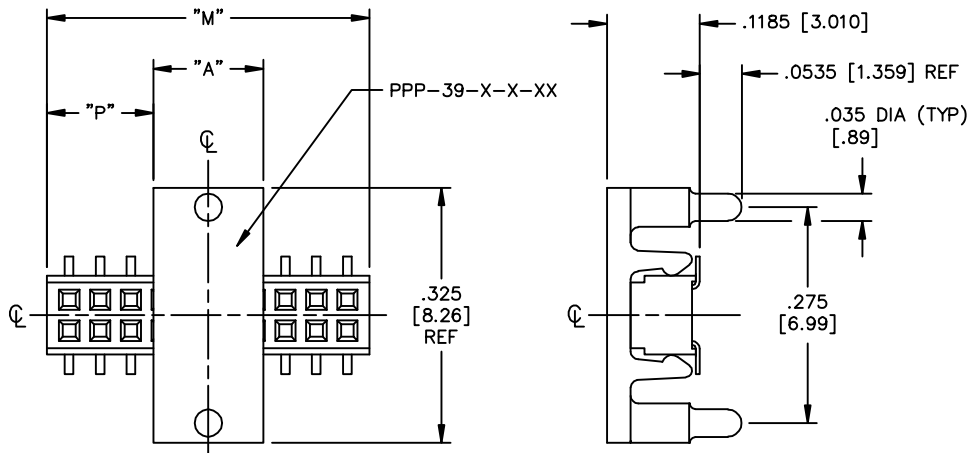


TABLE 1

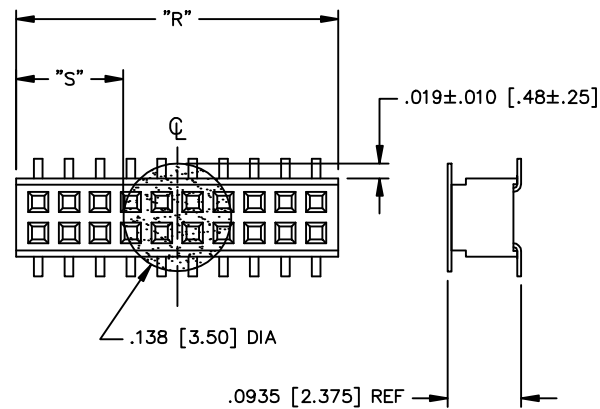
POS/ROW	"A"	"M"	"P"
4-15	.140 [3.56] REF	USED MEASURED DIMENSION (REF)	{"M" - "A"} / 2 ± .010 [.25]
16-50	.280 [7.11] REF		

TABLE 3

POSITIONS	PAD
EVEN	4 - 14 PPP-39-E-4-15
	16 - 50 PPP-39-E-16-50
ODD	5 - 15 PPP-39-O-4-15
	17 - 49 PPP-39-O-16-50

FIG. 6

-K: POLYAMIDE FILM PAD
AVAILABLE ON POSITIONS 7 THRU 50 ONLY



NOTE: "R" = USED MEASURED DIMENSION (REF)
"S" = {"R" - .138 [3.50]} / 2 ± .020 [.51]

PROPRIETARY NOTE
THIS DOCUMENT CONTAINS INFORMATION CONFIDENTIAL AND PROPRIETARY TO SAMTEC INC. AND SHALL NOT BE REPRODUCED OR TRANSMITTED TO OTHER DOCUMENTS OR DISCLOSED TO OTHERS OR USED FOR ANY PURPOSE OTHER THAN THAT FOR WHICH IT WAS OBTAINED WITHOUT THE EXPRESSED WRITTEN CONSENT OF SAMTEC INC.

samtec

520 PARK EAST BLVD. NEW ALBANY, INDIANA 47150
PHONE (812) 944-6733 P.O. BOX 1147
CODE 55322

PLOT SCALE: 1=.125

MADE BY:
BRATCHER 6-2-97

CLM-1XX-XX-XX-D-XX
SHEET 2 OF 2