

REVISIONS AR

DO NOT SCALE FROM THIS PRINT

FIG. 1
-01: THROUGH HOLE

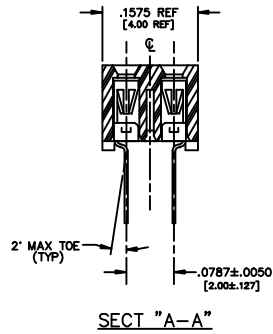
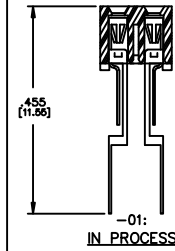
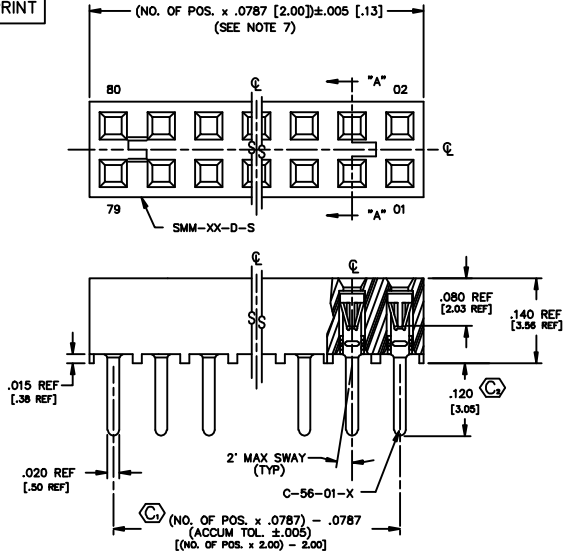
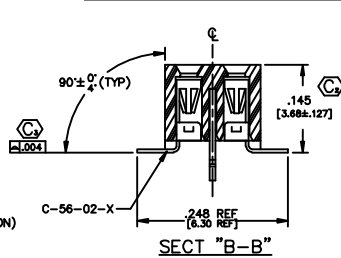
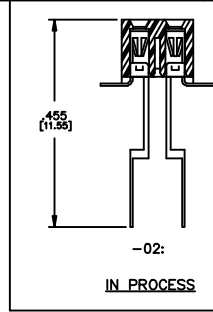
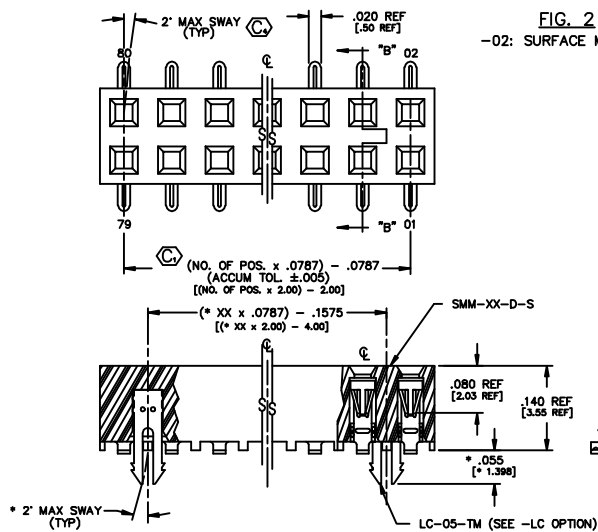


FIG. 2
-02: SURFACE MOUNT



DIMENSIONS ARE IN INCHES UNLESS OTHERWISE NOTED		TOLERANCES ARE	ANGLES	TITLE:	DWG NO:
ONE PLACE DECIMALS: ± .1	THREE PLACE DECIMALS: ± .005	± .005	± 1°	2 mm SOCKET STRIP	SMM-1XX-XX-XX-D-XX-XX-X-XX
TWO PLACE DECIMALS: ± .01	FOUR PLACE DECIMALS: ± .0020	± .0020			SHEET 1 OF 2

NOTES:

- RETENTION FORCE IN BODY TO BE: 1 lbs. MIN
- INSERTION FORCE TO BE: 3.0 oz. MAX.
- WITHDRAWAL FORCE TO BE: 0.5 oz. MIN.
- ⊙ REPRESENTS CRITICAL DIMS. FOR STATISTICAL PROCESS CONTROL.
- [] DIMS ARE IN METRIC AND ARE NOT CONTROLLING DIMS.
- "-LC" OPTION FOR A 02 POSITION WILL HAVE ONLY ONE LOCKING CLIP (LC-05-T).
- "END WALLS" AFTER CUTTING SHOULD BE .017 ± .005.
- FOR -01 LEAD STYLE, LAYER PACKAGE POSITIONS -01 THRU -04.
- FOR -02 LEAD STYLE WITHOUT PICK & PLACE PAD, LAYER PACKAGE POSITION -02 ONLY.
- 02 THRU -05 POSITION WITH -K OR -P TO BE PACKAGED IN -TR ONLY. -06 THRU -40 POSITION AVAILABLE IN TUBE OR -TR PACKAGING.
- .010" MAX CUT FLASH.
- NO FLASH ALLOWED IN SOCKET OR EXTENDING BELOW LEADS.
- DUE TO THE HIGH AMOUNT OF INSERTION FORCE NEEDED, THE -LC OPTION IS NOT COMPATIBLE WITH AUTO PLACEMENT. SAMTEC RECOMMENDS MANUAL PLACEMENT FOR ALL ASSEMBLIES WITH THE -LC OPTION.
- INSULATOR MATERIAL: BLACK, LCP, UL 94 V0

[AR]

SMM-1XX-XX-XX-D-XX-XX-X-XX

- NO. OF POS. PER ROW THROUGH HOLE: -01 THRU -40
SURFACE MOUNT: -02 THRU -40
- LEAD STYLE
-01: THROUGH HOLE (C-56-01-X)
-02: SURFACE MOUNT (C-56-02-X)
- [AR] PLATING OPTION
-S: SELECTIVE, 30 Au / 50 NI NICKEL ON CONTACT, MATTE TIN TAIL
-F: FLASH SELECTIVE, 3 Au / 50 NI MIN ON CONTACT, MATTE TIN TAIL
-H: HEAVY GOLD, 50 Au / 50 NI MIN ON CONTACT, 3 Au / 50 NI MIN ON TAIL
-SM: SELECTIVE, 30 Au / 50 NI MIN ON CONTACT, MATTE TIN TAIL
-FM: FLASH SELECTIVE, 3 Au / 50 NI MIN ON CONTACT, MATTE TIN TAIL
-L: LIGHT SELECTIVE, 10 Au / 50 NI MIN ON CONTACT, MATTE TIN TAIL

- SECTION TAPE & REEL MAX. POSITIONS AVAILABLE: 27 VERTICAL / 28 HORIZONTAL (SEE SHEET 2)
- OPTION 2
-P: PICK AND PLACE PAD (USE PPP-03) (SEE FIG 3)
-K: POLYAMIDE FILM PAD (USE K-900-300) (.006 [0.13] THICKNESS WITH SILICONE ADHESIVE, SEE FIG 4) (2 POS MIN, SEE NOTE 10) (AVAILABLE ON LEAD STYLE -02 ONLY)
- OPTION 3
-LC: LOCKING CLIP (USE 2 LC-05-TM) (AVAILABLE ONLY WITH LEAD STYLE -02, SEE * DIMS, SEE NOTE 6 & 13, SEE FIG 2)
- POLARIZING OPTION INDICATE POSITION (USE PK-07-H)

ROW OPTION
-D: DOUBLE ROW (USE SMM-XX-D-S)

"R" = NO OF POS x .0787 [2.00]
"S" = {("R" - .394) / 2} ± .020

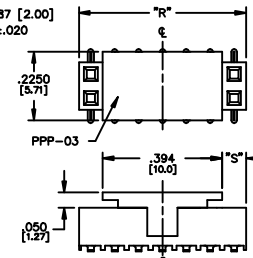
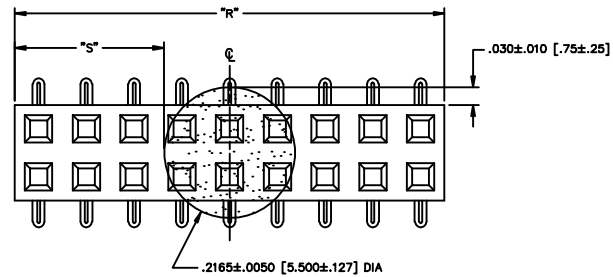


FIG. 3
-P: PICK AND PLACE PAD (PLACE PPP-03 ABOUT C.L. AS SHOWN) (SEE NOTE 10)



NOTE: "R" = USED MEASURED DIMENSION (REF)
"S" = {("R" - .2165 [5.50]) / 2} ± .020 [.51]

FIG. 4
-K: POLYAMIDE FILM PAD [2 POSITION MINIMUM, SEE NOTE 10]

PROPRIETARY NOTE
THIS DOCUMENT CONTAINS SAMTEC PROPRIETARY INFORMATION. IT IS THE PROPERTY OF SAMTEC AND IS NOT TO BE REPRODUCED, COPIED, OR TRANSMITTED IN ANY FORM OR BY ANY MEANS, ELECTRONIC OR MECHANICAL, INCLUDING PHOTOCOPYING, RECORDING, OR BY ANY INFORMATION STORAGE AND RETRIEVAL SYSTEM, WITHOUT THE WRITTEN PERMISSION OF SAMTEC.

MFG PARTS
SMM-1XX-XX-XX-D-XX-XX-X-XX

samtec

520 PARK EAST BLVD. NEW ALBANY, INDIANA 47150
PHONE (812) 944-8733 P.O. BOX 1147
CODE 85322

MADE BY: KOLB 5-21-91
DEM

SMM-1XX-XX-XX-D-XX-XX-X-XX
SHEET 1 OF 2