

UNLESS OTHERWISE NOTED
 DIMENSIONS ARE IN INCHES TOLERANCES ARE:
 ONE PLC DECIMALS ± .1 [2.54] THREE PLC DECIMALS ± .005 [0.127] ANGLES ± 2°
 TWO PLC DECIMALS ± .01 [0.254] FOUR PLC DECIMALS ± .0020 [0.0508]

TITLE: 2mm SURFACE MOUNT BOX CONNECTOR STRIP ASSEMBLY
 DWG NO: MMS-1XX-02-XXX-XX-XX-XXX
 SHEET 2 OF 4

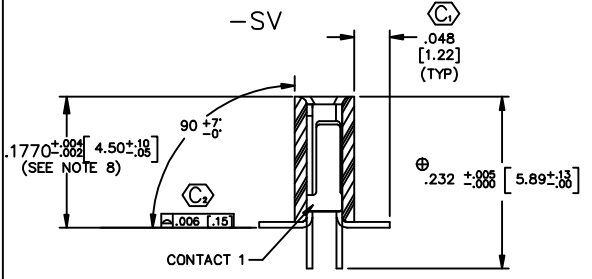
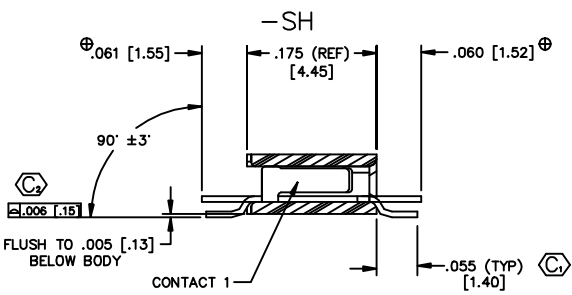
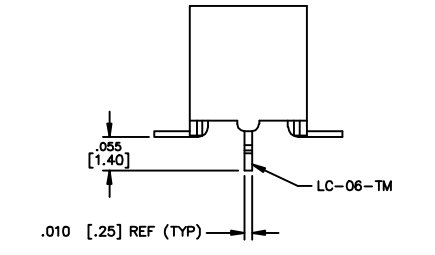
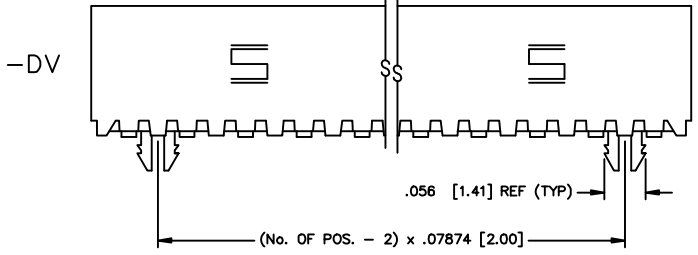
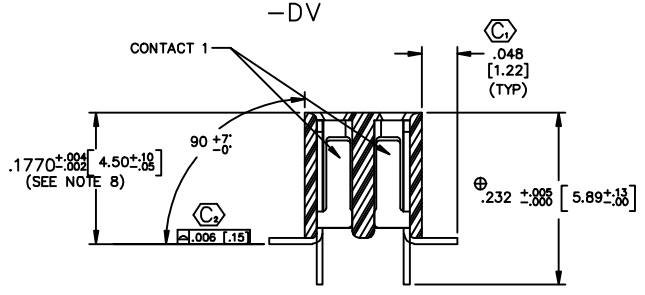
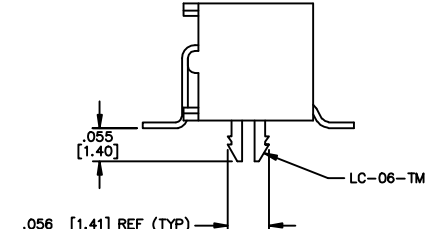
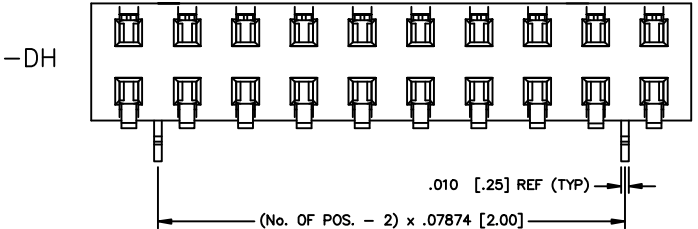
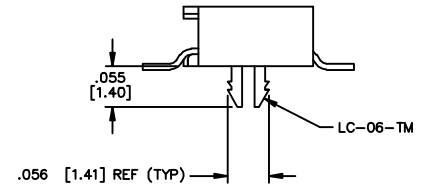
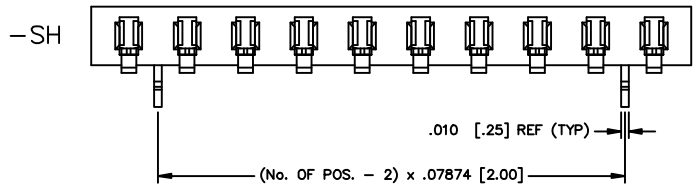
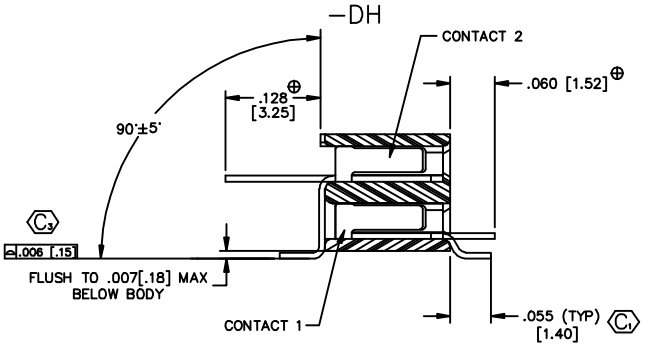


TABLE 1

| LEAD STYLE | CONTACT 1 | CONTACT 2 |
|--------------|------------|------------|
| 02-SH | C-63-06-XX | |
| 02-DH | C-63-07-XX | C-63-08-XX |
| 02-SV, 02-DV | C-63-22-XX | |

⊕ = IN-PROCESS DIMENSIONS



| OPTION | BODY | LOCKING CLIP |
|--------|-------------|--------------|
| -DV | MMS-XX-D | LC-06-TM |
| -DH | MMS-XX-D-LC | LC-06-TM |
| -SH | MMS-XX-S-LC | LC-06-TM |

FIG. 2
 -LC: LOCKING CLIP (-DV, -DH, & -SH ONLY)

PROPRIETARY NOTE
 THIS DOCUMENT CONTAINS INFORMATION CONFIDENTIAL AND PROPRIETARY TO SAMTEC INC. AND SHALL NOT BE REPRODUCED OR TRANSFERRED TO OTHER DOCUMENTS OR DISCLOSED TO OTHERS OR USED FOR ANY PURPOSE OTHER THAN THAT FOR WHICH IT WAS OBTAINED WITHOUT THE EXPRESSED WRITTEN CONSENT OF SAMTEC INC.

MSC/MKTG
 MMSZASM2

samtec

520 PARK EAST BLVD. NEW ALBANY, INDIANA 47150
 PHONE (812) 944-6733 FAX (812) 944-1147
 CODE 55322

MADE BY: BRATCHER 4-1-94

MMS-1XX-02-XXX-XX-XX-XXX
 SHEET 2 OF 4