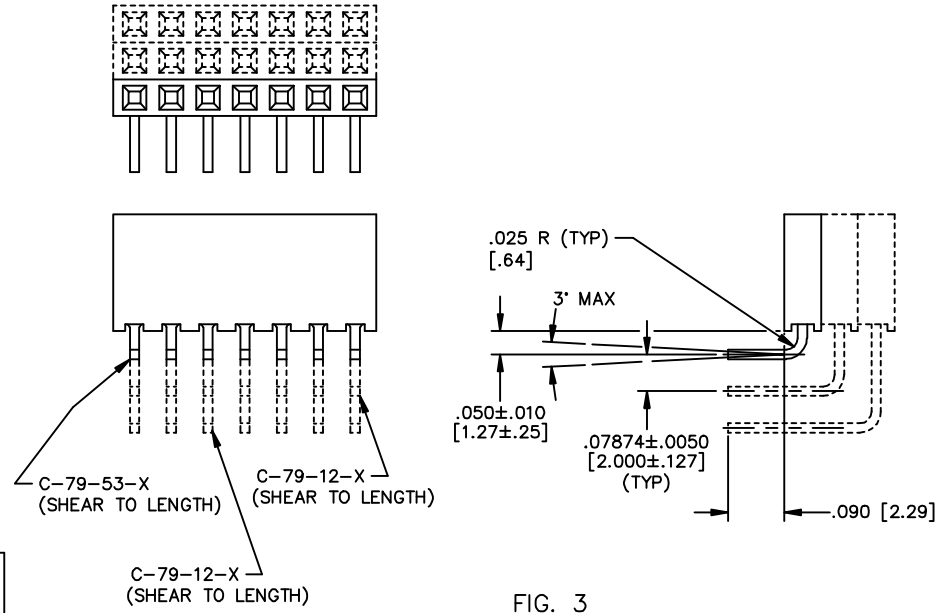
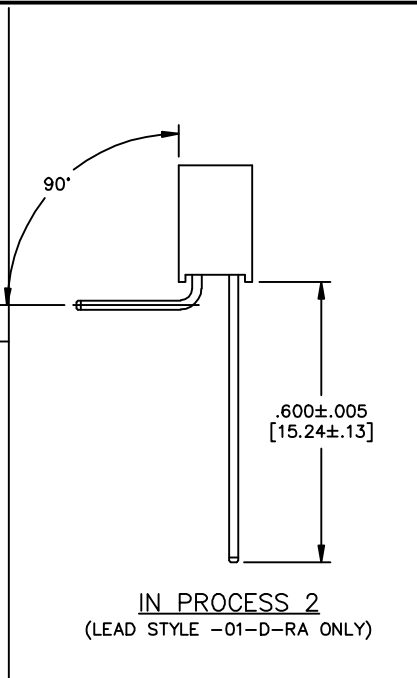
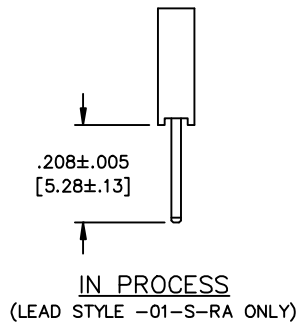
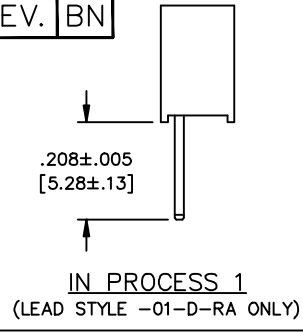


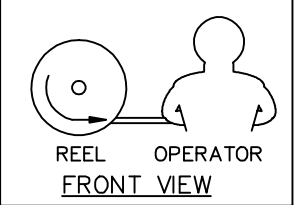
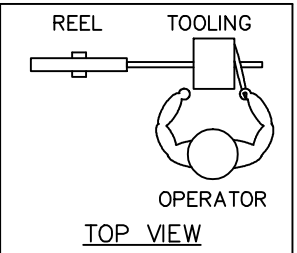
REV. BN

DIMENSIONS ARE IN INCHES		TOLERANCES ARE:		TITLE: 2MM SOCKET STRIP ASSEMBLY	DWG NO: SQT-1XX-XX-XXX-X-XXX-XXX
ONE PLACE DECIMALS ± .1[2.5]	THREE PLACE DECIMALS ± .005[.127]	ANGLES ± 2°	TWO PLACE DECIMALS ± .01[.25]		

SHEET 2 OF 3



-RA: RIGHT ANGLE
(-01 STYLE SINGLE, DOUBLE, AND TRIPLE ROW)



WASHER REEL ASSEMBLY ORIENTATION VIEW

NOT ENGINEERING APPROVED

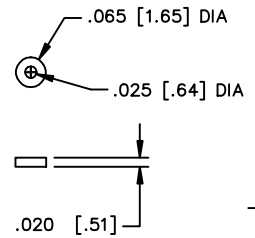
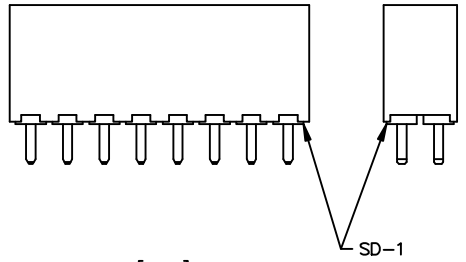


FIG. 4
-SD1: SOLDER DONUT (ONE PER POSITION)

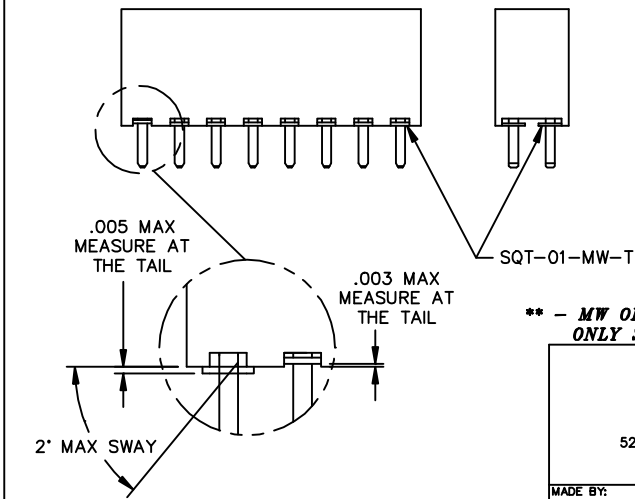


FIG. 5
** -MW: METAL WASHER (ONE PER POSITION) (AVAILABLE ON LEAD STYLES -01 & -03 ONLY) (5 POS MIN) (30 POS MAX)

** - MW OPTION, DO NOT DESIGN IN. SAMTEC WILL ONLY SUPPORT EXISTING BUSINESS 2/06/02.

PROPRIETARY NOTE
THIS DOCUMENT CONTAINS INFORMATION CONFIDENTIAL AND PROPRIETARY TO SAMTEC INC. AND SHALL NOT BE REPRODUCED OR TRANSMITTED TO OTHER DOCUMENTS OR DISCLOSED TO OTHERS OR USED FOR ANY PURPOSE OTHER THAN THAT FOR WHICH IT WAS OBTAINED WITHOUT THE EXPRESSED WRITTEN CONSENT OF SAMTEC INC.

samtec

520 PARK EAST BLVD. NEW ALBANY, INDIANA 47150
PHONE (812) 944-6733 P.O. BOX 1147
CODE 55322

MISC\MKTG SQT-MKT2

MADE BY: BRATCHER 7-24-95

SQT-1XX-XX-XXX-X-XXX-XXX
SHEET 2 OF 3