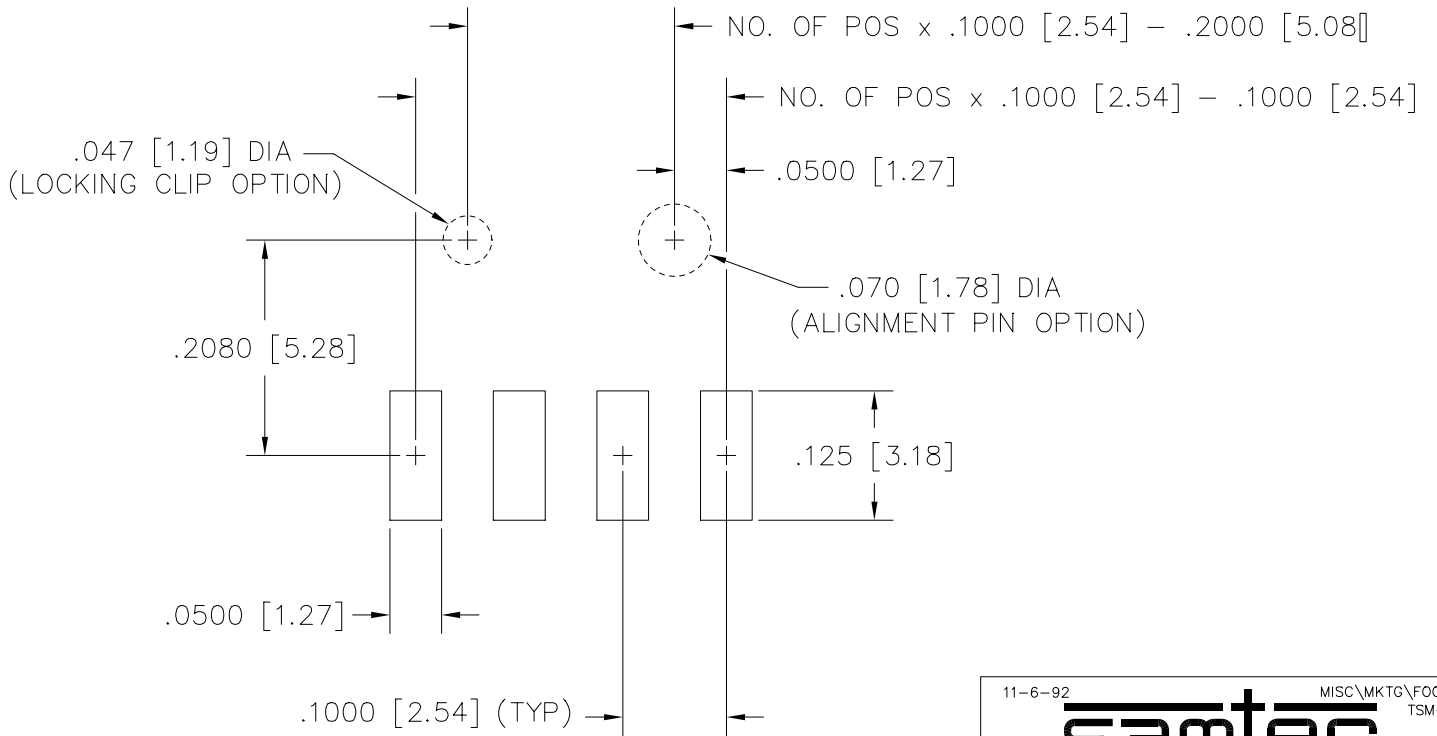


RECOMMENDED P.C. BOARD LAYOUT FOR TSM (SINGLE-HORIZONTAL)



11-6-92

MISC\MKTG\FOOTPRNT
TSM-SH

samtec

810 PROGRESS BLVD. NEW ALBANY, INDIANA 47150
PHONE (812) 944-6733 P.O. BOX 1147

PLOT SCALE: 1 = .1