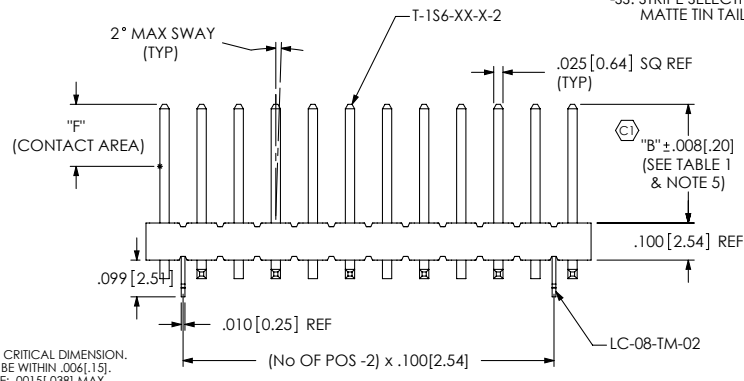
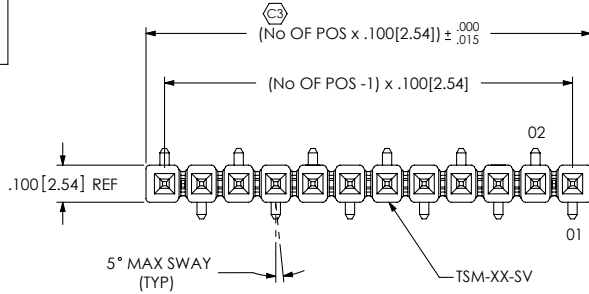


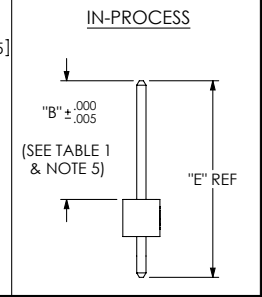
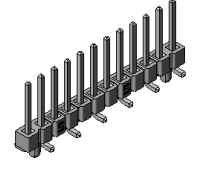
REVISION BJ

DO NOT SCALE FROM THIS PRINT



TSM-1XX-XX-XXX-SV-XX-XXX-XX

- No OF POSITIONS: -02 THRU -50
- LEAD STYLE: SEE TABLE 1
- PLATING SPECIFICATION:
 - T: MATT TIN CONTACT AND TAIL
 - S: SELECTIVE, 30 Au / 50 Ni MIN ON CONTACT, MATTE TIN TAIL
 - G: GOLD, 10 Au / 50 Ni MIN ON CONTACT, 3 Au / 50 Ni MIN ON TAIL
 - L: LIGHT SELECTIVE, 10 Au / 50 Ni MIN ON CONTACT, MATTE TIN ON TAIL
 - F: FLASH SELECTIVE, 3 Au / 50 Ni MIN ON CONTACT, MATTE TIN TAIL
 - H: HEAVY GOLD, 30 Au / 50 Ni MIN ON CONTACT, 3 Au / 50 Ni MIN ON TAIL
 - TL: TIN / LEAD (90/10+/-5%) CONTACT AND TAIL (LEAD STYLE -01 & -02 ONLY)
 - STL: SELECTIVE, 30 Au / 50 Ni MIN ON CONTACT, TIN/LEAD (90/10+/-5%) TAIL (LEAD STYLE -01 & -02 ONLY)
 - TM: MATTE TIN CONTACT AND TAIL
 - SM: SELECTIVE, 30 Au / 50 Ni MIN ON CONTACT, MATTE TIN TAIL
 - LM: LIGHT SELECTIVE, 10 Au / 50 Ni MIN ON CONTACT, MATTE TIN TAIL
 - FM: FLASH SELECTIVE, 3 Au / 50 Ni MIN ON CONTACT, MATTE TIN TAIL
 - SS: STRIPE SELECTIVE, 30 Au / 50 Ni MIN ON CONTACT, MATTE TIN TAIL (SEE NOTE 9)
- OPTION #1:
 - LC: LOCKING CLIP (SEE FIG. 1) [SEE NOTE 8] [USE LC-08-TM-02] [-02 THRU -36 POS: 2 PER STRIP, -02 POS: 1 PER STRIP]
 - A: ALIGNMENT PIN (SEE FIG. 2)
- OPTION #2: POLARIZED POSITION: SPECIFY PIN OMITTED
- OPTION #3:
 - P: PICK & PLACE PAD (SEE FIG. 3) [USE PPP-07] [4 POS MINIMUM OR -02 & -03 POS WITH -TR] (SEE NOTE 7)
 - TR: TAPE & REEL (SEE NOTE 7) (-02 THRU -22 POS)
- ROW SPECIFICATION:
 - SV: SINGLE VERTICAL (USE TSM-XX-SV-XX)



- NOTES:
- ⊕ REPRESENTS A CRITICAL DIMENSION.
 - COPLANARITY TO BE WITHIN .006 [1.5].
 - BURR ALLOWANCE: .0015 [0.38] MAX.
 - MAXIMUM CUT FLASH: .015 [1.38] MAXIMUM ON TOP & SIDES OF BODY AND .030 [1.27] MAXIMUM ON SURFACE MOUNT SIDE OF BODY.
 - POST HEIGHT VARIATION BETWEEN ANY TWO PINS: .005 [1.3] MAXIMUM.
 - MAXIMUM ALLOWABLE BOW: .002 [0.05] INCH/INCH AFTER ASSEMBLY.
 - LEADS MAY NOT BE VISIBLE FOR CUSTOMER VISUAL INSPECTION WITH -P OPTION ON SMALLER POSITIONS PARTS.
 - DUE TO THE HIGH AMOUNT OF INSERTION FORCE NEEDED, THE -LC OPTION IS NOT COMPATIBLE WITH AUTO PLACEMENT. SAMTEC RECOMMENDS MANUAL PLACEMENT FOR ALL ASSEMBLIES WITH THE -LC OPTION.
 - 01 LEAD STYLE ONLY, MATES WITH SSW, SSG, BCS, SSM, ESW, ESQ.

FIG. 1 TSM-112-02-XXX-SV-LC SHOWN

UNLESS OTHERWISE SPECIFIED, DIMENSIONS ARE IN INCHES. TOLERANCES ARE:

DECIMALS ANGLES
 .XX: ± .01 [3] 2°
 .XXX: ± .005 [1.3]
 .XXXX: ± .0020 [0.51]

PROPRIETARY NOTE
 THIS DOCUMENT CONTAINS INFORMATION CONFIDENTIAL AND PROPRIETARY TO SAMTEC, INC. AND SHALL NOT BE REPRODUCED OR TRANSFERRED TO OTHER DOCUMENTS OR DISCLOSED TO OTHERS OR USED FOR ANY PURPOSE OTHER THAN THAT WHICH IT WAS OBTAINED WITHOUT THE EXPRESSED WRITTEN CONSENT OF SAMTEC, INC.

MATERIAL: DO NOT SCALE DRAWING SHEET SCALE: 2.5:1
 INSULATOR: LC/P, UL 94 V0
 COLOR: BLACK

TERMINAL: PHOS BRONZE

F:\DWG\MSC\MKTG\TSM-1XX-XX-XXX-SV-XX-XXX-XX\MKT.SLDDRW



STYLE	"B"	"C"	"D" MAX	"E"	"F"	TERMINAL
-01	.230 [5.84]	.280 [7.11]	.208 [5.28]	.445 [11.30]	.165 [4.19]	T-1S6-16-X-2
-02	.320 [8.13]	.370 [9.40]	.193 [4.90]	.530 [13.46]	.165 [4.19]	T-1S6-08-X-2
-03	.420 [10.67]	.470 [11.94]	.193 [4.90]	.630 [16.00]	.165 [4.19]	T-1S6-15-X-2
-04	.120 [3.05]	.270 [6.86]	.208 [5.28]	.335 [8.51]	.050 [1.27]	T-1S6-21-X-2
-05	.075 [1.91]	.270 [6.86]	.223 [5.66]	.300 [7.62]	.050 [1.27]	T-1S6-18-X-2

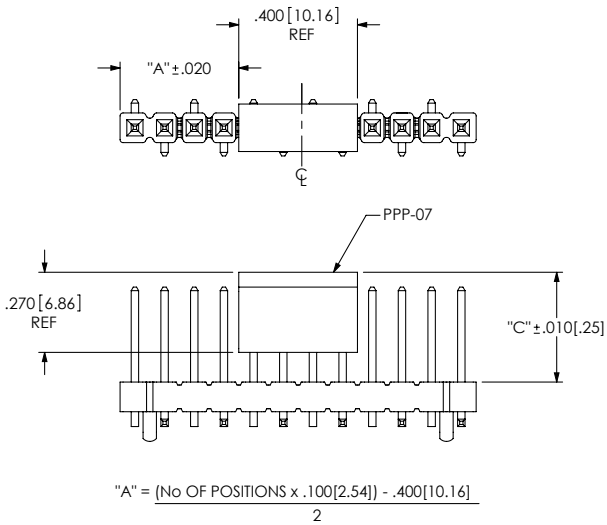
DESCRIPTION: SINGLE ROW .100 SMT ASSEMBLY

DWG. NO. TSM-1XX-XX-XXX-SV-XX-XXX-XX

BY: DEAN P 8/21/2002 SHEET 1 OF 2

REVISION BJ

FIG. 3
-P: PICK & PLACE PAD OPTION
4 POSITION MINIMUM
[PLACE PAD ON CENTERLINE AS SHOWN]



PACKAGING TABLE			
STYLE	OPTION	TUBE	PLUG
-01	----	PT-1-24-02-29 (SEE NOTE 3)	TP-24
-02, -04, -05	----	PT-1-24-02-29 (SEE NOTE 3)	TP-24
-01, -02, -04, -05	-LC, -A	PT-1-24-02-29 (SEE NOTE 3)	TP-24
-01, -04, -05	-P	PT-1-24-05-29	TP-03
-01, -04, -05	-LC-P, -A-P	PT-1-24-05-29	TP-03
-02	-P	PT-1-24-13-29	TP-03
-02	-LC-P, -A-P	PT-1-24-13-29	TP-03
-03	----	PT-1-24-10-29 (SEE NOTE 3)	TP-24
-03	-LC, -A	PT-1-24-10-29 (SEE NOTE 3)	TP-24
-03	-P	PT-1-24-14-29	TP-09
-03	-LC-P, -A-P	PT-1-24-14-29	TP-09

- NOTES:
 1. LOAD PARTS POSITION 1 FIRST IN SAME DIRECTION AS ARROW.
 2. NOTE DELETED
 3. PACKAGE POSITIONS -04 THRU -36.
 4. POLARIZED 4 POSITION PARTS WITHOUT PADS ARE TO BE LAYER PACKAGED OR PACKAGED IN TAPE AND REEL.

BJ

FIG. 4
TUBE PACKAGING

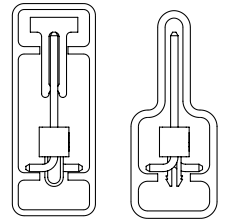
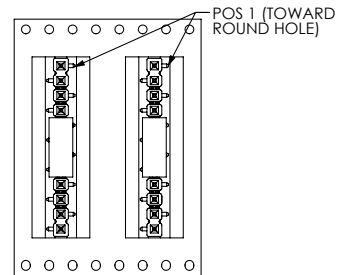


FIG. 5
-TR: TAPE & REEL PACKAGNG OPTION



POCKET NOT DETAILED

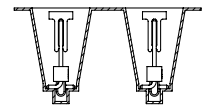


FIG. 2
-A: ALIGNMENT PIN OPTION
TSM-112-02-X-SV-A SHOWN
[DIFFERENT AS SHOWN, OTHERWISE SAME AS FIG. 1]

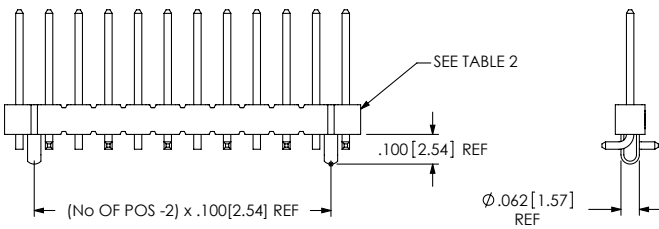


TABLE 2: ALIGNMENT PIN BODY	
POSITION	USE BODY
-3	TSM-03-SV-A
-02 & -04 THRU -50	TSM-XX-SV-X

F:\DWG\MSC\MKTG\TSM-1XX-XX-XXX-SV-XX-XXX-XX-MKT.SLDDRW

PROPRIETARY NOTE
 THIS DOCUMENT CONTAINS INFORMATION
 CONFIDENTIAL AND PROPRIETARY TO
 SAMTEC, INC. AND SHALL NOT BE REPRODUCED
 OR TRANSFERRED TO OTHER DOCUMENTS OR
 DISCLOSED TO OTHERS OR USED FOR ANY
 PURPOSE OTHER THAN THAT WHICH IT WAS
 OBTAINED WITHOUT THE EXPRESSED WRITTEN
 CONSENT OF SAMTEC, INC.

DO NOT SCALE DRAWING

SHEET SCALE: 2:1

samtec

520 PARK EAST BLVD, NEW ALBANY, IN 47150
 PHONE: 812-944-6733 FAX: 812-948-5047
 e-Mail info@SAMTEC.com code 55322

DESCRIPTION: SINGLE ROW .100 SMT ASSEMBLY

DWG. NO. TSM-1XX-XX-XXX-SV-XX-XXX-XX

BY: DEAN P 8/21/2002 SHEET 2 OF 2