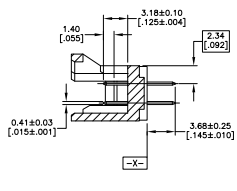
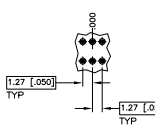
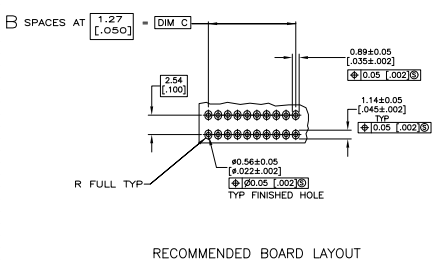


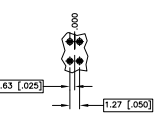
- 1 CONTACT AREA PLATED WITH .000762[.000030] MIN GOLD; SOLDER LEADS PLATED WITH .00381[.000150] MIN TIN-LEAD ALL OVER .00127[.000050] MIN NICKEL.
- 2 POINT OF MEASUREMENT FOR PLATING THICKNESS
- 3 DIMENSION APPLIES AT BASE OF SHROUD
- 4 THE NOTED DIMENSIONS APPLY AT THE INTERSECTION OF THE POST AND HOUSING
- 5 (Y1) (Y2) ARE LOCATED THE SAME AS (Z1) (Z2) OPPOSITE SIDE OF HOUSING AS SHOWN
- 6 HOUSING: THERMOPLASTIC, COLOR-BLACK. POSTS: COPPER ALLOY.
- 7 CONTACT AREA PLATED WITH 0.000762 [.000030] MIN GOLD, SOLDER LEADS PLATED WITH 0.00381 [.000150] MIN TIN, ALL OVER 0.00127 [.000050] MIN NICKEL.
- 8 PRELIMINARY PART - NOT RELEASED FOR PRODUCTION.
- 9 ROHS 2002/95/EC COMPLIANT.



REV	APP	REVISED FOR	REVISIONS
AD	00		DATE
AX3		REVISED PER ECO-11-004917	11MM111 RK HMR
9/10		OBsolete	27.79 20.32 15 24.89 34 6-104666-3
9/10		OBsolete	12.55 5.08 4 9.65 10 6-104666-2
9			22.71 15.24 12 19.81 26 6-104666-1
9			21.44 13.97 11 18.54 24 6-104666-0
9			16.36 8.89 7 13.46 16 5-104666-9
9/10		OBsolete	49.38 46.99 33 46.48 68 5-104666-8
9/10		OBsolete	44.30 36.83 29 41.40 60 5-104666-7
9/10		OBsolete	69.70 62.23 49 66.80 100 5-104666-6
9			57.00 49.53 39 54.10 80 5-104666-5
9			37.95 30.48 24 35.05 50 5-104666-4
9			31.60 24.13 19 28.70 40 5-104666-3
9			25.25 17.78 14 22.35 30 5-104666-2
9			18.90 11.43 9 16.00 20 5-104666-1
8			27.79 20.32 15 24.89 34 1-104666-3
8			12.55 5.08 4 9.65 10 1-104666-2
8			22.71 15.24 12 19.81 26 1-104666-1
8			21.44 13.97 11 18.54 24 1-104666-0
8			16.36 8.89 7 13.46 16 104666-9
7/10		OBsolete	49.38 41.91 33 46.48 68 104666-8
7			44.30 36.83 29 41.40 60 104666-7
7			69.70 62.23 49 66.80 100 104666-6
7			57.00 49.53 39 54.10 80 104666-5
7			37.95 30.48 24 35.05 50 104666-4
7			31.60 24.13 19 28.70 40 104666-3
7			25.25 17.78 14 22.35 30 104666-2
7			18.90 11.43 9 16.00 20 104666-1
		G C B A	NO OF POSN PART NUMBER



BASIC DIMENSIONS FOR EVEN NUMBER OF SPACES (SEE TABLE)



BASIC DIMENSIONS FOR ODD NUMBER OF SPACES (SEE TABLE)

THIS DRAWING IS A CONTROLLED DOCUMENT

TE Connectivity

HEADER ASSY, VERTICAL SHROUDED DOUBLE ROW W/SIDE & END LATCHES AMP/MCU SYSTEM 50

108-1093

114-25031

100779-104666

4:1 1 # 1