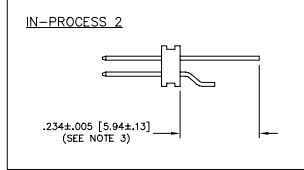
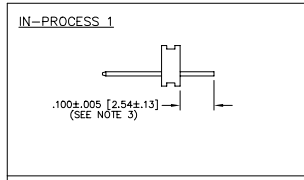
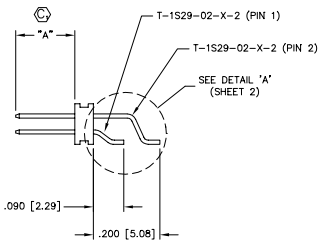
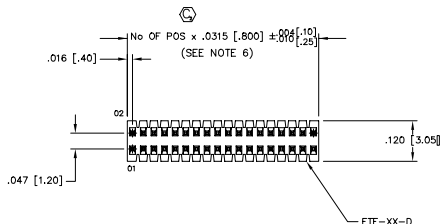
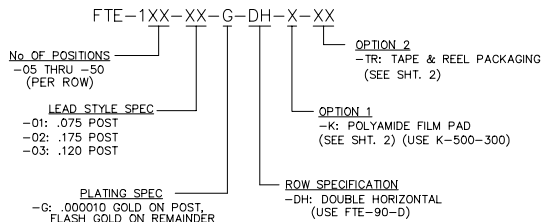
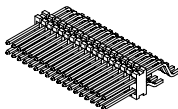


REVISION Q

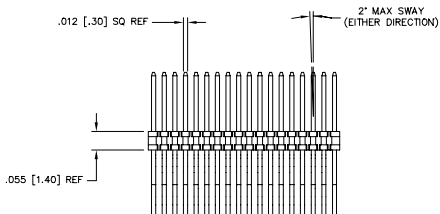
DO NOT SCALE FROM THIS PRINT

DIMENSIONS ARE IN INCHES UNLESS OTHERWISE NOTED		TOLERANCES ARE:	TITLE: .8MM x 1.2MM C.L. TERMINAL STRIP ASSM	DWG NO: FTE-1XX-XX-G-DH-X-XX
ONE PLACE DECIMALS ±.1[2.5]	THREE PLACE DECIMALS ±.005[.13]	ANGLES ± 2°		SHEET 1 OF 2
TWO PLACE DECIMALS ±.01[.3]	FOUR PLACE DECIMALS ±.002[.051]			

- NOTES:
1. MINIMUM PUSHOUT FORCE: 5 LB.
 2. SHEAR TAILS TO DIMENSION SHOWN, .003 [.08] MAX BURR.
 3. .015 [.38] MAX CUT FLASH; NO FLASH ALLOWED IN OR AROUND SURFACE MOUNT TAIL AREA.
 4. Ⓢ REPRESENTS A CRITICAL DIMENSION.
 5. ENDWALL THICKNESS TO BE .008 [.20] MIN.



LEAD STYLE	"A"	TERMINAL
-01	.075 [1.91]	T-1S29-02-X-2
-02	.175 [4.45]	T-1S29-02-X-2
-03	.120 [3.05]	T-1S29-02-X-2



MATERIAL:
 BODY: LCP
 COLOR: BLACK
 TERMINAL: PHOS BRONZE

MAX BOW ALLOWED TOP TO BOTTOM OR SIDE TO SIDE: .002 [.05] MAX.

PLOT SCALE: .225/ DIMSCALE .150

EXSPROD/ASSEMBLY/PONTBHM
 FTE/HASH

samtec

520 PARK EAST BLVD, NEW ALBANY, INDIANA 47150
 PHONE (812) 944-6733 P.O. BOX 1147
 CODE 55322

MADE BY: D PURWS 10/13/98

FTE-1XX-XX-G-DH-X-XX
 SHEET 1 OF 2

PROPRIETARY NOTE
 THIS DOCUMENT CONTAINS INFORMATION THAT IS UNCLASSIFIED AND NOT BE REPRODUCED OR TRANSMITTED IN ANY FORM OR BY ANY MEANS, ELECTRONIC OR MECHANICAL, INCLUDING PHOTOCOPYING, RECORDING, OR BY ANY INFORMATION STORAGE AND RETRIEVAL SYSTEM, WITHOUT PERMISSION IN WRITING FROM SAMTEC CORPORATION.