

Customer Information Sheet

DRAWING No.: M50-360XX42

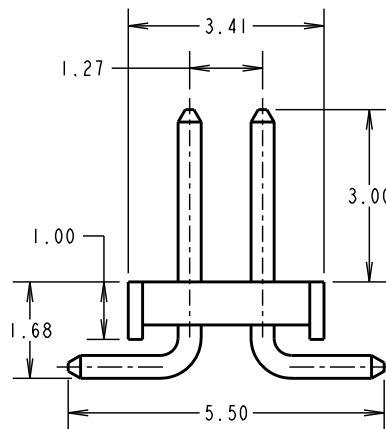
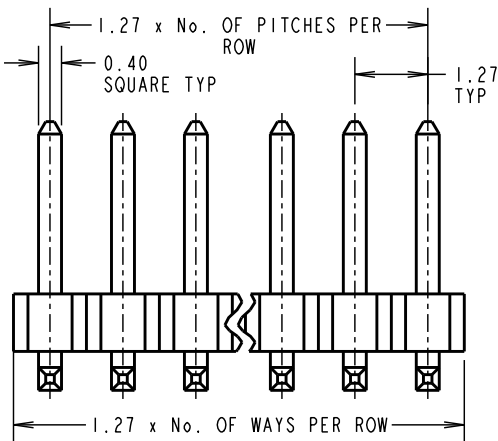
IF IN DOUBT - ASK

©

NOT TO SCALE

THIRD ANGLE PROJECTION

ALL DIMENSIONS IN mm



SPECIFICATIONS:

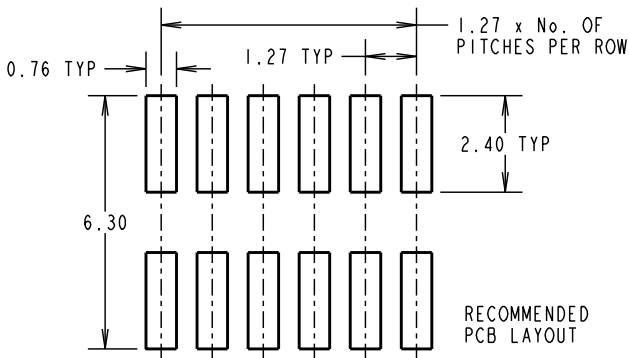
MATERIAL:
 MOULDING = HIGH TEMP THERMOPLASTIC UL94V-0
 CONTACTS = HIGH STRENGTH COPPER ALLOY
FINISH:
 CONTACTS = 0.02 - 0.08µ GOLD ON CONTACT AREA,
 2.5 - 3.8µ TIN ON TAILS

ELECTRICAL:
 CURRENT RATING (ALL CONTACTS ARE ELECTRICALLY LOADED) = 1A
 CONTACT RESISTANCE = 30mΩ MAX
 INSULATION RESISTANCE = 5000MΩ MIN
 DIELECTRIC WITHSTANDING = 600V AC MIN

MECHANICAL:
 PIN RETENTION = 4.4N NOMINAL
 SOLDERABILITY = 250°C FOR 3 TO 5 SECONDS
 DURABILITY = 600 CYCLES

ENVIRONMENTAL:
 TEMPERATURE RANGE = -40°C TO +105°C
PACKING:
 BAG

FOR COMPLETE SPECIFICATION, SEE COMPONENT SPECIFICATION C029XX (LATEST ISSUE)



ORDER CODE:

M50-360XX42

No. OF WAYS PER ROW: 01 TO 50
 FINISH: 42 = SELECTIVE GOLD + 100% TIN

SM	8	11.04.11	11217
NAME	ISS.	DATE	C/NOTE
APPROVED: S. MCCULLAGH			
CHECKED: R. ADDE			
DRAWN: J. KIER			
CUSTOMER REF.:			
ASSEMBLY DRG:			

NOTES:
 1. ALL TOLERANCES ARE ±0.25 UNLESS OTHERWISE STATED.

HARWIN

HARWIN USA
 TEL: 603 893 5376
 FAX: 603 893 5396
 mis@harwin.com

HARWIN Europe (UK)
 TEL: 023 9231 4545
 FAX: 023 9231 4590
 mis@harwin.co.uk

HARWIN Asia
 TEL: +65 6 779 4909
 FAX: +65 6 779 3868
 mis@harwin.com.sg

THIS DRAWING AND ANY INFORMATION OR DESCRIPTIVE MATTER SET OUT HEREON ARE CONFIDENTIAL AND COPYRIGHT PROPERTY OF THE HARWIN GROUP AND MUST NOT BE DISCLOSED, LOANED, COPIED OR USED FOR MANUFACTURING, TENDERING OR FOR ANY OTHER PURPOSE WITHOUT THEIR WRITTEN PERMISSION.

TOLERANCES
 X = ±1mm
 X.X = ±0.25mm
 X.XX = ±0.10mm
 X.XXX = ±0.01mm
 ANGLES = ±5°
 UNLESS STATED

MATERIAL:
 SEE ABOVE

FINISH:
 SEE ABOVE

S/AREA:
 mm²

TITLE:
 1.27mm PITCH DIL VERTICAL SMT PIN HEADER

DRAWING NUMBER:
M50-360XX42

SHT
 2 OF 2