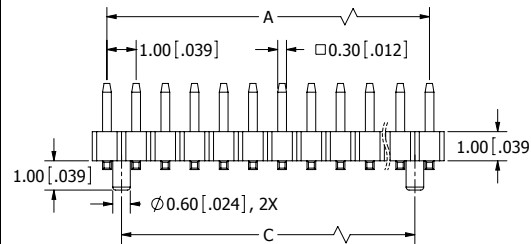
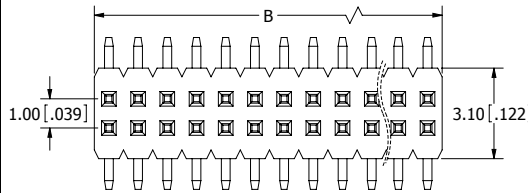
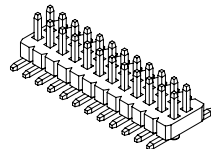


| POSITIONS/ CONTACTS | A | | B | | C | |
|------------------------|---------|--------------|---------|--------------|---------|--------------|
| | MM±0.20 | [INCH±0.008] | MM±0.30 | [INCH±0.012] | MM±0.20 | [INCH±0.008] |
| 02/04** | 1.00 | 0.039 | 2.00 | 0.079 | N/A | N/A |
| 03/06 | 2.00 | 0.079 | 3.00 | 0.118 | 1.00 | 0.039 |
| 04/08 | 3.00 | 0.118 | 4.00 | 0.157 | 2.00 | 0.079 |
| 05/10 | 4.00 | 0.157 | 5.00 | 0.197 | 3.00 | 0.118 |
| 06/12 | 5.00 | 0.197 | 6.00 | 0.236 | 4.00 | 0.157 |
| 07/14 | 6.00 | 0.236 | 7.00 | 0.276 | 5.00 | 0.197 |
| 08/16 | 7.00 | 0.276 | 8.00 | 0.315 | 6.00 | 0.236 |
| 09/18 | 8.00 | 0.315 | 9.00 | 0.354 | 7.00 | 0.276 |
| 10/20 | 9.00 | 0.354 | 10.00 | 0.394 | 8.00 | 0.315 |
| 11/22 | 10.00 | 0.394 | 11.00 | 0.433 | 9.00 | 0.354 |
| 12/24 | 11.00 | 0.433 | 12.00 | 0.472 | 10.00 | 0.394 |
| 13/26 | 12.00 | 0.472 | 13.00 | 0.512 | 11.00 | 0.433 |
| 14/28 | 13.00 | 0.512 | 14.00 | 0.551 | 12.00 | 0.472 |
| 15/30 | 14.00 | 0.551 | 15.00 | 0.591 | 13.00 | 0.512 |
| 16/32 | 15.00 | 0.591 | 16.00 | 0.630 | 14.00 | 0.551 |
| 17/34 | 16.00 | 0.630 | 17.00 | 0.669 | 15.00 | 0.591 |
| 18/36 | 17.00 | 0.669 | 18.00 | 0.709 | 16.00 | 0.630 |
| 19/38 | 18.00 | 0.709 | 19.00 | 0.748 | 17.00 | 0.669 |
| 20/40 | 19.00 | 0.748 | 20.00 | 0.787 | 18.00 | 0.709 |
| 21/42 | 20.00 | 0.787 | 21.00 | 0.827 | 19.00 | 0.748 |
| 22/44 | 21.00 | 0.827 | 22.00 | 0.866 | 20.00 | 0.787 |
| 23/46 | 22.00 | 0.866 | 23.00 | 0.906 | 21.00 | 0.827 |
| 24/48 | 23.00 | 0.906 | 24.00 | 0.945 | 22.00 | 0.866 |
| 25/50 | 24.00 | 0.945 | 25.00 | 0.984 | 23.00 | 0.906 |
| 26/52 | 25.00 | 0.984 | 26.00 | 1.024 | 24.00 | 0.945 |
| 27/54 | 26.00 | 1.024 | 27.00 | 1.063 | 25.00 | 0.984 |
| 28/56 | 27.00 | 1.063 | 28.00 | 1.102 | 26.00 | 1.024 |
| 29/58 | 28.00 | 1.102 | 29.00 | 1.142 | 27.00 | 1.063 |
| 30/60 | 29.00 | 1.142 | 30.00 | 1.181 | 28.00 | 1.102 |
| 31/62 | 30.00 | 1.181 | 31.00 | 1.220 | 29.00 | 1.142 |
| 32/64 | 31.00 | 1.220 | 32.00 | 1.260 | 30.00 | 1.181 |
| 33/66 | 32.00 | 1.260 | 33.00 | 1.299 | 31.00 | 1.220 |
| 34/68 | 33.00 | 1.299 | 34.00 | 1.339 | 32.00 | 1.260 |
| 35/70 | 34.00 | 1.339 | 35.00 | 1.378 | 33.00 | 1.299 |
| 36/72 | 35.00 | 1.378 | 36.00 | 1.417 | 34.00 | 1.339 |
| 37/74 | 36.00 | 1.417 | 37.00 | 1.457 | 35.00 | 1.378 |
| 38/76 | 37.00 | 1.457 | 38.00 | 1.496 | 36.00 | 1.417 |
| 39/78 | 38.00 | 1.496 | 39.00 | 1.535 | 37.00 | 1.457 |
| 40/80 | 39.00 | 1.535 | 40.00 | 1.575 | 38.00 | 1.496 |
| 41/82 | 40.00 | 1.575 | 41.00 | 1.614 | 39.00 | 1.535 |
| 42/84 | 41.00 | 1.614 | 42.00 | 1.654 | 40.00 | 1.575 |
| 43/86 | 42.00 | 1.654 | 43.00 | 1.693 | 41.00 | 1.614 |
| 44/88 | 43.00 | 1.693 | 44.00 | 1.732 | 42.00 | 1.654 |
| 45/90 | 44.00 | 1.732 | 45.00 | 1.772 | 43.00 | 1.693 |
| 46/92 | 45.00 | 1.772 | 46.00 | 1.811 | 44.00 | 1.732 |
| 47/94 | 46.00 | 1.811 | 47.00 | 1.850 | 45.00 | 1.772 |
| 48/96 | 47.00 | 1.850 | 48.00 | 1.890 | 46.00 | 1.811 |
| 49/98 | 48.00 | 1.890 | 49.00 | 1.929 | 47.00 | 1.850 |
| 50/100 | 49.00 | 1.929 | 50.00 | 1.969 | 48.00 | 1.890 |

**NOTE: POSITION 2 NOT AVAILABLE WITH GUIDE POSTS.

- NOTES:
1. INSULATOR MATERIAL: L.C.P, UL 94V-0, BLACK COLOR.
 2. CONTACT MATERIAL: PHOSPHOR BRONZE.
 3. CONTACT PLATING: SEE PART NUMBER CODING.
 4. CURRENT RATING: 1 AMP.
 5. INSULATOR RESISTANCE: 1000 MEGA OHMS MIN.
 6. CONTACT RESISTANCE: 20 MILLI OHMS MAX.
 7. DIELECTRIC WITHSTANDING: AC 300V.
 8. OPERATING TEMPERATURE: -40° C TO +125° C.
 9. PROCESSING TEMP.: 260° C FOR 10 SECS MAX.

(INDICATED TEMPERATURE AND TIME IS FOR COMPONENT INSULATOR. HIGHER PROCESSING TEMPERATURES MAY BE USED, PROVIDED HEAT IS APPLIED FROM BACK SIDE OF PCB, AND INSULATOR DOES NOT EXCEED INDICATED TEMPERATURE AND TIME.)

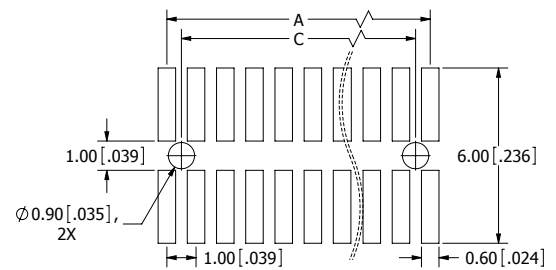
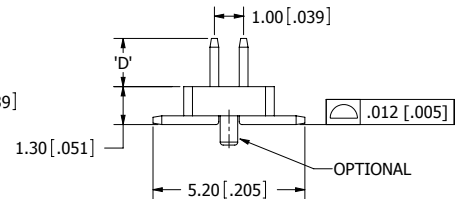


02-20, 0.20mm MAX.
21-50, 0.30mm MAX.

| REVISIONS | | | | |
|-----------|---------|-----------------|----------|----|
| REV. | ECO. NO | DESCRIPTION | DATE | BY |
| A | 1910 | INITIAL RELEASE | 2/5/2009 | JH |

PART NUMBER CODING
SMH10 -LP E-D -S -BK

- MOUNTING STYLES**
M = SURFACE MOUNT W/O GUIDE POSTS.
P = SURFACE MOUNT W/ GUIDE POSTS.
- NUMBER OF POSITIONS**
(CONTACTS PER ROW, 2 THRU 50)
- PLATING**
P = GOLD FLASH OVERALL.
S = 10µ" GOLD OVERALL.
- HEAD HEIGHT CODE**
1 - HEAD HEIGHT 'D' = 1.65 [.065]
2 - HEAD HEIGHT 'D' = 1.90 [.075]



RECOMMENDED PCB LAYOUT



RoHS COMPLIANT

UNLESS OTHERWISE SPECIFIED:
DIMENSIONS ARE IN MM(INCHES)
TOLERANCES:
ANGULAR: ± 5°
X = ± .30 [.012]
XX = ± .25 [.008]
XXX = ± .10 [.004]
SURFACE FINISH: 63 Rμ
REMOVE ALL BURRS AND SHARP EDGES .010 MAX

INTERPRET DIMENSIONS AND GEOMETRIC TOLERANCING PER: ANSI Y14.5M-1994

| DATE | NAME | SULLINS CONNECTOR SOLUTIONS |
|---|-----------------|--------------------------------|
| 2/05/09 | JH | |
| DRAWN: 2/05/09 JH | | |
| DESCRIPTION: HEADER, MALE 1mm CC, 2 ROWS, SMT | | |
| PART NUMBER: SMH10 -LP E-D -S -BK | | |
| SIZE: C | DWG. NO.: 11193 | REV: A |
| SCALE: 10:1 | SHEET 1 OF 1 | |