

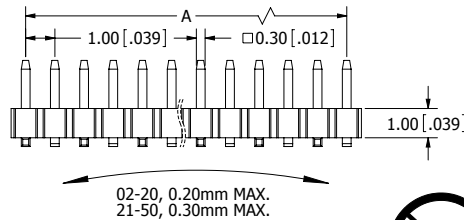
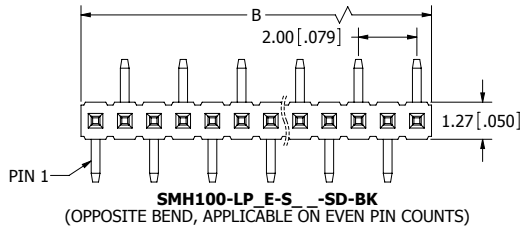
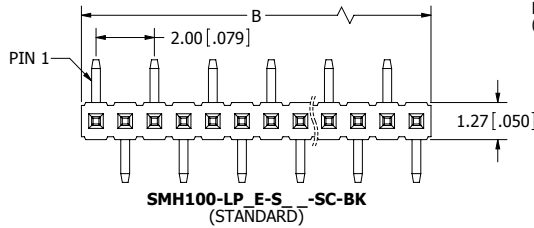
| POSITIONS/ CONTACTS | A | | B | |
|------------------------|---------|--------------|---------|--------------|
| | MM±0.20 | [INCH±0.008] | MM±0.30 | [INCH±0.012] |
| 02/02 | 1.00 | 0.039 | 2.00 | 0.079 |
| 03/03 | 2.00 | 0.079 | 3.00 | 0.118 |
| 04/04 | 3.00 | 0.118 | 4.00 | 0.157 |
| 05/05 | 4.00 | 0.157 | 5.00 | 0.197 |
| 06/06 | 5.00 | 0.197 | 6.00 | 0.236 |
| 07/07 | 6.00 | 0.236 | 7.00 | 0.276 |
| 08/08 | 7.00 | 0.276 | 8.00 | 0.315 |
| 09/09 | 8.00 | 0.315 | 9.00 | 0.354 |
| 10/10 | 9.00 | 0.354 | 10.00 | 0.394 |
| 11/11 | 10.00 | 0.394 | 11.00 | 0.433 |
| 12/12 | 11.00 | 0.433 | 12.00 | 0.472 |
| 13/13 | 12.00 | 0.472 | 13.00 | 0.512 |
| 14/14 | 13.00 | 0.512 | 14.00 | 0.551 |
| 15/15 | 14.00 | 0.551 | 15.00 | 0.591 |
| 16/16 | 15.00 | 0.591 | 16.00 | 0.630 |
| 17/17 | 16.00 | 0.630 | 17.00 | 0.669 |
| 18/18 | 17.00 | 0.669 | 18.00 | 0.709 |
| 19/19 | 18.00 | 0.709 | 19.00 | 0.748 |
| 20/20 | 19.00 | 0.748 | 20.00 | 0.787 |
| 21/21 | 20.00 | 0.787 | 21.00 | 0.827 |
| 22/22 | 21.00 | 0.827 | 22.00 | 0.866 |
| 23/23 | 22.00 | 0.866 | 23.00 | 0.906 |
| 24/24 | 23.00 | 0.906 | 24.00 | 0.945 |
| 25/25 | 24.00 | 0.945 | 25.00 | 0.984 |
| 26/26 | 25.00 | 0.984 | 26.00 | 1.024 |
| 27/27 | 26.00 | 1.024 | 27.00 | 1.063 |
| 28/28 | 27.00 | 1.063 | 28.00 | 1.102 |
| 29/29 | 28.00 | 1.102 | 29.00 | 1.142 |
| 30/30 | 29.00 | 1.142 | 30.00 | 1.181 |
| 31/31 | 30.00 | 1.181 | 31.00 | 1.220 |
| 32/32 | 31.00 | 1.220 | 32.00 | 1.260 |
| 33/33 | 32.00 | 1.260 | 33.00 | 1.299 |
| 34/34 | 33.00 | 1.299 | 34.00 | 1.339 |
| 35/35 | 34.00 | 1.339 | 35.00 | 1.378 |
| 36/36 | 35.00 | 1.378 | 36.00 | 1.417 |
| 37/37 | 36.00 | 1.417 | 37.00 | 1.457 |
| 38/38 | 37.00 | 1.457 | 38.00 | 1.496 |
| 39/39 | 38.00 | 1.496 | 39.00 | 1.535 |
| 40/40 | 39.00 | 1.535 | 40.00 | 1.575 |
| 41/41 | 40.00 | 1.575 | 41.00 | 1.614 |
| 42/42 | 41.00 | 1.614 | 42.00 | 1.654 |
| 43/43 | 42.00 | 1.654 | 43.00 | 1.693 |
| 44/44 | 43.00 | 1.693 | 44.00 | 1.732 |
| 45/45 | 44.00 | 1.732 | 45.00 | 1.772 |
| 46/46 | 45.00 | 1.772 | 46.00 | 1.811 |
| 47/47 | 46.00 | 1.811 | 47.00 | 1.850 |
| 48/48 | 47.00 | 1.850 | 48.00 | 1.890 |
| 49/49 | 48.00 | 1.890 | 49.00 | 1.929 |
| 50/50 | 49.00 | 1.929 | 50.00 | 1.969 |

PART NUMBER CODING
SMH100-LP_E-S_-S_-BK

MOUNTING STYLES
C - SURFACE MOUNT, SINGLE ROW
PIN 1 (STANDARD)
D - SURFACE MOUNT, SINGLE ROW
PIN 1 (OPPOSITE BEND)

NUMBER OF POSITIONS
(CONTACTS PER ROW, 2 THRU 50)

PLATING
P = GOLD FLASH OVERALL.
S = 10u" GOLD OVERALL.

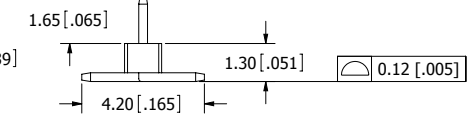
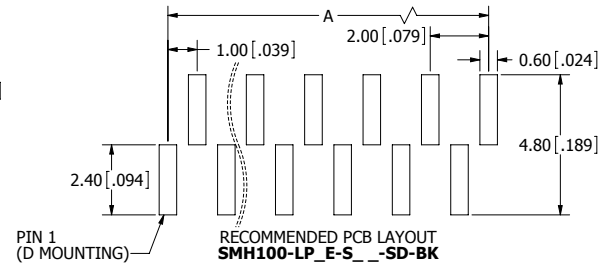
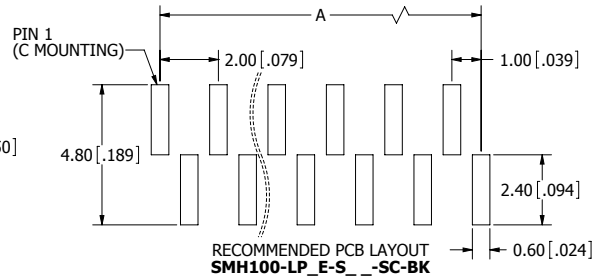
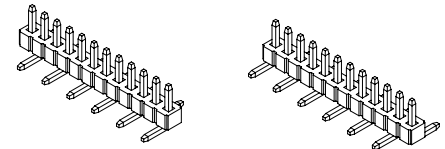


- NOTES:**
1. INSULATOR MATERIAL: L.C.P., UL 94V-0, BLACK COLOR.
2. CONTACT MATERIAL: PHOSPHOR BRONZE.
3. CONTACT PLATING: SEE PART NUMBER CODING.
4. CURRENT RATING: 1 AMP.
5. INSULATOR RESISTANCE: 1000 MEGA OHMS MIN.
6. CONTACT RESISTANCE: 20 MILLI OHMS MAX.
7. DIELECTRIC WITHSTANDING: AC 300V.
8. OPERATING TEMPERATURE: -40° C TO +125° C.
9. PROCESSING TEMP.: 260° C FOR 10 SECS MAX.
(INDICATED TEMPERATURE AND TIME IS FOR COMPONENT INSULATOR. HIGHER PROCESSING TEMPERATURES MAY BE USED, PROVIDED HEAT IS APPLIED FROM BACK SIDE OF PCB, AND INSULATOR DOES NOT EXCEED INDICATED TEMPERATURE AND TIME.)



RoHS COMPLIANT

| REVISIONS | | | | |
|-----------|---------|-----------------|----------|----|
| REV. | ECO. NO | DESCRIPTION | DATE | BY |
| A | 1910 | INITIAL RELEASE | 2/5/2009 | JH |



UNLESS OTHERWISE SPECIFIED:
DIMENSIONS ARE IN MM(INCHES)
TOLERANCES:
ANGULAR: ± 5°
X = ± .30 [.012]
Y = ± .25 [.009]
Z = ± .10 [.004]
SURFACE FINISH: 63 R_a
REMOVE ALL BURRS AND SHARP EDGES .010 MAX

INTERPRET DIMENSIONS AND GEOMETRIC TOLERANCING PER: ANSI Y14.5M-1994

| DATE | NAME |
|---------|------|
| 2/05/09 | JH |

DESCRIPTION: HEADER, MALE 1mm CC, 1 ROW, SMT

PART NUMBER: SMH100-LP_E-S_-S_-BK

SIZE: C DWG. NO. 11190 REV A

SCALE: 1:1 SHEET 1 OF 1

SULLINS
CONNECTOR SOLUTIONS